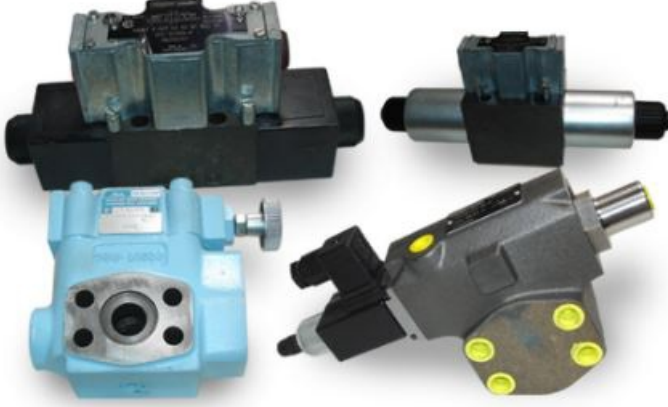


Denison Hydraulics

Garanti: 12 ay

Bu ¼r¼ne ait T¼rkiye ii kapı teslim fiyat ve teslim s¼resi ieren teklifimizi almak iin info@yursat.com.tr e-posta adresine baŐvuru yapabilir ya da ayrıntılı bilgi iin +90 224 240 03 04 numaralı telefonumuzdan bizlere ulaŐabilirsiniz. **Denison Hydraulics** Markası, tedarik s¼resi iin l¼tfen bizimle iletiŐime geiniz.

Firmamız Denison Hydraulics T¼rkiye Distrib¼t¼r¼ veya temsilcisi deĐildir. Firmamız sipariŐ durumunda, belirtilen ¼r¼nlerde sadece Orjinal ve yeni ¼r¼n teklifi sunmaktadır. Bu sitede g¼sterilen ¼zel marka adları ve ticari markalar ilgili sahiplerinin m¼lkiyetindedir, talep durumunda kaldırılmaktadır.



¼r¼n	Aıklama
D1VW004CNJW9*	DIRECTIONAL VALVE, DIRECT; NG6 NBR; 4/3; DEFAULT; 24 VDC; EN 175301-803
PV20 ZR1DC00 HYDROLIC PUMP	
2F1C-0301B5C	FLOW CONTROL VALVE 026-46329-5
DENİSON MODEL: P7W-1R1A-L00-00	nr. 75106 PUMP- VARIABLE VOLUME
R4V06-535109W30A5	PRESSURE RELIEF VALVE
INGERSOLL RAND, DM25TH, 56988926-2658573291	
2F1C03 01 B 5 C	FLOW CONTROL VALVE WITH RV (026-46329-5)
024-44185-0	T6CM B17 3L00 C1 VANE PUMP
02980068-0	
PV202R1EF00	Denison Hydraulics Axial Piston Pump Model: PV202R1EF00 3600 PSI Max rotation CW 1000 PSI G24E884 S/N Working environment of pumps: Environment: Dirty Dusty Temperature: -10,+60 Electric Motor Information: Mez Frenstat TYP: KC200LK04 IP:54 IM :1001 No:9690570 90 kW, 50 Hz 380/660 V, 57/32.5 A Cos φ 0.88, 1465 min-1 ISOL F 0896, CSN 950000 M/-30oC
PV202R1CF02 N2	
T6CC B25 B14 1R00 C100	DOUBLE VANE PUMP 024-40144-000
T6CC B31 B03 5R00 C100	DOUBLE VANE PUMP SPLIT SHAFT, Z=13

T37CB 031B03 1R00 A1M1	
C4V06-5982B5	UNLOCKABLE NON-RETURN VALVE 350 BAR; NG25
T7DBS B42 B14 1R00 A100	DOUBLE VANE PUMP
Model No: P7V2R1A9A2B00	
Model No: PV07-020-51R-0010	
Model No: PV08-035-51Y-050-V371	
P6W2R1BC1000	
P7W-1R1A-LOO-OO REEDRILL	NO: 75106 MAIN PUMP
4d01-35-208-03-02-00a1-w57321	
016 85843	
026 21088	
P7P3L5A2A2B00M287191	DENISON-PUMPE 023-87191-5
PV080R1K1T1NMMC4747	AXIAL PISTON PUMP; ADJUSTABLE NBR; CLOCKWISE. ; Pn. 350 BAR 80cc/rev ; N.MAX. 2500 RPM standard pressure regulator; standard design with integrated pressure pilot valve
1200 THESIS.>T7EES 085 FRONT (LOW PRESSURE)	
T6C031 PUMP CODE:T6EDC052-045-031 or T6C-B31	
PUMP CARTRIDGE (IP 1650)>T6D045 or T6DB45	(DENISSON PUMP CODE: T6EDC 052-045-031 1R43A1F0
FT30 934594 24 G	
MRE800F-F1N1N1S1NX1000/65570	265570 MOTOR CALZONI MR RADIAL PISTON
W 01 311 W D1 1 AD	
W 01 321 W D1 1 AD	
R4 V 06 G 005 10 11 A1	
VALF R4V0 6G 0051011WA1526471020	
T6EDY 062 038 1L00 B1	PUMP PARKER T6EDY VANE DOUBLE
D1VW020BNJW	D1VW020BNJW91 VALVE PARKER D1VW DIR CONTROL
029-09852-0	PV6 2R10 C00 J343
024-63665-5	T6DM R35 3R01 C5 PUMP PARKER T6DM VANE SINGLE
PUMP BLOCK,11/2"-SAE61 MIT R4U K1 6023580	

PUMP BLOCK,11/4"-SAE61 MIT R4U,K1 6023590	
054-53270-0	T6CC B17 B03 1R00 C100 PUMP PARKER T6CC VANE DOUBLE
029-83580-0 PV20 2R1E F00	PARKER HYD PUMP AXIAL PISTON
029-83580-0 PV20 2R1E F00	PARKER HYD PUMP AXIAL PISTON
024-25703-0	T6CC 025 008 1R00 C100 PUMP PARKER T6CC VANE DOUBLE
23290-051999	
Pump	Features of Available Pumps 3600 PSI Max Rotation C.W. 1000 PSI G24E884 S/N Working Environment of Pumps Dirty Dusty, -10,+60C Electric Motor Information Mez Frenstat IP:54, IM:1001 90kW, 50Hz 380/660V, 57/32.5A Cos 0.88, 1465 min ISOL F 0896, CSN 950000 M/-30C
098-91037-0	ZDV-A025S0D1 VALVE PARKER ZRD THROTT. CHECK
P14P3L1C8A2-B03	
015-12478	
024-50670-0	T6C B31 1R00 B1 PUMP PARKER T6C VANE SINGLE
PV080R1K1T1NMMC	PV080R1K1T1NMMC4747 PUMP PARKER PV+ AXIAL PISTON
MF-08-113-51N 170 LPM	
098-91213-0	ZDR-AR01-5-S0-D1 VALVE PARKER ZDR SANDWICH
T7BS B06 1R02 A101	024-50456-0 PUMP PARKER T7BS VANE SINGLE
D3W003KNKW	D3W001CNTW42 VALVE PARKER D3W DIR CONTROL
PV10 2R1E C02	029-83466-0 PARKER HYD PUMP AXIAL PISTON
ZDRP011S0D1	
016-81053-0	R4V10-5D510A125 VALVE PARKER R4V PRESS RELIEF
T6CY 020 1R00 B1	PUMP PARKER T6CY VANE SINGLE
S24-10219-0	KIT T6ED SEAL S1 DENISON SPARE KIT F/HYD PUMP
T6CCM B08 B03 1R00 D110	054-38066-0 PUMP PARKER T6CCM VANE DOUBLE
SEAL KIT for pump	PVT64-2R1C-L03-S
PVT64-2R1C-L03-S	Pump complete
D1VW020BNJW91	D1VW020BNJW VALVE PARKER D1VW DIR CONTROL
700890	
1330-13	
	026-54113-H Replaced by D1VW020BNJW D1VW020BNJW91

D1VW020BNJW	DIRECTIONAL CONTROL VALVE
R4S03-56332A110	016-95666-0 VALVE PARKER R4S PRESS RELIEF
S20-14087-0	900 DRIVER PANEL MOUNT
701-00158-8	AN227 MODULE
524108440	CARTRIDGE
T7eec	Please look at the attachement
R5v085111209w01a	VALVE HYD FLOW CONTROL
4vp0152g12b1c1	FLOW CONTROL
701-00600-8	DRIVER 12VDC 2.5 A VP01-B
P120311cl1000	MOTOR
701-00601-8	DRIVER 24 VDC VP01
T6c0142r03b1	MOTOR
024-44817-0	T6ECM 066 B17 2R00 C1
T6edm072b503looc	PUMP
701-00615-8	DRIVER 24V
T6c B10 1r00 B1	SIEHE ANHANG
701-00054-8	
P6v2r5c102b	HYDRAULIC PUMP P6 SERIES
T6cmn-B17-Br00-0100	SINGLE VANE PUMP
701-00007-8	
S20-11716	JUPITER OPTIONS CARD
054450330	PUMP
M11h3n1a2a0b	MOTOR VARIABLE DISPLACEMENT HYDRAULIC
T7es 066 1r** A1m0	VANE PUMP 024-90861-002 Tariff No. = 8413608090 Country of origin = France
023-03670-5	HYDRAULIC PUMP P6 SERIES
T6cmb251l00c1	MOTOR
Vp01300qa1	VALVE,REGULATING,SYSTEM PRESSURE