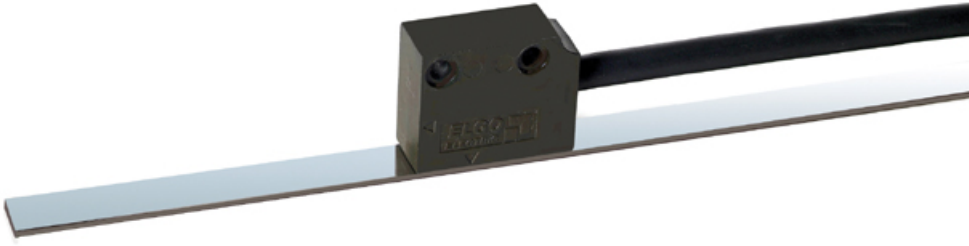


Elgo

Garanti: 12 ay
Bu ¼r¼ne ait T¼rkiye i¼i kapı teslim fiyat ve teslim s¼resi i¼eren teklifimizi almak i¼in **info@yursat.com.tr** e-posta adresine baŐvuru yapabilir ya da ayrıntılı bilgi i¼in +90 224 240 03 04 numaralı telefonumuzdan bizlere ulaŐabilirsiniz.
Elgo Markası, tedarik s¼resi i¼in l¼tfen bizimle iletiŐime ge¼iniz.

Firmamız Elgo T¼rkiye Distrib¼t¼r¼ veya temsilcisi deĐildir. Firmamız sipariŐ durumunda, belirtilen ¼r¼nlerde sadece Orjinal ve yeni ¼r¼n teklifi sunmaktadır. Bu sitede g¼sterilen ¼zel marka adları ve ticari markalar ilgili sahiplerinin m¼lkiyetindedir, talep durumunda kaldırılmaktadır.



¼r¼n	A¼ıklama
Emix2-000-04.0-2-00	733290035 Magnetic length measuring system
Mb20 20 10 1 R	Magnetband for EMIX
P8822-007-024-00-R	Zweiachsige Positionsregelung 24VDC
P9511-000-024-0	Axis compact control without program memory with relay outputs 000 = standard version 024 = supply24VDC 0 = signal input A / B24V
15-42-1000	Rotary pulse encoder 1000 = 1000 pulses / revolution Supply: 10-30 VDC Outputs: A, B HTL with the cable gland Weight: 1.0 kg Customs tariff number: 9031499000 Country of manufacture: CZ
P9511-000-024-0	1-axis compact control without program memory with relay outputs 000 = standard version 024 = supply24VDC 0 = signal input A / B24V
EMIX2-000-04.0-2-00	Magnetic length measuring system Sensor and evaluation electronics in the sensor housing 000 = standard version 04.0 = cable length 4.0m 2 = resolution 0.01mm 00 = supply / level 10-30VDC / 10-30VHTL
MB20-20-10-1-R	Magnetic tape for EMIX

IZ15 Mode/l sensor Ms250	
LMIX2-032-02.0-1-01	Magnetic length measuring system 032 = special version (with 2k encapsulation, protective diode, shield is not on the housing, PWM error output) 02.0 = cable length 8.0 m 1 = resolution 0.1 mm 01 = supply / level 10-30 VDC / 5V TTL RS422
LIMAX2-00-030-62N5-SSG0-D9M1	Absolute length measurement system forLiftengs 00=Standardversion 030=cable length 3.0 m 62N5=resolution 62.5 µm SSG0 = SSI - interface (25 - Bit Graycode) D9M1 = 9 - pole . D - S U B - S t e c k e r / Rifle
AB20-80-10-1-R-D-15-BK80	LIMAXMagnetband(NULLinside)
LIMAX2MWSET	Mounting bracket for LIMAX2
555100040	Montageset LIMAXRMS
IZ16E SENSOR	
MB20-50-10-1R 636 MM	
MB20-25-10-1R 636 MM	
2000306N5SSG0GD9M1 / HW:02.1/SW:3.5	
0030050-4SSI-UGXV IP55	HW :003/SW :2.4
Floor Magnetic Reader plastic	
MA06LS	
FMAX-00-005-0010-SSB0-U	Guided sensor head for Guide railFSMAB 00=default version 005=cable length 0.5m 0010=resolution0.01mm SSG0=SSI interface U=unguided version
FSMAB-000-0500	guide rail incl. Magnetic tape for FMAX series (max. measuring length 650mm) 000=default version 0500=total length 500mm (total length=measuring length+150mm)
P8721	
IZ16E-043-1-0.30-0	761161046 Incr. position display With external sensor, battery operated 7-digit LCD display, digit height 14mm 043=for FOW/FLW 1=integrated battery compartment (1xC) with cover 0.30=cable length 0.3m 0=fixed cable outlet
MB20-25-10-1-R	Magnetband for IZ16E
LMIX2-000-10.0-1-01	Magnetisches Längenmesssystem Sensor und Auswerteelektronik im Sensorgehäuse 000 = Standardversion 10.0 = Kabellänge 10,0 m 1 = Auflösung 0,1 mm 01 = Versorgung / Pegel 10 - 30 VDC / 5V TTL
LMIX2-000-08.0-1-00	Magnetic length measuring system Sensor and evaluation electronics in the sensor housing 000 = standard version 08.0 = cable length 8.0 m 1 = resolution 0.1 mm 00 = supply

	/ level 10-30VDC/10-30VHTL
EMIX2-000-0.50-2-01	Magnetic length measuring system 000=Standard version 0.50=cable length 0.5 m 2= resolution 0.01 mm 01=Perspilon/level 10-30 V DC / 5 V TTL
MB20-20-10-1-R	Magnetband for EMIX
FMAX-00-005-0010-SSB0-U	Guided Sensor for FSMAB 00 = Standard version 005 = Kabel length 0.5 m 0010 = resolution 0.01 mm SSB0 = SI - interface (25 Bit Binary Code) U=undred
FSMAB-000-0500	GUIDE RAILS INCL. Magnet- band for FMAX 0500 = length 500 mm Measurement length 350 mm TOTAL LENGTH = MEASUREMENT LENGTH + 150 mm
P9521	
P8822	13 cm x 13 cm with a depth of 8 cm
EMIX2-000-10.0-2-00	EMIX2-000-10.0-2-00 Magnetic Linear Encoder Magnetic length measuring system Sensor and evaluation electronics in the sensor housing 000 = standard version 10.0 = cable length 10.0 m 2 = resolution 0.01mm 00 = supply / level 10 - 30 VDC / 10 - 30 VHTL
MAN.DG244 EMAX-016-00.4-2-422-0-2	
LIMAX2-09-040-0500-CO1TG	
LIMAX3CP-00-050-1000-CO1TG-0 ID-X/125k/0/1.	
732000110	MS2060 - 08.0 Magnetsensor for Z60 - 014
P9521	
HW 02.2/SW 3.5.1	
Z50-054-024-0	7 0 1 5 0 0 1 0 5 1-axis position display with 1.4 mm high 7-piece. LCD display incl. RS232 - Selection with Mini - USB - CONNECTION 054 = Replacement for Z54024 = Supply 24 V DC 0 = Signaling A / B 24 V
20100831	
SENSOR MAN.DG244 EMAX-016-00.4-2-422-0-	
SENSOR MAN.DG244 EMAX-016-00.4-2-422-0	
733290012	EMIX 2 - 0 0 0 - 1 0 . 0 - 2 - 0 0 Magnetic length measuring system 0 0 0 = Standard 1 0 . 0 = cable length 1 0 m 2 = 0 , 0 1 mm at 4 times Edge evaluation 0 0 = 1 0 - 3 0 VDC / 1 0 - 3 0 VHTL
IZ16E	SENSOR
MB20-25-10-1R	636 MM

EMAX00003010CA0500K0R5 M0	
MB20-50-10-1-R	731000002 Magnetic tape for LMIX series
P8721-000-024-0- P	
Az16e3013	
E Mix3-000-01.0-2-11	
Model Lmix2 Code 039.01.01.01	
Z16-042-001-1.0	
Emix2-000-01.5-2-11	
Z-20e	
5-37-0050-02,0	
See The Attached Files	
Azs-000-1-03.0-1	
Z89-000-024-4	
P9521-005-024-0 -	
99521-000-024-V	
Lmix2-032-02.0-1-00	
56.500.024	
799999999, Emax0015001042009k6	
Mix2-039-03 0-10j	
799999999, Ema10015001042009k6	
15 - 32 - 0250 - 20.0-S	
Z60-000-024-111	
Emix2-000-02.0-2-00 (73329006)	
Mix1-000-01.0-1-11	
Spare Parts Plexiglass For Fluorescent Lamps Owf-2x36-003	
711p88001 P8822-000-230-00-R-En	
L M I X 3 - 0 0 5 - 0 . 3 0 - 1 - 0 0	
733290011	
71p/110v Ac - P8511-000-115-0-R-En (711p8504)	

Kt-E-B-0124 00
701166005
701hw0001 Hd 15 - 000 - 001
Z16-000-001-0-5 New Iz16-000-1- 01, 0-0
810508
Gmix1a-000-01.5-1-00
I Z 1 5 E - 0 3 1 - 3 - 0 0 , 5 - 0
Gmix2-000-06.0 24vdc
Mb 20.2 5
54.500.024 Obsolete By Z50-054-024-0 (701500105)
I Z 1 6 E - 0 0 0 - 1 - 0 2 , 0 - 0
P8511-000-115-0-R-En (711p8504)
733210007, Mix3-000-0000-1-00
Lmix1 - 010 - 10.0-1 -11
5-0090-000200
56.500.024sn173 Ng20 729395- 19.12.2002 Sv018 V1-0.
Ms20.25
Mix3-000-3-00
Z59 X0x
Z16-032-001-N - , No
Emix23-000-30.0-0001-01-L
Z15
P9521-002-024-02
Emax00015010a2038k 4 0 - - - - A - - - -
7310031002
Counter 220 Vac
71.P.Sn002
Model: Z-16

85 P Sp370	
P/N: 733240040 Type: Emix3-000-05.0-2-11	
Lmix 22-000-03.0-0100-00	
Z89-000-024-00x	
15-32-0250-03.0	
65699967	
733280145 Lmix2-000-08.0-1-11	
Mix3-000-0000-5-11	
P 2288	
P 9 5 2 1 - 0 0 0 - 0 2 4 - 0	
733280145 , Type Lmix 2 000 08 0111	
Mb20-20-10-1-R (73100015)	
Iz15e-001-4-01,0-0	
004 0194 124	
Z16-028-001-0,6-E Art.Nr.:701160030 : By: Iz16e-000-1-00,6-0-Cap	
86910902/S	
7621 0101	
7 0 1 5 8 6 0 0 2	
70064660980	
Elgo P8822	(DC Supply-P8822-013-024-00-R-EN-80074590560)
2688	
Lmix2-000-008.0-1-00	
810514	
P8822 24 Dc	
Az17e-600-3-Xx.X-1	
Z 5 8 - 6 0 0 - 0 2 4 - 1	
Lmix3-000-08.0-1-00-V	
Emix2-000-10.0-2-11 0987586	
Z60-000-024-111	3-axis position indicator Digit height 7mm 0 0 0 = Standard version 0 2 4 = 2 4 V DC supply 1 1 1 = Signaling gang A / B / Z Perspilon t / level 1 0 - 3 0 V DC / 1

0 - 3 0 V H T L ATTENTION: C o n n o c t i o n o f a x e 3 only
via D - S U B - P e c k e r ! Replacement for Z89-000-024-000

[P8511-003-024-0-R](#)

[P/N: P9511-000-230-M](#)

[Lmix2 P/N: Tp93 ? 6716 ? 671607125 ?
C](#)

[Cpu 235](#)

[M S 2 0 6 0 - 0 2 . 0](#)

[Iz16e-000-1-00,6-0-Cap](#)

[Iz16e -000 -1-00,2-0 701166004](#)

[Mb 20.50](#)

[Please See The Attached Pictures..](#)

[Emax-029-01.5-7-A22-2](#)

[Mb20. 20](#)

[733280145](#)

[799999999](#)

[P 9 5 2 1 - 0 0 0 - 0 2 4 - 0 \(7 1 1 9 5 2
0 0 6 \) 1 - A C H S K O M P A K T S T E U
E R U N G 0 0 0 = S T A N D A R D V E R
S I O N 0 2 4 = V E R S O R G U N G 2 4
V D C 0 = S I G N A L E I N G A N G A /
B 2 4 V](#)

[Iz16e-000-8-03.6-1-Ag-Cap](#)

[Type 15.62](#)

[P8721-000-115-0-En](#)

[Gmix1a-000-3.0](#)

[Ab20-40-10-1-R-11](#)

[733250022](#)

[Wdr Ds 01019217](#)

[Z50-54-024 - 0](#)

[7480](#)

[Lmix1](#)

[Lmix2 - 047 - 03.0 - 1 - 01](#)

Magnetic length measuring system Sensor and evaluation
electronics in the sensor housing 047 = special version 03.0
= cable length 3.0m 1 = resolution 0.1 mm 01 = supply /
level 10-30VDC / 5V TTL

Typ71	
Z16-034-001-3.3-Ag , Iz16e-000-8-03.6-1-Ag-Cap	
7 0 1 5 0 0 1 0 5	
Elg02688	
Type: 71.P , P8511-000-230-0-R-En	
Type: 87p2	
Emix2-000-10.0-2-11	
Lmix1-000-01.0-1-11	
Lmix2-000-08.0-1-11	
Lmix M820-50-10-1-R	
15-32-0250-02.0 715320052	
15-62-0250-01.5	
1024 P Encoder 24 V Dc	
731031003, Mb Endkappe 20mm	
Cable For 56.500.024.Sn173.Ng20	
50.610.60.20 Iw 4 , By 705570013	
Emax2-00-015-F10-420-19k2	
Lmix2 -000-08.0-1-00 1983719	
Mb Endkappe10 Mm / Set	
Type 453	
Ma06ls	
Mb20-20-10-1- R	
LIMAX2-00-030-62N5-SSG0-D9	743002003 Absolute length measuring system for lift systems 00=standard version 030=cable length 3.0m 62N5=resolution 62.5µm SSG0=SSI interface (25-bit gray code) D9M1=9-pin D-SUB plug/socket
Plastic Lids For Tips,For Fluorescent Lamps Owf-2x36-003	
A Z 1 6 E - 0 0 0 - 1 - X . X X - 1 (7 6 2 1 6 0 1 0 1)	
Lmix2-047-03.0-1-01	
Z 2 5 - 0 0 0 - 0 2 4 - 0	

[Z16-Sn000-001-0,2-0 , By Iz16e -000 -
1-00,2-0 701166004](#)

[Mix3-000-0000-2-11](#)

[99521-000-024-V \(720303-17.12.2001 ?
Sv001 V3-3\)](#)

[Type: Z-59e](#)

[201-M-Pnp](#)

[P8511-000-230-0-R-En](#)

[701560001](#)

[733260022](#)

[Ms16.](#)

[P8822-000-024-00](#)

[Lmix1-000-03.0-1-00 733250022](#)

[731000274, Ab20-50-20-2-R-12](#)

[705570013](#)

[Emix2-000-02.0-2.00](#)

[P 40](#)

[Z89-000-024-99x](#)

[A B 2 0 - 4 0 - 1 0 - 1 - R - 1 1 \(7 3 1 0
0 0 0 7 4\)](#)

[Mb 20-25-10-R For Z15](#)

[Lmix2-000-0.50-1-00-D2](#)

[I Z 1 6 E - 0 0 0 - 1 - 0 0 , 5 - 0](#)

[M I X 1 - 0 0 9 - 0 3 . 0 - 1 - 0 1](#)

[Z59 000](#)

[Az16 \(*\)](#)

[Kt-E-B-0194-00](#)

[Iz16e-00-1 -00 , 5 - 0](#)

[Mix 3 - 000 - 0000 - 2 - 00](#)

[A Z 1 6 E - 0 0 0 - 1 - X . X X - 1 \(2 G \)](#)

[731000110, Emab](#)

[80-B2](#)

[P8822 220 Ac](#)

[Eqc- M1- 1428315](#)