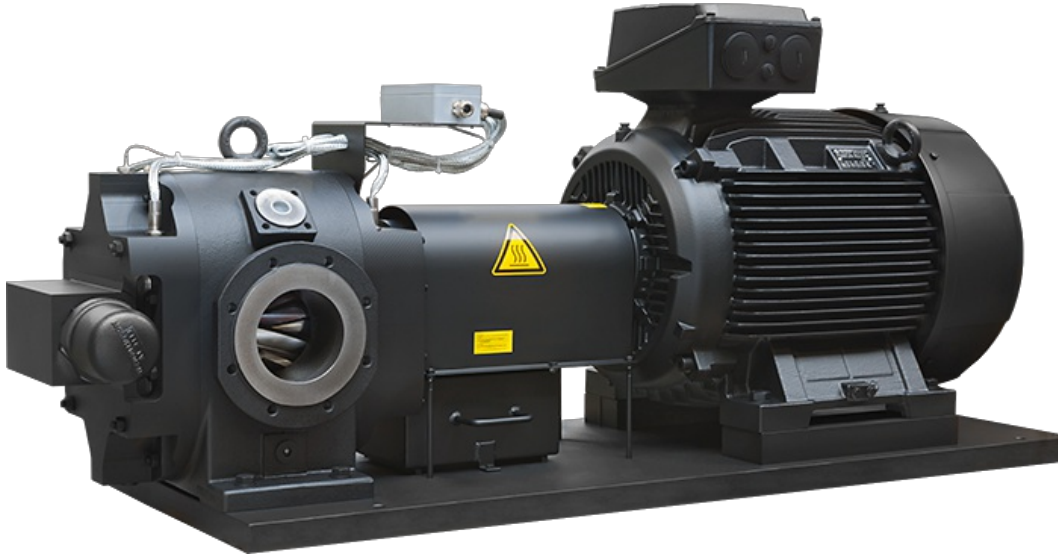


## Gebr Steimel GmbH

Garanti: 12 ay  
Bu rne ait Trkiye ii kapı teslim fiyat ve teslim sresi ieren teklifimizi almak iin [info@yursat.com.tr](mailto:info@yursat.com.tr) e-posta adresine baŐvuru yapabilir ya da ayrıntılı bilgi iin +90 224 240 03 04 numaralı telefonumuzdan bizlere ulaŐabilirsiniz.  
**Gebr Steimel GmbH** Markası, tedarik sresi iin ltfen bizimle iletiŐime geiniz.

*Firmamız Gebr Steimel GmbH Trkiye Distribtr veya temsilcisi deĐildir. Firmamız sipariŐ durumunda, belirtilen rnlerde sadece Orjinal ve yeni rn teklifi sunmaktadır. Bu sitede gsterilen zel marka adları ve ticari markalar ilgili sahiplerinin mlkiyetindedir, talep durumunda kaldırılmaktadır.*



rn	Aıklama
<a href="#">Mzth-185-L</a>	
<a href="#">PSF6/132RD054242</a>	P-SF6/132RD-VLF, gear pump, 2-16 bar FKM, suitable for IEC 132, noise optimized
<a href="#">BZP052010RD--062R</a>	SF2/10RD, gear pump without motor NBR, 1-8 bar, G1 - SAE 1
<a href="#">BML2/24-H</a>	
<a href="#">ASF6-120GD152882R</a>	A-SF6/120GD-VLFM, pump unit, max. 31 bar 11.0 kW, 1000, 400/690V, 50Hz, IP55, F, B5, IE3, PTC
	P-SF4/112RD-VL Gear pump, 2-16 bar FKM, noise-optimized, suitable for engine IEC132, B5 or V1 Gear pump: SF 4/112 RD - VL Article no. : PSF4-112RD130700R Dimension sheet: DPA054D-132LM-R32 Spare parts list: DET054112RD - 165R Suction u. Pressure connection: SAE 2 Housing parts: EN-GJL-250 (GG-25) Waves: 16MnCrS5, egh. Gears, noise optimized. : EN-GJS-400-15

[Psf4-112rd130700r](#)

(GGG-40), ionitriert, helical toothed Storage: MD multilayer Shaft seal: Radial shaft seal Elastomers: FKM Fluid: Lubricating oil Viscosity: 50-5000 cSt Temperature: 10-60 ° C Flow rate: approx. 142 l / min. Pressure: 5 bar Speed: 1450 1 / min. Pressure relief valve Opening pressure: 8 bar Adjustment range: 2-16 bar Direction of rotation: right Test run: yes, with HLPD 46 Coupling: BKUA065-2438-301 Bellhousing: BLA054300168LA21 suitable for three-phase motor Motor size // design: IEC 132 // V 1 / B35 Painting: Primer HDO058-green Type plate: ETY924-D-E - PE01 Engine mounting screws: 4 pi

[5ap80 4s](#)

[5??80-4s 50 60](#)

[Asf4 63rd-121809r](#)

[Asf3 32rd-112158r](#)

[Bzp042-36r-0001u](#)