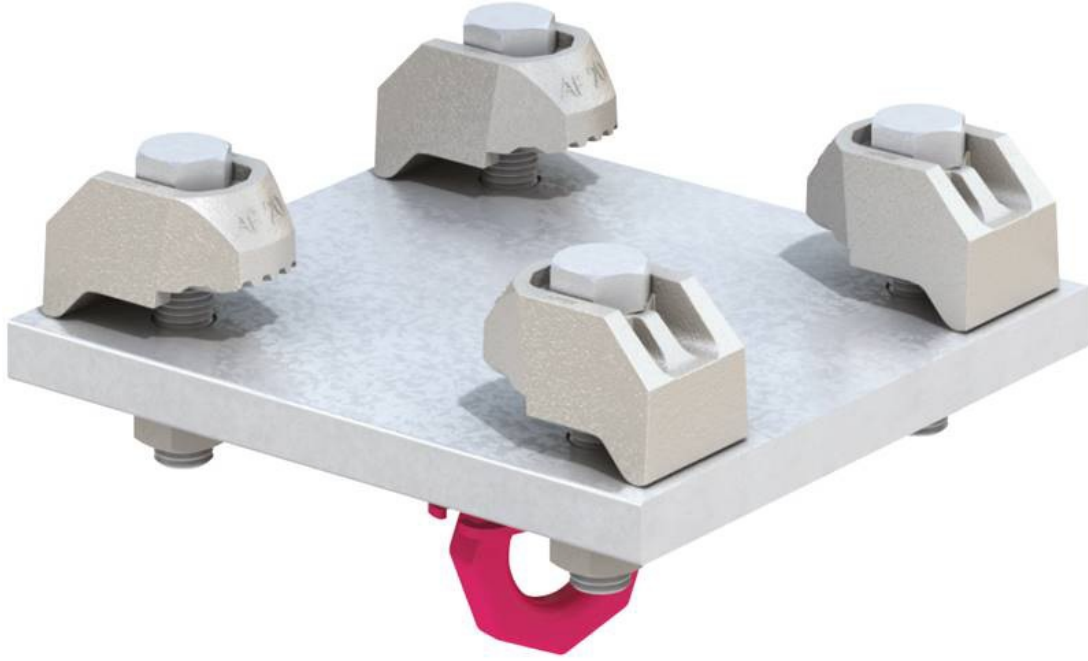


Lindapter

Garanti: 12 ay
Bu ¼r¼ne ait T¼rkiye ii kapı teslim fiyat ve teslim s¼resi ieren teklifimizi almak iin info@yursat.com.tr e-posta adresine baŐvuru yapabilir ya da ayrıntılı bilgi iin +90 224 240 03 04 numaralı telefonumuzdan bizlere ulaŐabilirsiniz. **Lindapter** Markası, tedarik s¼resi iin l¼tfen bizimle iletiŐime geiniz.

Firmamız Lindapter T¼rkiye Distrib¼t¼r¼ veya temsilcisi deĐildir. Firmamız sipariŐ durumunda, belirtilen ¼r¼nlerde sadece Orjinal ve yeni ¼r¼n teklifi sunmaktadır. Bu sitede g¼sterilen Özel marka adları ve ticari markalar ilgili sahiplerinin m¼lkiyetindedir, talep durumunda kaldırılmaktadır.



¼r¼n	Aıklama
Lindapter clamps - type A	TPG - TZN
Lindapter clamps - type B	TPG - TZN (see attached data sheet)
(Screw) M20 x 90 - ISO 4017	
(Nut) M20 - ISO 4032	
(washer) A21 - ISO 7089	
D2 M16 6.5...20mm	
High friction clamp (AF12M)	
Washer for high friction clamp (AF12P1)	
Packing piece (AF12CW)	

High friction clamp (AF12S)	
Packing piece (AF12P2)	
FF10 LINDAPTER	
FERRULE FF10	
FERRULE FF12	
N0295 TEG FZN CF M16	188732 Girder clamp type CF ductile iron, hot-dip galvanized for M16 screws clamping ranges 8-16mm
Lindapter Tragerklemme Typ AF	
N0295 TEG FZN AF MM12	152787 Girder clamp type AF ductile iron, hot-dip galvanized for M12 screws average cam height = 12.5mm
N0295 TEG ZN B MM20	15575 Girder clamp type B malleable iron, galvanized for screws M20 average cam height = 10.0mm
N0295 TEG ZN FF M8	15583 Floorfast - eccentrically stepped clamp malleable cast iron, galvanized for M8 for carrier flange thickness 3-15mm
FF-M8*50	
FF-M8*60	
N0295 TEG FZN CF M16	188732 Support clamp type CF Nodular cast iron, hot-dip galvanized for screws M16 clamping ranges 8-16mm
N0295 TEG FZN LR M12	122502 Flexible two-part support clamp type LR malleable cast iron, hot-dip galvanized flexible clamping range 3- 12mm Flange inclination up to 15° possible
N0295 TEG FZN P1 LM12	122501 Compensating washer type P1 long M12 malleable cast iron, hot-dip galvanized for screws M12 disc thickness 6.0mm
N0295 TEG ZN LR M12	15590 Flexible two-part carrier clamp type LR malleable cast iron, galvanized flexible clamping range 3- 12mm Flange inclination up to 15° possible
N0295 TEG ZN P1 LM12	15597 Compensating washer type P1 long M12 malleable cast iron, galvanized for screws M12 washer thickness 6.0mm
N0295 ST FZN AFCW M12	119629 Compensating washer type AFCW M12, flat steel, hot-dip galvanized for screw M12 disc thickness 2.0mm
N0295 TEG FZN AF KM12	119630 Support clamp type AF Nodular cast iron, hot-dip galvanized for screws M12 short cam height = 5mm
N0295 TEG FZN AFW M12	150038 Insert part type AFW for carrier clamp type AF Nodular cast iron, flat steel, hot-dip galvanized for M12 disc thickness 5mm as a support for the nut or screw head when determining the screw length
N0295 TEG ZN FLS M8	158020 Beam clamp with joint type FLS high-alloy steel, galvanized connecting thread M8 adjusting screw M10 clamping range 3-17mm
N0295 TEG ZN FLS M10	147318 Beam clamp with joint type FLS high-alloy steel, galvanized connecting thread M10 adjusting screw M10 clamping range 3-17mm
N0295 TEG ZN FL1 9	234934 Beam clamp type FL malleable cast iron, galvanized with hole 9mm for clamping range 3-17mm with adjusting screw M8
N0295 TEG ZN FL2 11	186296 Beam clamp type FL malleable cast iron, galvanized with hole 11mm for clamping range 3-19mm with adjusting screw M10
N0295 TEG ZN FL3 13	102108 Beam clamp type FL malleable cast iron, galvanized with hole

N0295 TEG FZN LR M20	13mm for clamping range 3-23mm with adjusting screw M10 273329 Flexible two-part beam clamp type LR Malleable cast iron, hot-dip galvanized Flexible clamping range 3- 20mm Flange inclination up to 15° possible Also suitable for long holes Assembly instructions under the following
N0295 TEG TZN P1 LM20	329111 Compensating washer type P1 long M20 malleable cast iron, hot-dip galvanized for screws M20 washer thickness 10.0mm Assembly instructions under the following link: https://www.lindapter.com/de/montageanleitung Minimum quantity: 100 pieces, as packing unit: 50 pieces Quantity differs from the original desired quantity of 70 pieces
clamps – type A A12 M12	
clamps – type A A16 M16	
TYPE CW 12 M12	
HB10-1 HDG	
N0295 TEG FZN AF KM16	98173 Beam clamp type AF spheroidal cast iron, hot-dip galvanized for screws M16 short cam height = 8mm
N0295 ST FZN AFCW M16	98174 Compensating disc type AFCW M16, flat steel, hot-dip galvanized for screw M16 disc thickness 2.0mm
AFW 12 Steel	
AF12S	
AF12CW	
N0295 ST FZN AAF M12	275363 two-part self-adjusting beam clamp type AAF ductile iron, hot-dip galvanized clamping range 5-26mm
N0295 ST FZN AAF M16	274480 two-part self-adjusting beam clamp type AAF ductile iron, hot-dip galvanized clamping range 6-30mm
LAAF075	
N0295 TEG TZN FF M10	251491
N0295 TEG FZN AFW M12 / 150038	
N0295 TEG FZN AF KM12 / 119630	
FF10 M10	
N0295 TEG ZN FF M8- 15583	15583 Floorfast - eccentric stepped clamp Malleable cast iron, galvanized for M8 for beam flange thickness 3-15 mm
N0295 TEG FZN AF MM12-	152787 Beam clamp type AF ductile iron, hot-dip galvanized for M12 screws average cam height = 12.5 mm
N0295 TEG ZN A MM20 (15564)	Beam clamp type A Malleable cast iron, galvanized for M20 screws average cam height = 10.0 mm galvanized
N0295 TEG ZN FF M10	15581 Floorfast - eccentric stepped clamp Malleable cast iron, galvanized for M10 for beam flange thickness 3-15 mm
N0295 TEG ZN A KM16	Beam clamp type A Malleable cast iron, galvanized for M16 screws short cam height = 5.5 mm Installation instructions at the following link: https://www.lindapter.com/de/montageanleitung short cam height, cam height: 5.5 mm galvanized
15563	N0295 TEG ZN A MM16 Beam clamp type A Malleable cast iron, galvanized for M16 screws average cam height = 8.0 mm Installation instructions at the following link: https://www.lindapter.com/de/montageanleitung medium cam height,

	cam height: 8 mm galvanized
15559	N0295 TEG ZN A LM16 Beam clamp type A Malleable cast iron, galvanized for M16 screws long cam height = 11.0 mm Installation instructions at the following link: https://www.lindapter.com/de/montageanleitung long cam height, cam height: 11 mm galvanized
N0295 TEG ZN A MM12	Beam clamp type A Malleable cast iron, galvanized for M12 screws average cam height = 6.0 mm
Typ LR M12	
Typ P1 lang M12	
Typ CF212	
N0295 TEG FZN CF2 M12	354575 Beam clamp type CF212 Spheroidal graphite cast iron, hot-dip galvanized for M12 screws Clamping ranges 12-20 mm
7090 ST ZN 12	206913 Hardness 200HV with chamfer
934 .8 ZN M12	70322 6kt nut
931 8.8 ZN 12X80	66531 Hex screw
931 8.8 ZN 12X250	275497 Hex screw
14399 C45 TZN 17 KOELNER	447919 HV disc
14399 10.9 TZN 16X40 KOELNER	DIN EN 14399-4:2015 HV screws 448659 HV screw
14399 10.9 TZN 16X45 KOELNER	448660 DIN EN 14399-4:2015 HV screws
15554	N0295 TEG ZN A KM12 Carrier clamp type A Malleable cast iron, galvanized for M12 screws short cam height = 4.5mm
15559	N0295 TEG ZN A LM16 Carrier clamp type A Malleable cast iron, galvanized for M16 screws long cam height = 11.0mm
15544	N0295 ST ZN CW M16 Shims type CW Flat steel, galvanized for M16 screws Washer thickness 3.0 mm
15543	N0295 ST ZN CW M12 Shims type CW Flat steel, galvanized for M12 screws Washer thickness 2.5 mm
15564	N0295 TEG ZN A MM20 Carrier clamp type A Malleable cast iron, galvanized for M20 screws average cam height = 10.0 mm
309651	N0295 ST FZN AAF M20 Two-part self-adjusting beam clamp type AAF Ductile iron, hot-dip galvanized Clamping range 6-40 mm
15600	N0295 TEG ZN P2 KM16 Compensating washer type P2 short M16 Malleable cast iron, galvanized for screws M16 Washer thickness
15594	N0295 TEG ZN P1 KM12 Shim type P1 short M12 Malleable cast iron, galvanized for M12 screws Washer thickness
15545	N0295 ST ZN CW M20 Shims type CW Flat steel, galvanized for M20 screws Washer thickness 4.0 mm
87941	N0295 TEG ZN P1 KM16 Compensating washer type P1 short M16 Malleable cast iron, galvanized for screws M16 Washer thickness
Zusatz Typ CW M16	
Zusatz Typ P1 M12 kurz	
Zusatz Typ P2 M16 kurz	

Zusatz Typ CW M20 Zusatz Typ P1 M16 kurz	
N0295 TEG ZN A MM10	15561 Carrier clamp type A Malleable cast iron, galvanized for M10 screws average cam height = 5.0 mm
N0295 TEG ZN W M10	236068 Insert type W Flat steel, galvanised for filling the recess of the beam clamp type A At Determining the screw length: Add dimension T (thickness of insert) T = 5.5 mm. See assembly instructions below. the following