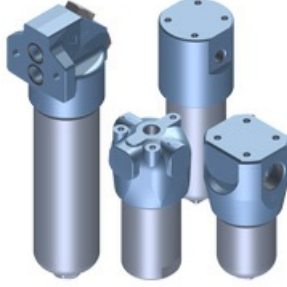


Mp Filtri



Garanti: 12 ay
Bu rne ait Trkiye ii kapı teslim fiyat ve teslim sresi ieren teklifimizi almak iin info@yursat.com.tr e-posta adresine baŐvuru yapabilir ya da ayrıntılı bilgi iin +90 224 240 03 04 numaralı telefonumuzdan bizlere ulaŐabilirsiniz.
Mp Filtri Markası, tedarik sresi iin ltfen bizimle iletiŐime geiniz.

Firmamız Mp Filtri Trkiye Distribtr veya temsilcisi deĐildir. Firmamız sipariŐ durumunda, belirtilen rnlerde sadece Orjinal ve yeni rn teklifi sunmaktadır. Bu sitede gsterilen zel marka adları ve ticari markalar ilgili sahiplerinin mlkiyetindedir, talep durumunda kaldırılmaktadır.

rn	Aıklama
Mr2503m25a P01	
Cu2101a10anp01	CU2101A10ANP01
Mf1003a25hbp01	
8hp0652a10anp01	
8hp0651a10anp01	
8hp0653a10anp01	
Fmp1352bag2a10np01	FMP1352BAG2A10NP01 Complete filter, glass fiber 10µm PLEASE CHECK THE NAME REQUESTED (Filter is without clogging indicator or Plug "T2V" (item 2) included
8hp1352a10anp01	HP1352A10ANP01 Referenz: 1731
Mf4002p25nbp01	
Mf4003a25hbp01	Gewicht/Stk: 1,24000 Zolltarifnummer: 84212980
Mr2504a10ap01	Brand : MP FİLTRİ SİZE : D1=105 D2=71 H=462
MF1003A25HBP01	Filterelement
SF510M90	8SF510M90
8CU250A25N	CU250A25N Referenz: 1184
CS100A25A	8CS100A25A
CS-100-P25-A	
MF1801P25NBP01	
Element no:MF0301P25NB	

FMP0652-BAG2P001	
HP1352A10ANP01	8HP1352A10ANP01 P01 = MP Filtri Standardversion (mit MP Logo)
CU-350-A25-N	
MF4003A10HBP01	
CU2103A06ANP01	
CU9503A06ANP01	
ZH224068 hydraulic filter	
CU1102M60ANP01	
MF1001A10HBP01	8MF1001A10HBP01
MPF-100-1-A-G2-A10-H-B-P01	MPF1001AG2A10HBP01
MPA220G1M90 2" BSP	
MPA220G1M90 2" BSP	
MPF1001AG2A25HBP01	
8CU1102A06ANP01	
MR2504A06AP01	
8CU350A10N	
8MR1004A06A	
8HP0394A06ANP01	
CH-070-A25-A	Filterelement
EGE-6	sprocket
EGE-3	sprocket
SAP-054-G1L-10A--P01	SAP054G1L10A
FHB3202BAF1A10NP01	FHB3202BAF1A10NP01 Weight/pc: 15.60000
DLA50VA51P01	24 V, reed contact replaces KR71VP01 Weight/pc: 0.16000
FMP0653SAG2A03HP01	FMP0653SAG2A03HP01
DLA70VA51P01	DLA70VA51P01 24 V, reed contact replaces KR81VP01
8HP0653A03AHP01	HP0653A03AHP01
MF10002A25HBP01	MFG: 17OP006119
MF1003A16HBEP01	filter element Microfiber 16µm NBR seal Bypass valve 3bar opening pressure Weight: 0.8kg Customs tariff number: 84212980

FHB0651DAF1A10NP01	FHB065-1DAF1/A10N/P01
HP1352A10ANP01	8HP1352A10ANP01
8HP1352A10AHP01	
8HP0501A10ANP01	
MPF-100-2-A-G2-A25-H-B-P01	return filter
MF-100-2-A25-H-B-P01	filter element
MPF 1003AG2A25HBP01	
8MF 1003A25HBP01	
MF4002P25NBP01	8MF4002P25NBP01 Referenz: 2087
FRI250BAG1A10N	FRI250BAG1A10NP01 Referenz: 20163
FRI040BAG1M25N	FRI040BAG1M25NP01 Referenz: 20837
DVA20VP01 (Optional)	DVA20VP01 OPT. 2.0 BAR replaces V6
MP Filtri CS 050 A10 A	
MP Filtri HP-039-2-A25-A-N-P01	
8CU100A06N	CU100A06N
8CH150P25A	1071 CH-150-P25-A
MP-CS-050-A10-A	Cartridge replacement filter 10µm microfiber H=145mm, OD=96mm, IG=G3/4"
HP-039-2-A25-A-N-P01	8HP0392A25ANP01 1642
8CU1101M60ANP01	CU1101M60ANP01
8HP0652A25AHP01	
3500-SY-MP 11 filter	PP filter with pretreatment chamber, 47 pieces of 295/64 mm filter disc, filtering surface 3.1 m2, Waste holding capacity 12 L. Capacity 15 m3/h, Input/Output: d50/d40 PP Magnetic pump (max. Pump Cap. 18 m) 3/h, max. P: 18 meters). Motor 1.5 kW/400V/3PH.
MPF 4600-PP-SY-MP12/B5-POF filter	PP filter with pretreatment chamber, 41 filter discs of 350/60 mm, filtering surface of 3.8 m2, Waste holding capacity 24 L. Capacity 23 m3/h, Input/Output: d63/d50 PP Magnetic pump (max. Pump Cap.30 m3/h, max. P: 22 m). Engine 2.2 kW/400V/3PH.
CS050P25A	FILTER ELEMENT \ INNER DIAMETER: 24 MM \ OUTER DIAMETER: 95 MM \ LENGTH: 185 MM
EGE 5 SGEA51	
HP3204A10VSP01	

HC3310 FGS 40 H	
HC9600FKS8H	
1POG20FNS025G	
SGEA21M05055	
FHP1352BAG2A10NP01	FHP-135-2-B-A-G2-A10-N-P01
HP1352A10ANP01	HP-135-2-A10-A-N-P01
HP-135-2-A10-A-N-P01	ELEM.FILT. HP 135-2-A10-AN 8HP1352A10ANP01
DL-E-50-V-A-50-P01	STOPPAGE INDICATOR DLE50VA50P01 DLE50VA50P01
MF4003A10HBP01	
HP3203A10ANP01	
MF7501A10HBP01	
MPF1002AG3A25HBP01	
HP-065-1-A10-A-N-P01	
MPF1003AG3P25NBP01	MPF1003AG3P25NBP01 Komplet
8MF1003P25NBP01	MF1003P25NBP01 Replacement filter element
HP-065-1-A10-A-N-P01	8HP0651A10ANP01
MF1001A10HBP01	OIL FILTER
8MF1002P25NBP01	MF1002P25NBP01
pressure switch	
8HP0651A10ANP01	HP-065-1-A10-A-N-P01
MF1002A25HBP01	ELEM.FILTR.MICROFIBRA MICROFIBRE FILTER ELEMENT
HP0503A10ANP01	ELEM.FILTR.MICROFIBRA MICROFIBRE FILTER ELEMENT
HP-050-3-A10-A-N-P01	8HP0503A10ANP01
HP-150-3-A10-A-N-P01	8HP1503A10ANP01
FF200336B	
FRI250BAG1A10N	RETURN FILTER
DVA20VP01	VISUAL INDICATOR EX V6
FRI040BAG1M25N	RETURN FILTER
DVA20VP01	VISUAL INDICATOR EX V6
8HP1352A03ANP01	HP1352A03ANP01

8HP0653A06ANP01	HP0653A06ANP01
20774	BE-A-15-HA-50-P01 changeover 1.5 bar
HP-135-2-A25-A-N-P01	8HP1352A25ANP01
HP1353A10AHP01	ELEM.FILTR.MICROFIBRA
AF502000291	HP0392A25ANP01 old name: HP-037-1- A25-AN HP-039-2- A25-AN-P01
AF403000175	U1101A25ANP01 Microfiber Element Filter CU-110-1-A25-AN-P01
AF502000600	HP0503A06ASP01 Microfibre Filter Element HP-050-3-A06-AS-P01
AF403000884	CU4005A10ANP01 Microfibre Filter Element CU-400-5-A10-AN-P01
AF502001292	HP1353A06AHP01 Microfibre Filter Element HP-135-3-A06-AH-P01
AF502000015	HP0111A03AHP01 Microfibre Filter Element HP-011-1-A03-AH-P01
LMP2111BAA6P10NP01 LIST. CAD	EcX LMP2101BAG1P10NP01
DLE20HA50P01 LIST. CAD	EX E6
MPF1841AG2A06HCP01	FILTRO SUL RITORNO RETURN FILTER
MPF1842AF3A06HBP01	FILTRO SUL RITORNO RETURN FILTER
MR2503A10AP01	MICROFIBER FILTER ELEMENT
MP-CS-AB-040-P03-A-L	Air filter cartridge 3µm thread G3/4"
MP-CS-050-M60-A	Cartridge replacement filter H=145mm, OD=96mm, IG=G3/4" 60µm metal mesh
MF1001M60NBP01	MP-MF-100-1-M60-NB-P01 Replacement filter H=94mm, OD=70mm, ID=28.7mm 60µm metal mesh, bypass 1.75bar
MP-CS-150-P25-A	Cartridge replacement filter 25µm paper element H=227mm, AD=129mm, G1 1/4"
SF2504AF1SM90	
MPF-184-2-A-F3-A06-H-C-P01	
MPF-184-1-A-G2-A06-H-C-P01	
LVA-20-T-A-P-M10-S01	2090154 Level indicator with thermometer
HP-135-2-A10-A-N-P01	FILTER ELEMENT
Cu100m60	
Lvu1500pa10p01 Level Indicator	

Gup-P-003
Lmp-400-2-B-A-G2-A10-N-P01+t2
Lmp-401-5-B-A-G1-Xxx-P01
Msh050svg1a10
135-/2/A03
Hp1351a25ahp01 Filter-Element
Str0502sg1m90p01 Hydraulic Power Transmission Spindle Cnc Machine Tools
Fhb-065-2-B-A-F1-Xxx-P01
Lmp-400-4-B-V-F2-Xxx-P01
Fhb-320-1-S-A-F1-A10-H-P01
Hp0652a10h
Lmp-400-2-B-V-G1-Xxx-P01
300094 Filterelementtefb 70.25vg
Hf3202a10an
Mf1801m25nbp01
Lmp-400-2-B-A-G1-M60-N-P01+t2
Ege6
Sf-510-M90-N-P01 Filter
Mf1003a25hb Filter
Lmp-430-5-B-A-F1-A10-N-P01+s
Hp3204a25an Filterelement
Lmp-400-3-S-A-G1-Xxx-P01
Mfg005942
2501a1afs
Mf7501a10hbp01 Filterelement
Filterelement Mf 0201a25hbep01
Lmp-950-3-S-A-F1-Xxx-P01
Cu250a10n Filterelement
Cu4005a10anp01
Cu2101m25anp01

Cs150a06a Patronen-Filterelement
Cu100p10n Filter
8mf400-3a25hb
Lmp-900-2-B-A-F1-A25-N-P01+t2
Hp1352a03anp01
Fhb-065-1-B-V-F1-Xxx-P01
Fhb-050-5-B-A-F1-Xxx-P01
Lva10tapm10s01
Mp Hp 065 3 M60 An
Lva30sapm12-S01
Hp0501a10anp01
Mps-050-R-G2-A10-A-Vr
Filterelementhp-065-3-A10-A-N-P01
Esa.21.B04.W.M.F 070/1 S M090 G1 1.2 Hydraulikfilter (Mmc 80)
Str0866sg1m90p01 Filter
50m250ag
Str070-4-Sg1-M60
Hp0392a25an Filterelementalte Nr. Hp0371a25an
?Pf-400-3-A-G1-P10-N-B-P01+ew-15 Filter
Sgea2100?050
Lmc200mfs1004e Lmc200mfs1004e
Hp1351a25ah Der Backbone- Filter/Element
Lmc160mfs1004s Glocke
2170 Mpa012g1m90
Sf-503-M90-N-P01 Filter
Ch150a10a
Lmp-400-2-B-A-F1-Xxx-P01
Elastischer Element Ege 5 Rp

Lmp-400-5-B-A-G2-A10-N-P02+t2
Sa115g1l10a
Fhp-135-2-B-A-G5-Xxx-P01
Cu025m90n Filterelement
Fmm0503bhda10np03
Lmp1102sab2m25np01 Filter
Fhp-135-2-B-V-G5-A10-N-P01
Hp3202a25an Filterelement
Sp-Cfe 250/25
Fhp-135-2-S-V-F1-M60-N-P01
Fmp0392saa6a06np01
Fhp-135-2-B-A-G1-Xxx-P01
Mph1163cdsag2a25p01+bea14ha50p01 Drain Filter With Indicator.
Glocke Monoblock-Lmc 200 M Fs200 4s- P00, "mp Filtri"
Sf 540m250np01 Filterelement
Cs150p10a
Cu 630 A25n
Lmp-951-2-B-A-F1-Xxx-P01
Adnema364tc
Lva30tvpm12s01
Dex50va50p01 Filter
Mf 180 1 P25 Nb
Lmp-430-5-B-A-G1-Xxx-P01
?H-050-P25-A Filter
Lms-250-A-Fsa-003
Lmp-950-3-B-A-F3-A25-N-P01
Fhb-065-1-S-A-F1-Xxx-P01
Lva30tapm12s01 Level Indicator
Cu250m60n

Fx15 125vac-3a/110vdc-0,15a	
Ege3rr	
Mp10405010	
Hp0653?10?Np01	
8mf1802a16hbep01 Filterelement	
Cu 100 M25 N Filter	
030061	
Cs150a10a Filter	
A11110 Filterelement	
Str100-4-S-G1-M90-P01 Mp Filtri Filter	
Lmc206afrc070	
Hp3202m250anp01	
Lva30-T-Apm12s01	
Mf4002m25nb Filtroelement	
Hp03202a10anp01	
Lvk30am122t7p01-Tv12 Level Sensor 286mm	
Lmp-400-5-S-A-F1-Xxx-P01	
Lmc250mfs1004s Glocke	
Mf0301p10nb Filterelement	
Lmp-401-4-B-A-G2-Xxx-P01	
Lmp-430-6-B-A-G2-Xxx-P01	
Lpa2-W-M-S-X-30-Eu	
Fhb-065-1-B-A-F1-A25-N-P01	
Lmp2101sag3p01	LMP2101SAG3XXXP01 + T2 filter housing
Lva20tvpm12s01	FKM version Special net price for 100 pieces
Cu630a10n	
Filter Saug-Str 086-3 B G1 M60 P01, "mp Filtri"	
Cu2103m90anp01 Filterelement	
Mf4003a10hbp01	

34082	
AP405000009	EGE2 NBR black - 85° shore A EGE-2
Ege8	
Schalter Manometer Svm-3g A P01, "mp Filtri"	
8cs050p10a	
Sp-Pf-102/A25	
Fmp-039-2-B-A-A-6-Xxx-X-P01	Filterelement
Hp1352a25anp01	Filterelement
Hp1352a10anp01	Filterelement
1057 8ch050m60a	
Lmp-951-2-B-A-F1-A10-N-P01	
Mpf1811ag1a10hbvip01	
Dichtung Gum P 200, "mp Filtri"	
Sm16g50a	
Fhb-065-2-S-A-F1-A10-H-P01	
Mf1003a10 Hbp01	Filter
Fhp-135-2-B-A-G2-Xxx-P01	
Cs-150-A10-A	Filter
Hp1351a10anp01	
Str-140-2-S-G1-M90-P01	
Sa145g1l40a	
Lms-250-M-Fszfr-4s	
Ta80bo3b001p01	Hydraulikfilter Sapun (Mmc 80)
Filterelementmf-180-1-A25-H-B-P01	
Mf-100-3-P10-Nb	Filter-Kartusche
8mf1801a25hbep01	
Hp3202a10ah	
Hp-020-1-A25-V-H	
Lmp-900-1-S-A-F1-Xxx-P01	

Lmp-400-5-S-A-G2-Xxx-P01	
Mph 250 1edsag2 A10 P01 Filter	
Cu250m125	
Filterelement Cs050a10a	
Fmp 038 1 B A G1 A03 N P01 K71 G1/2 Filter	
HP0651A10ANP01	
Hp3203a10h	
10-A03-A-H-P01	
Str 100-1 B G2 M90	
Mf1001a25hbp01 Filterelement	
Hp1351a06vup01 Filter	
Lmp-400-5-S-A-G1-Xxx-P01	
MF1001P10NBP01	10 micron paper material
Lmp-900-1-B-A-F1-A10-N-P01	
Mf4002a10hb Filter	
Fx15 Indicator	
Cs150a25a Filterelement	
Mf1801p25nbp01 Filterelement	
Hp1352a25ahp01 Filterelement	
8a10I40	
Mpf-180-1-A-G1-P25-N-B-Er	
Fmp0392baa2m25np01 Filter	
Cs-150-A10-A	
Fhp-135-2-S-V-F1-Xxx-P01	
Mf0202p10nbp01	
Mf1002p025nbp01	
Lmp-400-6-B-A-F1-A25-N-P01+t2	
Filterelement Hp 0501a25anp01	
Fhp-135-2-B-A-F1-Xxx-P01	
Mf1002a25hbp01 Filterelement	

Cu1102m90hnp01 Filter
Cs050m90a Filterelement
Mf1001p025nbp01 Mp Filtrfiltr
Hp0394m60vnp01 Filter Element
Indikator Der Verschmutzung Dla 70has1 P01, "mp Filtri"
Hp0652a25an Filtroelementmineral Oil Sealed
Sap 115 Luftfilter (Cartridge)
Hp1353a10an
Lmp-400-2-B-A-G1-M25-N-P01+t2
Mf-400-2-A10-H-B-P01
Cu630m60n Hydraulikfilter (Metall)
Hp3202a10anp01
A10 L10
Cg150p25a
Sgea31m06077
Hp0653a10anp01
Hp0394a25an Filterelement
Cu250a25n
8mf 030 1a25 Hb Filterelement Mit Der Drain-Filter.
Str-140-65-G1-M250-P01 Filter
Hp1352a10ah
Lmp-400-3-B-A-F2-Xxx-P01
Mph1001bosag1a25vt
Mf1003p10nbp01 Filterelement
Cu4006a06anp01 Return Filter
Lva30sapm12s01 Level Indicator
Hp 320 2a 16an Filter
Ege5
Fhp-135-2-B-A-F5-A25-N-P01

Lmp-400-6-S-A-G1-Xxx-P01
Glocke Monoblock-Lmc 140 M Fs100 4e, "mp Filtri"
Sgeg60h03130
8cs150m60a
2050269
Hp3202a03vrp01
Hp0653a06ah
Lmp-400-2-B-A-G2-Xxx-P01
Mf 400 2 M60nbp01 Filter
Fhp-135-2-S-A-G1-A25-H-P01
Hp0652m60anp01
Csg-050-A10-A
Hp-135-2-A10-A-N-P01
Lmp-400-5-B-A-G2-Xxx-P02
Lmp-950-3-B-V-F1-A25-N-P02
Glocke Monoblock-Lmc 140 M Fs100 4s, "mp Filtri"
Mp90000666
Mpa280g1m250 Filter
Mf-100-1-P25-N-B-P01 Filterelement
Hp5004a06anp01 High Pressure Filter
Fhb-135-3-B-A-F1-Xxx-P01
Sgea51709109
Lmp-400-2-S-A-F1-Xxx-P01
Fhp-135-1-T-A-G2-A25-H-P01
Mf1003p10nb Filter
140037109 Kw 26.16
Sgea51d05080
Lcpg26mcbp01
Sa185g1l40
Dichtung Gup 004, "mp Filtri"

Parbak 144 O-Ring63.96 X 2.18
Mpt1002sag2a25bp01 Filter Assembly With Housing
Bh4hc Dn 025
Sge-A51-M10-109-Fg
8hp0502a25anp01
Lmp-430-5-B-A-G1-A03-N-P01
Hp1351a10vup01 Filter
Lmp-900-1-B-A-F3-Xxx-P01
Lms-300-M-Fs200-4s
Cu4006a25an Filterelement
Hp065 2 A25 N
Vec20aa50p01 (E1p01)
Cu1102m25anp01 Filterelement
Ege2 Elastisches Element
Lmp-950-3-B-A-F3-Xxx-P01
8hp500 4a10anp01 Filterelement
Cu040m250n Filterelement
Fhb-320-1-S-A-F1-Xxx-P01
Mpf1002ag2
Mf1003a25hb
Hp1353a10anp01
Fhb-135-1-S-A-F1-A10-H-P01
Bh4hc Dn 010
Fhp135-2-S-A-G1-M60-N-P01+n7
Cu630m60n
Fhp-135-2-S-A-G1-A10-H-P01
Ege2 Ege2
Cu350m250n Filterelement
Sgea21fs100 Sgea21fs100
Lmp-951-2-B-A-F2-A16-N-P01

Hp0503p10anp01
Lva30tapm12s01
Sgeg40m07110 + Ege4rr + Sgeg40pd08045
Mf0301p25nb Cartridge(Filter Hidraulik)
Ch-070-M60a
Fhb-065-2-B-A-F1-A25-N-P01
Hydraulischer Filter Mp Filtri Mf 1002a 10hb
Fhb-320-2-B-A-F1-Xxx-P01
Lmp-430-6-B-V-G1-Xxx-P01
Hp-135-2-A25-A-N-P01 Filterelement
Cs-050-P25-A
Lvk10am12t1p01
Fhp5004baf3a10np01
Mps050-Rg1p10a+cs0
Ege6rr
Glocke Monoblock-Lmc 200 M Fs100 4s, "mp Filtri"
Mpf-030-1-A-G1-Xxx-P01 (Ex Mpf0301ac1)
Lmp-400-4-B-A-G2-Xxx-P01
Lmp-400-2-B-A-G1-A10-N-P01+t2
Scs100fg1p10ap01
Lmp-400-2-B-A-G2-M90-W-P01+t2
Str100-3sg1-M250p01
044014 Filterelement Hp-050-4-A16-A- N-P01
Hp3203a10an Filterelement
Mr-100-4-F16-F Filter
Fhb-065-2-S-A-F1-Xxx-P01
Mpm-030-G2-M60

Str1401bg1m90
Lmp-400-4-B-A-G1-Xxx-P01
Ct150a25ab
Fmm0503badm60np03 Filter Druckstutzen
Fhb3202svf1a03np01
Sge-A51-D060-70-Fg
Mp-S050rg1p25at
Fhp-135-1-S-V-G5-Xxx-P01
Hp1352a06ahp01
Lmp-400-3-B-A-F1-Xxx-P01
110-1-A06-A-N-P01
Fhb-065-1-B-A-F1-A10-N-P01
Lmp-400-2-B-A-F2-Xxx-P01
Sa185g1l10a Filter
Hpo_393a16a-Npo1
Hp0502a10anp06 Filterelement
Lena5001a1afs
Cu100m60n
Fhp-135-2-B-A-F2-Xxx-P01
Sf-504-M90-N-P01 Filter
Fhp3202sag3p01
Mf400-2-M25-N-B
Lmp-401-2-B-A-G1-Xxx-P01
Mf1002a10hbp01 Filterelement
8hp1353a10anp01
Ch150p25a Filter
Cu100m250n
Sgea21fs200 Sgea21fs200
Lmp-400-5-S-A-F2-Xxx-P01
Lmp-951-B-A-F3-P01 Filterkopf

Schalter Manometer Em1-Ag A P01, "mp Filtri"
Ta80 B 10 A 000 P01 Filter
Mf1801a25hb Hydraulic Cartridge(Filters)
Lmp-900-2-S-A-F1-Xxx-P01
Sa185g1l10a Verschnaufpause In Der Sammlung
Lmp-400-3-B-A-G1-Xxx-P01
Lmp-400-5-B-A-F1-Xxx-P01
Mf0301m25nb Filterelement
Cs050m90a Filter
Cu040m90n Filterelement
Lmp-430-6-B-A-F1-A06-N-P01
Sgea21m05055 Sgea21m05055
Fhb-065-1-B-A-F1-A03-N-P01
Mpf-400-2-Ag-2
Bva14p01
01zag 26 C4 01 D 01zag C4 26 01 D
Hp0392a10anp01
Sgea21fs100
Sgea21m04048 Sgea21m04048
Lmp-400-6-S-A-F2-Xxx-P01
Fhb-065-3-S-A-F1-Xxx-P01
Hp0111a25ahp01
Mr 250 1 A10 A P01 Filter
Mpa180g1m90
02zag 08 Co 34 D
Lmp-900-1-S-A-F3-Xxx-P01
Fhp-135-2-S-A-G2-Xxx-P01
Fhb-050-4-S-V-F1-Xxx-P01
Str0861bg1m60p01

Mf4002p10nb Filterelement
110 1 A06 A N P01
Hp3202a10ahp01
Fmp3203bag1a25n Filter Hochdruck
Hp0371m60an
Hp1352a03np01
Fhp1352bg2a10np01+dea50ha50p01 Pressure Filter With Indicator.
Mf1002a10hb Filterelement
Hp 0201 A03ah
Sgea31m06077fg
Dp090a020anp01 Filterelement
Lena1501a1afs
Str-140-4-B-G1-M90-P01
Cu040 M25 N
Lmc350afsu080
Hp3204m25anp01 Filterelement
016009 Filter G1m90 Str-050-1-S-G1- M90-P01
Hp1351a03vup01 Filter
Mr2504 Filter-Element
Str1003bg1m900p01 Filter
Filter Druckstutzen Fmp 135 1 A B G1 P01, "mp Filtri"
Mf 1002a10hbp01 Filterelement
Mf0301p25nb
Hp 0201 A03ah Filter
Fhp-135-2-B-A-G1-A06-N-P01
Mpf 030 1 Ag1a25hbp01 + Fx15rm3 25 ???. Filter Drain
Sgea31fs200
Mf 0301p10nbp01 Filter
Fhp-135-2-S-A-G1-Xxx-P01

Mps050-Rg1p10a_C	
Cu2101m25anp01 Filterelement	
Lms-250-A-Fra-070	
Hp1353a10an Filterelement	
Mf1002p25nbp01	
Fri630saf1	
Filter Mf1002a25hbp01	
2050272	
Lcpg60ncas	
Cs150a10a Filter-Element	
Luftfilter-Sapun C Tankdeckel Hals Ta80 B 10 A 1 L 2 Po1	
Fhp0651bag2a10ns	
20472	
Mf4002p25nb	
??80?10?002p01	
Lmp-400-3-S-A-G2-Xxx-P01	
Mf-750-1-P10-N-B-P01	
Mf4003a10hbp01 Filter	
Ege-8	
Mpf1002ag3p10nbt	
Lmp-430-6-B-A-G1-Xxx-P01	
Cs-050-P10-A	
Hp0652a10ahp01	
Taf80b10a0l1mp01	
Dle20va50p01	DLE20VA50P01 OPT./ELEKT. 2.0 BAR old name: E6
Akam11-P-0242	
Sf-503-M25 Filterelement	
Cu2102m60anp01	
Hp0653m60n	
Lmp-900-1-B-A-F1-Xxx-P01	

Mf1801a10hb Filterelement	
Lmp-400-6-B-A-F2-Xxx-P01	
Sa075 G2 L40a Cbb.21b06.Cd 3/4 Hydraulikfilter (Mmc 80)	
Lmp-900-1-B-A-F3-M90-N-P01+t2	
Hp0392a06anp01	
Hp0392a25an Filter	
Str0451sg1m250p01	
Fhb-135-2-B-A-F1-A10-N-P01	
Hp0371m25an	
720008	
Hp0502a06anp01	
024123 Filterelement Cu-630-A10-N	
Fmp 038-2-B-Ag1-A25n/S Hydraulikfilter (Mmc 80)	
Lmp-400-2-S-A-G1-A06-N-P01+t2	
Mf0301p10nbp01	
Hp0502a10anp06 Filter	
Cu4005a10an	
MP-CS-100-A10-A	Cartridge replacement filter H=177mm, OD=129mm, G1 1/4" 10µm microfiber, SpinOn
Fhp-135-1-S-V-G1-Xxx-P01	
Fzp-039-3-Bab Filter Druckpumpe (Cartridge)	
Cu250m25n	
8h? 0502a10an Filterelement	
Gum-P-250	
Cu2102a06anp01	
019155 Filterelementmf-100-2-A10-H-B- P01	
Sgea21a21fs200	
Lmp-400-2-S-A-G1-A10-N-P01+t2	

Fhb-135-2-S-A-F1-Xxx-P01
Dva20hp01
Lena3501a1agsp01 Oelstandssensor
Sgea2100048 Sgea2100048
Lmp-900-1-B-A-F1-A25-N-P01+t2
Mf1802p10nb Filterelement
Cu-250-M25-N
Hp0502a25anp01
Str1003sg1m90p01
Fhp-135-2-B-A-F5-Xxx-P01
Str 0502 B G1m90p01
Mf1801a10hbep01 Filtroelement
Hp-320-4-A10-V-H
Hp3203a06ahp01 Filterelement
8ch150p25a
Hp0113a10ah Filter
Lmp-400-3-S-A-F1-Xxx-P01
Lmp-400-6-B-A-G2-Xxx-P01
Lva 30 Sapm12s02
Mf4002a25h
Fri-040-B-A-G1-M25-N-Vg
Fri100bag1p10
Lmp-430-6-B-A-F2-A10-N-P01
Filter Mp Filtri Mps100sg1250a
Mr1003a25a
Ege0
J7
Cu4003a06anp01 Purge/Case Drain Filter
Lmp-400-4-B-A-F2-Xxx-P01
065 2-?10

Ri-2121
Cu9503a10anp01
Fmp-065-1-B-A-G1-M60-N-P01+n7
Fhb-135-1-S-V-F1-Xxx-P01
Hp0502a25anp01 Filterelement
Filterelement Mp Filtri Hp 0372 M25 Anp01 (Hf0372)
Mf0301a10hb
Str-140-2s-G1-M250-P01 Filter
Mf7501a10hbp01
Icm 2.0
Hp0503a25anp01
Lmp-400-3-B-V-G2-A25-N-P01
Fhb-135-2-S-A-F1-A10-H-P01
Lms-250-A-Fsb-060
Filterelement Ch150p25a
Filter Mp Filtri Mf1002a25hb
Lmp-400-2-S-A-G1-A25-N-P01+t2
Fhp-135-2-S-A-G2-A10-H-P01
Dichtung Gup P002, "mp Filtri"
Mpf1842af1a16hep01 + Bla20ha51p01
Sgea21m05055fg
Lmp-210-B-G2-Kopf
Mf1003p10nb
Ch 050-P25-A
Hp0502a16anp01 Filter Element
Fhb-135-1-S-A-F1-Xxx-P01
Lmp-900-2-B-A-F3-Xxx-P01
Lmp-430-5-B-V-G1-A25-N-P01
Hp1352a10anp01

Cu250a10n	
Sm13g50a	
Vea 21aa50p01 Indicator T-021 Barmfg-04/1:5250 Vac-5a	
Lmp-401-3-B-A-G1-Xxx-P01	
Lmp-900-2-B-A-F3-A10-N-P01+t2	
8mf1002a10hbp01	
Cu-630-A10-V	
Cu100a06n	
Lmg201mfs2004s C2/19 Glocke	
Hp3203a10ah	
Lmp-400-2-S-V-G1-Xxx-P01	
Fhb-135-1-B-A-F1-A10-N-P01	
Filter Hp0502a10anp06	
Hp0503m60anp0	
Lmp-950-2-B-A-F1-Xxx-P01	
AP405000015	EGE3 NBR black - 85° shore A EGE-3
Lms-300-A-Fsd-070	
Cu630m250	
Sge-A21-Fs1m0	
Sgea01m01021	
8mf1801a25hbp01	
Lmc 350 A Fsu 070 Glocke Einteilig	
Sgea31?0342	
Cs 050 P25 A Filterelement	
Lmp-400-6-S-A-G2-Xxx-P01	
Sf504m25 Filterelement	
Cs100p10a	
Filter Mpt0251sag2a25ep01 Indikator C Fx15	
Mf4003a25hb	
Emi-B-Ci-A-Poi	

RI-G2-N-F3-S1a-S1-500 (Ex. Len-A-350-2-A-1-A-F-S)
Ufm041ta1010p01
Fhp-135-1-S-V-G2-Xxx-P01
Ho0652a10ha
Fhb-320-1-B-A-F1-Xxx-P01
Filterelementhp-135-3-A10-A-N-P01
Cg150a10a
Fmp1352bag2m10np01
Mf1801p25nbp01
Ege5rr
Cs150m90a
Mr-630-5-A10-A
Cu250250v Filter Element
Filter Fha0511baca25np01 C Indikator E7
Mr2504a10a Filter
Mf1002?25hbp01 Filterelement
Filter Hp0392f10anp01
Mpf0301ag1a06hep01
Fx15 125vac-3a/110vdc-0,15a Anzeige Einer Verunreinigung Des Filters
Mf1801m25nbp01 Filtroelement
Fhp-135-2-B-A-G6-Xxx-P01
Sf-503-?250-P01 Filter
Cu025m90n Filter
Dva50hp01
Fmp 065-2-S-Ag1-A25n/S Hydraulikfilter (Mmc 80)
Lmp-400-5-B-A-G1-Xxx-P01
Lmp-900-1-B-A-F1-A03-N-P01+t2
Mf1801a25hb

Fhp3202saf4m60nj	FILTER
2p 2barp	
Mf1003a10hb	
Fmm0502baca10np01 Filter Warmbrauchwasser Mit Visa.Indikator	
Elastischer Element Ege 0 Rp Gs, "mp Filtri"	
Filtroelement Cu350m60n	
Fhp-135-2-B-V-G1-Xxx-P01	
Lmp-400-3-S-A-F2-Xxx-P01	
Dp120a020anp01 Filterelement	
Fhb-135-2-B-A-F1-Xxx-P01	
1007.708	
Fhb-065-3-B-A-F1-Xxx-P01	
Fhp-135-1-T-A-G2-P01	
Sml1map01 The Filler Neck.	
Lvu1500pa10p01	
Emi-Cga.Poi	
Fhp-135-2-B-A-G1-A10-N-P01	
Cu350m60n Filterelement	
8cu2101m60anp01	CU2101M60ANP01 Filterelement
049k49201p100ho	
Sgea21m03048fg	
Fhb-135-3-S-A-F1-Xxx-P01	
Ege-2	
Filtermf4003p25nbp01	
Lmp-951-2-B-A-F2-Xxx-P01	
Str1001bg1m90p01	
Hp0372a10an	
Str 100-2bg1m60 Filterelement	
Fhp5004baf3a10np01 + Dla50ha51p01 Druckfilter	

Fhp1353bg2a10np01+dea50ha50p01 Pressure Filter With Indicator.
Dea50ha50p01
E7-5bar
Str0502bg1m90 Filtrelement
Msh-050-B-A-G3-M90-V6
Fhp1353bg2a06np01+dea50ha50p01 Pressure Filter With Indicator.
Str 070/4 Filter Saugseite Der Pumpe (Cartridge)
Mpf1002ag2a25hb Filtrelement
Ta80b03a001p01
Fhp-135-2-S-A-F5-Xxx-P01
Hp0502a10anp01 Filtrelement
Hp5003500asp01
044009 Druckfilter Fmm-050-4-B-A-D- Xxx-P01
Lmp-400-3-B-A-G2-Xxx-P01
Hp0653a25anp01
Mf1801a25hb Cartridge(Filter Hydraulik)
Lmc-250-M-Fs200-4e
A11-L10-A
Lmp-400-4-B-A-G1-M25-N-P01+t2
Hp1352a25an
Lmp-900-2-B-A-F1-A10-N-P01+t2
Mpi6304cdaa10p01
Filer Mps100sg1m90a
Ch-050-M90-A
Rts 18/40
Mfi002p025nbp01
Sf503m60 Filtrelement
Hp3202250an

Lmp-950-3-B-A-F3-A10-N-P01
Bea15ha50p01
Stutzen Te25a250
Ta80b10b002p01
Lmp-400-2-B-A-G1-Xxx-P01
Mf-180-1-A-A-10-H-B
Fhb-320-2-B-A-F1-A10-N-P01
Hp0394a06anp01
Mr6304a10a Filter-Element
016170 Saugkorb Str-065-4-B-G1-M250-P01 lieferzeit 6-7 Wochen
Mph1165cdsag2a25p01+bea14ha50p01 Drain Filter With Indicator.
Bs-Lpa-M-110-Eu
Lmp-400-3-B-A-G1-A06-N-P01+t2
Schalter Manometer Em1-C G A P01
Cs100p10a Filteralternative Nummer: Mpf574864
Fmp-038-1-Fa-G1-P01
Sgea31fs300
Lmp-401-4-B-A-F2-Xxx-P01
Lmp-210-3-S-V-G3-Xxx-P01
Hp 135 2 A10 A N P01 Filter
10860 Fri025bag1a25n
Mf 030 1 M25 Nb
Str 050 2 B G1 M90p01
Mp Filtri Tipo Hp037
A11110
Fhb-065-1-B-A-F1-Xxx-P01
Mpm-300-G1-M90
Mf-030-1-A10-Hb
Hp3202a25vnp01 Saug-Filterelement

Hp3202a025vnp01
Str 140 4sg1 M250p01 Filter
Hp3204a25anp01 Filter-Element
Lmc-250-M-Fs1mo-4s
Str0704bg1m90p01
Fhb-320-2-B-A-F1-A06-N-P01
Fhb-065-3-B-A-F1-A10-N-P01
Lmc250mfs2004e Lmc250mfs2004e
Lmp-400-2-S-A-F2-Xxx-P01
Fhb-065-1-B-A-F1-A06-N-P01
Sp-Cfe 250/125
Cs-100-A25-A
Hp3202a10anp01 Filter-Element
Fri-100-B-A-G1-M25-N-T2
Ege4
Cs100p25a
Cu630m25n
Lmp-430-5-B-A-F2-Xxx-P01
Hp1352a10an
Lmp-400-6-S-A-F1-Xxx-P01
Esa.11b04.W.M.F 050/2 S M090 G1 1/2 Hydraulikfilter (Mmc 80)
Hp 065 3 M60 An
Dichtung Gum P 140, "mp Filtri"
016033 Saugkorb Str-070-3-S-G1-M90-P01
8mr6305a10ap01
Cu850a10n Filterelement
Cu630m250cf Filter Element
Cu1102m90hnp01 Filterelement
Sa145g1l03a
Hp0503a10anp01

Hp_3203a25vnp01_Filterelement	
Mpf-180-1-A-G1-A10-H-B-Er	
Hp3202a10ha	
Mf180 1 A10 Hb E P01	
Cu025m60n	
Sgeg60g060502g	
Lms400afsh070	
Cu1101m25anp01_Filter	
Cs150a10a_Filterelement	
Sa075 G1 L40a Cbb.21b04.Cd 1/2 Hydraulikfilter (At 127)	
Mpa-150-M250-Ag_Filter	
Lvk30am122t7p01+tv12	
Hp1351a25ahp01_Filterelement	
Mf1801a25hbp01_Filter_Element	
Sf503m90np01_Filterelement	
2086	
Lmp-400-5-B-A-G1-A03-N-P01	
Lmp-430-5-B-A-G1-A06-N-P01	
Hp320 2 A25 An	
Elastischer Element Ege 2 Rp Gs, "mp Filtri"	
Cs-150-M60-A_Filter-Element	
Lmp-430-6-B-V-G1-A10-V-P01	
Bea20ha50p01	FE20H1AP01 und FX20R2M3
Mf-400-2-A10-H-B_Filter	
75034542	
Lms-300-A-Fsd-060	
Ho 020 1 A01 Ah	
Mf0301a16hbep01_Filter_Element	
8cs050m90a_Filter_Cs050m90a	

Sge-A21-Fs200
Hp0503m60anp01
Fmm0503bada10np03
Sa185g1l03a Luftfilter
0160 R 025 W
Fzp1361sva6a10up01 Filter
Mpf1002ag3p01
Lmp-400-6-B-A-F1-Xxx-P01
Hp3204a25an Der Backbone- Filter/Element
Str 070-4bg1m60 Filterelement
Mf0301a25hbp01
Filterelement Hp-135 1a 10 N P01, "mp Filtri"
Mfi002p010nbp01
Lmp-400-5-B-A-F1-A10-N-P01+t2
Filtroelement Cu350m250n
Lva30tapm12s01 Level And Temperature Indicator.
Fhb-065-1-B-A-F1-A10-N-P03
Hp0504a25an Filter
Mpf1002p25nbp01 Filterelement (Papier, 25 Mikron)
Lmp-950-2-B-A-F1-A10-N-P01
Lmp-951-3-B-A-F1-Xxx-P01
Or 3256 O-Ring64.77 X 2.62
Lms-250-A-Fsa-060
Fmm0505bada10np01
Lmp-950-3-B-A-F1-Xxx-P01
Hp-320-1-A10-V-H
Lmp-950-2-B-A-F1-A06-N-P01
Fmp3204bag4m25np01 Filter Druckstutzen

Mf4003a25hb Return Filter Cartridge	
Mf100 3a 25h Bp01	
Gup-P-004	
01 15 025	
Mph6302cdsaf2a25p01+bea14ha50p01 Drain Filter With Indicator.	
Fhb-065-3-B-A-F1-A25-N-P01	
Hp0652a03anp01 Filterelement	
Sgea21m02024fg	
Fhb-320-1-B-A-F1-A10-N-P01	
Sf503m25 Filter	
Fhp-135-2-B-V-G5-Xxx-P01	
PI0701a003ahp01 Filter	
Ch150a25a	
Mf1801a10hbp01 Filterelement	
Fhp-135-2-B-V-G2-Xxx-P01	
Lmp-400-5-B-V-F1-Xxx-P01	
Fhp-135-2-S-A-F1-Xxx-P01	
Akmmo-3p0214	
Lms-250-A-Fsa-042	
Str0702s	
Lmp-900-2-B-A-F1-Xxx-P01	
MP-CS-100-P10-A	Cartridge replacement filters H=177mm, AD=129mm, G1 1/4" 10µm paper element