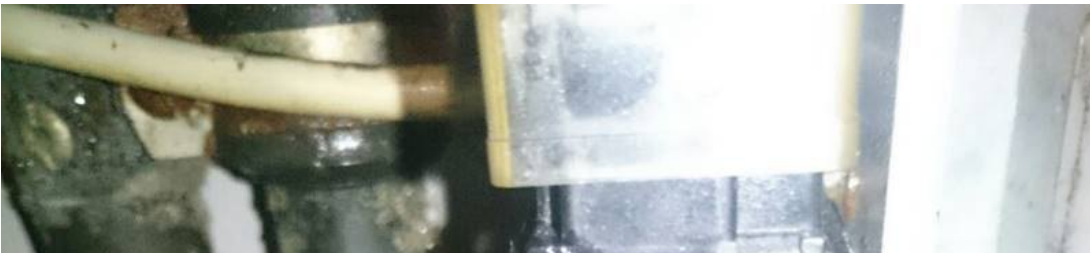


Sika

Garanti: 12 ay
Bu rne ait Trkiye ii kapı teslim fiyat ve teslim sresi ieren teklifimizi almak iin **info@yursat.com.tr** e-posta adresine baŐvuru yapabilir ya da ayrıntılı bilgi iin +90 224 240 03 04 numaralı telefonumuzdan bizlere ulaŐabilirsiniz.
Sika Markası, tedarik sresi iin ltfen bizimle iletiŐime geiniz.

Firmamız Sika Trkiye Distribtr veya temsilcisi deĐildir. Firmamız sipariŐ durumunda, belirtilen rnlerde sadece Orjinal ve yeni rn teklifi sunmaktadır. Bu sitede gsterilen zel marka adları ve ticari markalar ilgili sahiplerinin mlkiyetindedir, talep durumunda kaldırılmaktadır.





¼r¼n	Açıklama
Vhs	
VHS25M01171I51	Brass, SP-S3592 Brass pipe section, G1 internal thread DN 25, PN 25 max. medium temperature 110 ° C Potential-free contact output Device plug + cable socket EN 175301-803-A Position weight: 0.5680 kg
VKS 10 MOP19PI21	
FILTER SONDE SIKA R20 25 CM FOR GAS ANALYSIS	
VKS 10M	
	Turbine flow sensor VTH 15 K5-41, SP-T1242 Pipe piece PPE+PS-GF30

VT1540KBRUKE02	Noryl Turbine Internals PEI Ultem G3/4 external thread DN 15, PN 10 max. medium temperature 85°C Measuring range 2...40 l/min Output 855 pulses / liter, NPN open col. 9-pin D-Sub connector PVC sheathed cable 1500mm
14001430	SIKA Flow switch Flow control switch current monitor VHS 06 M 2P171R21 Flow switch VHS 06 MK, brass Noryl PPO paddle, SP-7447 Brass screw-in stud G1/2" external thread For direct installation in DN 20 ... DN 200 PN 25, max. medium temperature 110°C Output potential-free contact Device plug + cable socket EN 175301-803-A
VHS00M01171R31	Level monitor VHS 00 M Brass, float PVDF, SP-3600 Brass screw-in spigot G3/4 male thread for lateral installation, PN 25 max. medium temperature 110°C Output potential-free contact Device plug + line socket EN 175301-803-A
VHS25M0REGIN05	Flow switch VHS 25 M Brass, SP-3512 Brass pipe piece, G1 internal thread DN 25, PN 40 max. medium temperature 110°C Output potential-free contact Switching point 10.0 - 12.0 l/min Contact opens when the value falls below the limit 4-pin connector M12x1 strengthened construction
VHS25M01171I51	Flow switch VHS 25 M Brass, SP-S3592 Brass pipe piece, G1 internal thread DN 25, PN 25 max. medium temperature 110°C Output potential-free contact Device plug + cable socket EN 175301-803-A
VHS25M01171/51	
VT1541KTRUMP14	Turbine flow sensor VTH 15 K5-41, SP-T2507 Pipe piece PPE+PS-GF30 Noryl Turbine internal parts PEI Ultem G3/4 external thread DN 15, PN 10 max. medium temperature 85°C Measuring range 1.67 - 17 l/min NPN open collector 4-pin connector M12x1
VK306M2P10PR21	Flow switch VK 306 M PPE+PS-GF30 Noryl, SP-S8771 Brass screw-in spigot G1/2 external thread. for direct installation in DN 20...DN 200, PN 10 max. medium temperature 100°C Output potential-free contact PVC sheathed cable 1500 mm Adjustment screw secured with seal label
VKS05M0TRANE01	Flow switch VKS 05 M PPE+PS-GF30 Noryl, SP-S6992 blue union nut G3/4 for direct installation in DN 50, PN 10 max. medium temperature 100°C Output potential-free contact Switching point 0.32 m/s ± 10% Contact opens when the value falls below the limit 4-pin connector M12x1 Auto drain version
EPPM0400BL0000	SIKA pneumatic hand test pump Model: P40.2 Pressure range: -0.95...40 bar Pressure medium: air Reference pressure gauge connection: G1/4 Connection test item: G1/4 including 1 m pressure hose A reference pressure gauge is also required for use as a pressure calibrator needed. Includes transport case with adapters and seal set.
EME8REF-D2-0040	SIKA print reference Type: D2, -1...40 bar Pressure medium: air, gases, liquids Pressure measuring range: -1...40 bar Display: multifunctional LCD display, 50 x 35 mm Function key: ON/OFF,MIN/MAX/FS,MENU/ZERO,RESET/OK Pressure connection: G 1/4 external thread Power supply: 2x1.5 V AA battery Resolution: 0.01bar Accuracy: 0.1% FS +/- 1 digit with rubber protective cap and test certificate
EKDRUCK000000W	Factory test certificate for pressure for pressure reference D2 Measuring range: -1...40 bar
VH600M01111R31	Level monitor VH 600 M Brass, float PVDF, SP-S1181 Brass screw-in spigot G3/4 external thread. for side installation, PN 25 max. medium temperature 110°C Output potential-free contact PVC sheathed cable 1500 mm
AD3004	TURBINENSYSTEM TYPE VTH 15
	Turbine flow sensor VTH 15 K5-41, SP-T1242 Pipe section PPE+PS-GF30

VT1540KBRUKE02	Noryl Turbine internal parts PEI Ultem G3/4 external thread DN 15, PN 10 Max. medium temperature 85°C Measuring range 2...40 l/min Output 855 pulses / liter, NPN open col. 9-pin D-Sub connector PVC sheathed cable 1500mm
VHS 05 M 01171R21	SIKA Flow switch Flow control switch Flow monitor VHS 05 M 01171R21 Flow switch VHS 05 M brass SP-3597 Brass screw-in stud G1/2" external thread For direct installation in DN 50 ... DN 150 PN 25, max. medium temperature 110°C Output potential-free contact Device plug + cable socket EN 175301-803-A with reed contact - max switching capacity 26VA
flow switch (VKS10MOP19I21	
VKS10MOP19P121	
100852	FILTER 851.AM820-DDOP FILTER-FILTER SIKA IS R20 102*ø50/40
VMZ.2 induQ®	
95052487	SIKA flow switch flow control switch Flow monitor VKS 10 M 0P19PI21 Flow switch VKS 10 M PPE+PS-GF30 Noryl, SP-S3763 Brass pipe piece G3/8 internal thread DN 10, PN 10 max. medium temperature 100°C Output potential-free contact Device plug EN 175301-803-A + LED cable socket
TP 28 1300 E	SIKA temperature calibrator 100V-240V 50/60Hz TP 28 1300 E Temperature calibrator SIKA TP281300E Metal block design with serial RS485 interface Temperature range 400°C ...1300°C Test specimen holder 28mm x 200mm Power supply 100V ... 240V 50/60Hz Dimensions approx. 550mm x 415mm x 285mm including accessories
EZ21028065KA00	SIKA transition sleeve EZ21028065KA00 Transition sleeve according to drawing no.: 400/54 353 01.02-6 Diameter: 27.8mm +0.05 Length: 210mm Inner bore 1: 6.5 mm Material: Kanthal/PM2000
VKS10MOP19P121	MAX: 26VA/1A/230V- 26W/1A/48V=T MAX:100C
14007149	SIKA VH500 flow monitor for direct installation VH 500 NMWAERT01 SIKA Paddle Current Monitor VH 500NM Brass, M33x2, SP-5133 with GL type approval from Germanischer Lloyd Maximum operating pressure: 6 bar T-max 100°C For pipes DN25...DN75 Potentially free contact output according to Wrtsil drawing no.: 2-107.268.233 d
96215458	Flow switch VK 320 M VK320M0P10PD11 Flow switch VK 320 M PPE+PS-GF30 Noryl, SP-S0635 Brass threaded nipple D=15mm DN 20, PN 10 Maximum medium temperature 100°C Output potential-free contact PVC sheathed cable 1500 mm red union nut G3/4 Adjustment screw secured with a tamper-evident label
Vmm1ci2111kama41	
Vmm2ci1011gama21	VMM ELECTROMAGNETIC FLOW METER, FLOW RATE 0...4980 GPM, NOMINAL DIAMETER, CONNECTION: ANSI B16.5 150# RF, FLANGE MATERIAL: CARBON STEEL, LINING MATERIA
Xvt2014k (Ex Xvt2014)	
Vmm80i2121gama41	
Vmm3li20	VMM ELECTROMAGNETIC FLOW METER, FLOW RATE, 0...2801 GPM, NOMINAL DIAMETER 6, CONNECTION: ANSI B16.5 150# RF, FLANGE MATERIAL: CARBON STEEL, LINING MAT
Vmmv3i1120kama31	
Vmm80i2111gama41	
Vmm1ci2012gama41	VMM ELECTROMAGNETIC FLOW METER, FLOW RATE 0...1245 GPM, NOMINAL DIAMETER, CONNECTION: ANSI B16.5 150# RF, FLANGE

MATERIAL : STAINLESS STEEL, LINING MATE	
Vmm40i2121kama31	
Vmm2ci1120gama21	VMM ELECTROMAGNETIC FLOW METER, FLOW RATE 0...4980 GPM, NOMINAL DIAMETER 8 CONNECTION: ANSI B16.5 150# RF, FLANGE MATERIAL: CARBON STEEL, LINING MATER
Vmm40i1010kama21	
Vmm3li2021kama31	VMM ELECTROMAGNETIC FLOW METER, FLOW RATE 0...2801 GPM, NOMINAL DIAMETER, CONNECTION: ANSI B16.5 150# RF, FLANGE MATERIAL: STAINLESS STEEL, LINING MATE
Vmm2ci20	VMM ELECTROMAGNETIC FLOW METER, FLOW RATE, 0...4980 GPM, NOMINAL DIAMETER 8, CONNECTION: ANSI B16.5 150# RF, FLANGE MATERIAL: CARBON STEEL, LINING MAT
Apa0100	PRECISION, 0.05% FS, RELATIV (PR)0.100 BAR
Vmm1ci2021gama21	VMM ELECTROMAGNETIC FLOW METER, FLOW RATE 0...1245 GPM, NOMINAL DIAMETER, CONNECTION: ANSI B16.5 150# RF, FLANGE MATERIAL: STAINLESS STEEL, LINING MATE
Vmz08as1deg24cv0	
Vmm2ci2121kama41	VMM ELECTROMAGNETIC FLOW METER, FLOW RATE 0...4980 GPM, NOMINAL DIAMETER 8 CONNECTION: ANSI B16.5 150# RF, FLANGE MATERIAL: STAINLESS STEEL, LINING MA
1570	
Vmm3li2122kama31	VMM ELECTROMAGNETIC FLOW METER, FLOW RATE 0...2801 GPM, NOMINAL DIAMETER 6 CONNECTION: ANSI B16.5 150# RF, FLANGE MATERIAL: STAINLESS STEEL, LINING MA
Vmm50i1022kama21	
Apaa0010	PRECISION, 0.05% FS, RELATIV (PR)(-1)0.10 BAR
Vmm2ci1022gama21	VMM ELECTROMAGNETIC FLOW METER, FLOW RATE 0...4980 GPM, NOMINAL DIAMETER, CONNECTION: ANSI B16.5 150# RF, FLANGE MATERIAL: CARBON STEEL, LINING MATERIA
Bpr0040	PRECISION, 0.025% FS, RELATIV (PR)0.40 BAR
Vmm40i1022kama31	
Vmm2ci1120gama31	VMM ELECTROMAGNETIC FLOW METER, FLOW RATE 0...4980 GPM, NOMINAL DIAMETER 8 CONNECTION: ANSI B16.5 150# RF, FLANGE MATERIAL: CARBON STEEL, LINING MATER
Apa0010	PRECISION, 0.05% FS, RELATIV (PR)(-1)0.10 BAR
Vmm40i2022kama21	
4 Sika Å174; Dilatec Å174; B-Edge !!	
Vmm2ci10	VMM ELECTROMAGNETIC FLOW METER, FLOW RATE, 0...4980 GPM, NOMINAL DIAMETER 8, CONNECTION: ANSI B16.5 150# RF, FLANGE MATERIAL: CARBON STEEL, LINING MAT
Vhs00m03173r33	
Bpaa0004	PRECISION, 0.025% FS, RELATIV (PR)(-1)0.4 BAR
Vmmzpr65a0	
Apr0030	PRECISION, 0.05% FS, RELATIV (PR)(-1)0.30 BAR

Vmmv3i2i21kama41 Ez10018xxxht00	
Vmm32i2021gama31	
Vmm2ci1110gama21	VMM ELECTROMAGNETIC FLOW METER, FLOW RATE 0...4980 GPM, NOMINAL DIAMETER 8 CONNECTION: ANSI B16.5 150# RF, FLANGE MATERIAL: CARBON STEEL, LINING MATER
Vks15m2leybo77	
Vmm32i2111kama21	
Vmm3li2012gama31	VMM ELECTROMAGNETIC FLOW METER, FLOW RATE 0...2801 GPM, NOMINAL DIAMETER, CONNECTION: ANSI B16.5 150# RF, FLANGE MATERIAL: STAINLESS STEEL, LINING MATE
Vmm40i2120kama21	
Vmm50i2022gama31	
Vhso5m-Kunststoff	
Vmm32i1120kama21	
432062	
Tp 17650m	
Bpaa0135	PRECISION, 0.025% FS, RELATIV (PR)0.135 BAR
Cpaa0004	PRECISION, 0.01% FS, RELATIV (PR)(-1)0.4 BAR
Cpa0400	PRECISION, 0.01% FS, RELATIV (PR)0.400 BAR
Vmm3li1112kama21	
Vmm3li1121kama41	
Vhs25m01171/51	
Vmm32i1012gama21	
Vmm65i10	
Vmm50i2110kama41	
Vmmv3i1111gama21	
Vt1540mshnp0a4h	
Vmm65i1022gama41	
Vmm40i2111kama41	
Vmm50i1010kama41	
Vmm1ci21	
Vmmv3i2012gama31	
Vmm1ci1122kama41	
Cpa0200	PRECISION, 0.01% FS, RELATIV (PR)0.200 BAR
233.20.100	
R-100	
Vmm1ci2110gama21	

Vmm32i1022gama41	
Vmm80i2012kama31	
V3025-MS	
Cpr0012	PRECISION, 0.01% FS, RELATIV (PR)(-1)0...12 BAR
Vmm40i1011gama21	
Vz-S5va	
4393	
Vmm3li2020kama41	VMM ELECTROMAGNETIC FLOW METER, FLOW RATE 0....2801 GPM, NOMINAL DIAMETER, CONNECTION: ANSI B16.5 150# RF, FLANGE MATERIAL: STAINLESS STEEL, LINING MATE
Vk305m1ttran15	
Drum Of Antisol-E 15	
Vmm40i1111kama21	
Vmmv3i2122gama41	
Vmm50i2022gama21	
Vmm40i1122gama21	
Vhs06m2p171r21	
Vmm40i20	
Vmm2ci2022gama21	VMM ELECTROMAGNETIC FLOW METER, FLOW RATE 0....4980 GPM, NOMINAL DIAMETER, CONNECTION: ANSI B16.5 150# RF, FLANGE MATERIAL: STAINLESS STEEL, LINING MATE
Vmm3li2111kama31	VMM ELECTROMAGNETIC FLOW METER, FLOW RATE 0....2801 GPM, NOMINAL DIAMETER 6 CONNECTION: ANSI B16.5 150# RF, FLANGE MATERIAL: STAINLESS STEEL, LINING MA
Apr0120	PRECISION, 0.05% FS, RELATIV (PR)0.120 BAR
Vmm40i1021gama41	
Ed825a60	
Vmm2ci1022gama41	VMM ELECTROMAGNETIC FLOW METER, FLOW RATE 0....4980 GPM, NOMINAL DIAMETER, CONNECTION: ANSI B16.5 150# RF, FLANGE MATERIAL: CARBON STEEL, LINING MATERIA
Sikafleks 221 300 MI	
Vmm40i1110gama41	
Vmm50i1120kama41	
Vmm40i1022kama41	
Vhs10m01171i21 90261089	
V1015s01351g3r	
Vmm80i1111gama21	
Cpr0010	PRECISION, 0.01% FS, RELATIV (PR)(-1)0.10 BAR
Apr0012	PRECISION, 0.05% FS, RELATIV (PR)(-1)0...12 BAR

L-10	
Tp17200s	TP SOLID, DRY BLOCK WITH INTERNAL REFERENCE, -55C...200C, +/- 0.2C ACCURACY 100-240 VAC, 50/60HZ
Vz1va	
42 He	
Vmmv3i2121gama31	
Apa0007	PRECISION, 0.05% FS, RELATIV (PR)(-1)0.7 BAR
Vmm32i1121gama21	
Vmm2ci2012kama31	VMM ELECTROMAGNETIC FLOW METER, FLOW RATE 0...4980 GPM, NOMINAL DIAMETER, CONNECTION: ANSI B16.5 150# RF, FLANGE MATERIAL: STAINLESS STEEL, LINING MATE
Vmm50i1120gama31	
Vmm2ci1022gama31	VMM ELECTROMAGNETIC FLOW METER, FLOW RATE 0...4980 GPM, NOMINAL DIAMETER, CONNECTION: ANSI B16.5 150# RF, FLANGE MATERIAL: CARBON STEEL, LINING MATERIA
Vmm2ci1010kama21	VMM ELECTROMAGNETIC FLOW METER, FLOW RATE 0...4980 GPM, NOMINAL DIAMETER, CONNECTION: ANSI B16.5 150# RF, FLANGE MATERIAL: CARBON STEEL, LINING MATERIA
Vmm1ci2010gama31	VMM ELECTROMAGNETIC FLOW METER, FLOW RATE 0...1245 GPM, NOMINAL DIAMETER, CONNECTION: ANSI B16.5 150# RF, FLANGE MATERIAL: STAINLESS STEEL, LINING MATE
Vmm32i2022gama41	
Vmm65i2020gama31	
Vmm2ci1011kama21	VMM ELECTROMAGNETIC FLOW METER, FLOW RATE 0...4980 GPM, NOMINAL DIAMETER, CONNECTION: ANSI B16.5 150# RF, FLANGE MATERIAL: CARBON STEEL, LINING MATERIA
Vmm40i2110gama41	
Vmmzewv3a0	
Vmmv3i1122kama21	
Vmm2ci1112gama21	VMM ELECTROMAGNETIC FLOW METER, FLOW RATE 0...4980 GPM, NOMINAL DIAMETER 8 CONNECTION: ANSI B16.5 150# RF, FLANGE MATERIAL: CARBON STEEL, LINING MATER
Vmm3li2111kama41	VMM ELECTROMAGNETIC FLOW METER, FLOW RATE 0...2801 GPM, NOMINAL DIAMETER 6 CONNECTION: ANSI B16.5 150# RF, FLANGE MATERIAL: STAINLESS STEEL, LINING MA
Vmm40i1011kama41	
VKS 10 M 0P17PI21-	SIKA Flow switch Flow control switch Flow monitor Flow switch VKS 10 M PPE+PS-GF30 Noryl, SP-S3627 Brass pipe section G3/8 internal thread DN 10, PN 10 Maximum medium temperature 100°C Output potential-free contact Device plug + cable socket EN 175301-803-A 95017363
Fqm150	
2722101110031	
Vmm3li1112gama41	VMM ELECTROMAGNETIC FLOW METER, FLOW RATE 0...2801 GPM, NOMINAL DIAMETER 6 CONNECTION: ANSI B16.5 150# RF, FLANGE MATERIAL: CARBON STEEL, LINING MATER
Vmm50i2121kama21	

Vmm50i2020gama41	
Vmm65i2021kama21	
Vmm65i2010kama31	
Cpaa0300	PRECISION, 0.01% FS, RELATIV (PR)0.300 BAR
Vmm32i1110gama21	
Vmm3li1012gama41	VMM ELECTROMAGNETIC FLOW METER, FLOW RATE 0...2801 GPM, NOMINAL DIAMETER, CONNECTION: ANSI B16.5 150# RF, FLANGE MATERIAL: CARBON STEEL, LINING MATERIA
Vmm65i2111gama21	
Vmm1ci1011kama21	
Vmm2ci1012kama41	VMM ELECTROMAGNETIC FLOW METER, FLOW RATE 0...4980 GPM, NOMINAL DIAMETER, CONNECTION: ANSI B16.5 150# RF, FLANGE MATERIAL: CARBON STEEL, LINING MATERIA
Bpa0135	PRECISION, 0.025% FS, RELATIV (PR)0.135 BAR
Vmm32i2120kama21	
Bpa0020	PRECISION, 0.025% FS, RELATIV (PR)(-1)0.20 BAR
Vmmv3i2021gama21	
VKS10M0P17PI21	Flow switch VKS 10 M PPE+PS-GF30 Noryl, SP-S3627 Brass pipe piece G3/8 internal thread DN 10, PN 10 max. medium temperature 100°C Output potential-free contact Device plug + line socket EN 175301-803-A Weight of item : 0.2670 kg
Vmm3li2022gama41	VMM ELECTROMAGNETIC FLOW METER, FLOW RATE 0...2801 GPM, NOMINAL DIAMETER, CONNECTION: ANSI B16.5 150# RF, FLANGE MATERIAL: STAINLESS STEEL, LINING MATE
Vmm3li2010gama31	VMM ELECTROMAGNETIC FLOW METER, FLOW RATE 0...2801 GPM, NOMINAL DIAMETER, CONNECTION: ANSI B16.5 150# RF, FLANGE MATERIAL: STAINLESS STEEL, LINING MATE
Vmm3li1122gama31	VMM ELECTROMAGNETIC FLOW METER, FLOW RATE 0...2801 GPM, NOMINAL DIAMETER 6 CONNECTION: ANSI B16.5 150# RF, FLANGE MATERIAL: CARBON STEEL, LINING MATER
Vmm2ci2010gama31	VMM ELECTROMAGNETIC FLOW METER, FLOW RATE 0...4980 GPM, NOMINAL DIAMETER, CONNECTION: ANSI B16.5 150# RF, FLANGE MATERIAL: STAINLESS STEEL, LINING MATE
Vt1540kbruke02	
Bpa0060	PRECISION, 0.025% FS, RELATIV (PR)0...60 BAR
Vmmv3i2121gama41	
Vvxbben2ubu1251e	
Analogoutput-4...20maor0...10vdc	
Vsapps	
Glf401	
Vmm1ci1112kama41	
Vmm3li2010kama41	VMM ELECTROMAGNETIC FLOW METER, FLOW RATE 0...2801 GPM, NOMINAL DIAMETER, CONNECTION: ANSI B16.5 150# RF, FLANGE

	MATERIAL: STAINLESS STEEL, LINING MATE
Vmm40i2021gama41	
Vmm2ci1022kama21	VMM ELECTROMAGNETIC FLOW METER, FLOW RATE 0...4980 GPM, NOMINAL DIAMETER, CONNECTION: ANSI B16.5 150# RF, FLANGE MATERIAL: CARBON STEEL, LINING MATERIA
Vmm1ci10	
Vvxaaen1ua00121c	
L-200	
Vmm2ci1121gama41	VMM ELECTROMAGNETIC FLOW METER, FLOW RATE 0...4980 GPM, NOMINAL DIAMETER 8 CONNECTION: ANSI B16.5 150# RF, FLANGE MATERIAL: CARBON STEEL, LINING MATER
Vhs01m0117d13	
R38	
Vmm3li2112gama31	VMM ELECTROMAGNETIC FLOW METER, FLOW RATE 0...2801 GPM, NOMINAL DIAMETER 6 CONNECTION: ANSI B16.5 150# RF, FLANGE MATERIAL: STAINLESS STEEL, LINING MA
Type D2, -1 To 40 Bar	
Vmm2ci1120kama41	VMM ELECTROMAGNETIC FLOW METER, FLOW RATE 0...4980 GPM, NOMINAL DIAMETER 8 CONNECTION: ANSI B16.5 150# RF, FLANGE MATERIAL: CARBON STEEL, LINING MATER
Apa0070	PRECISION, 0.05% FS, RELATIV (PR)0.70 BAR
Vmm1ci1122gama31	
Sikaflex 11 Fc+ Fb 600 MI (1x20)	
Vhs20m0ipsen02	
Vmm65i1121kama21	
Vmm1ci2010kama41	
Vvxbbeg20000151e	
Vmm3li2021gama21	VMM ELECTROMAGNETIC FLOW METER, FLOW RATE 0...2801 GPM, NOMINAL DIAMETER, CONNECTION: ANSI B16.5 150# RF, FLANGE MATERIAL: STAINLESS STEEL, LINING MATE
Vmm50i11	
Vhs01m2kelvi04	
Vmm3li1121kama31	
Bpa0200	PRECISION, 0.025% FS, RELATIV (PR)0.200 BAR
Vmmv3i1010gama31	
Vmm1ci1011kama41	
Vmm32i2020kama21	
Vmm80i1011gama41	
Vmmv3i2111kama31	
Vmm40i1012gama21	
Vmm50i2110kama21	

Ectc	
Vth15 K5-41 - Turbinen-Durchflusssensor	
Vmm50i2112gama41	
Cpaa0030	PRECISION, 0.01% FS, RELATIV (PR)(-1)0.30 BAR
Vmm65i2111kama31	
528950	
Softwareatacalforucrt/Uctc	
538743 , Sikafloor-264 (??) (30 Kg Pack)	
Vmm2ci2111kama21	VMM ELECTROMAGNETIC FLOW METER, FLOW RATE 0...4980 GPM, NOMINAL DIAMETER 8 CONNECTION: ANSI B16.5 150# RF, FLANGE MATERIAL: STAINLESS STEEL, LINING MA
Vmm32i2122gama31	
R-20	
Vvxaaeg10000151c	
Vmm1ci2121kama31	VMM ELECTROMAGNETIC FLOW METER, FLOW RATE 0...1245 GPM, NOMINAL DIAMETER 4 CONNECTION: ANSI B16.5 150# RF, FLANGE MATERIAL: STAINLESS STEEL, LINING MA
Cpa0020	PRECISION, 0.01% FS, RELATIV (PR)(-1)0.20 BAR
Vmm50i1021gama41	
Vmm40i1111kama41	
Vmm32i1020kama31	
Apr0200	PRECISION, 0.05% FS, RELATIV (PR)0.200 BAR
Vmm2ci1020kama31	VMM ELECTROMAGNETIC FLOW METER, FLOW RATE 0...4980 GPM, NOMINAL DIAMETER, CONNECTION: ANSI B16.5 150# RF, FLANGE MATERIAL: CARBON STEEL, LINING MATERIA
Apa0004	PRECISION, 0.05% FS, RELATIV (PR)(-1)0.4 BAR
Vmm65i1120kama41	
Vmm80i1021gama31	
Vmm3li2022kama31	VMM ELECTROMAGNETIC FLOW METER, FLOW RATE 0...2801 GPM, NOMINAL DIAMETER, CONNECTION: ANSI B16.5 150# RF, FLANGE MATERIAL: STAINLESS STEEL, LINING MATE
0 50 C 0 120 F	
Vt1541krofin05	
Vmm3li2021gama31	VMM ELECTROMAGNETIC FLOW METER, FLOW RATE 0...2801 GPM, NOMINAL DIAMETER, CONNECTION: ANSI B16.5 150# RF, FLANGE MATERIAL: STAINLESS STEEL, LINING MATE
Vmm3li1110gama41	
Tp17165m	TP BASIC, DRY BLOCK WITH INTERNAL REFERENCE, -35C...165C, +/- 1C ACCURACY, ACCURACY 100...240VAC, 50/60 HZ
Vmm80i1022gama41	
	MULTIFUNCTION CALIBRATORS, RESISTANCE 0.400 O / 0...4000 O, TYPE

Mc75	B / U / L / N / E, VOLTAGE: 0.100 MV / 0...10 V / 25 V / 50 V, 1...100 HZ / 1...1
Vmm2ci2022gama31	VMM ELECTROMAGNETIC FLOW METER, FLOW RATE 0...4980 GPM, NOMINAL DIAMETER, CONNECTION: ANSI B16.5 150# RF, FLANGE MATERIAL: STAINLESS STEEL, LINING MATE
Vmm3li1011kama31	VMM ELECTROMAGNETIC FLOW METER, FLOW RATE 0...2801 GPM, NOMINAL DIAMETER, CONNECTION: ANSI B16.5 150# RF, FLANGE MATERIAL: CARBON STEEL, LINING MATERIA
Bpa0700	PRECISION, 0.025% FS, RELATIV (PR)0.700 BAR
Vmm2ci2021kama41	VMM ELECTROMAGNETIC FLOW METER, FLOW RATE 0...4980 GPM, NOMINAL DIAMETER, CONNECTION: ANSI B16.5 150# RF, FLANGE MATERIAL: STAINLESS STEEL, LINING MATE
Vmm65i1012kama21	
Type D2, -1 To 60 Bar	
Cpa0030	PRECISION, 0.01% FS, RELATIV (PR)(-1)0.30 BAR
Vmm1ci2111gama21	VMM ELECTROMAGNETIC FLOW METER, FLOW RATE 0...1245 GPM, NOMINAL DIAMETER 4 CONNECTION: ANSI B16.5 150# RF, FLANGE MATERIAL: STAINLESS STEEL, LINING MA
Apr0004	PRECISION, 0.05% FS, RELATIV (PR)(-1)0.4 BAR
Vmmv3i2022kama41	
Vmm3li2112kama31	VMM ELECTROMAGNETIC FLOW METER, FLOW RATE 0...2801 GPM, NOMINAL DIAMETER 6 CONNECTION: ANSI B16.5 150# RF, FLANGE MATERIAL: STAINLESS STEEL, LINING MA
Tlk43	
Vmm3li1111gama31	
Vhs 32 M	
Vmm80i2120gama31	
Bpr0070	PRECISION, 0.025% FS, RELATIV (PR)0.70 BAR
Vmm3li1022gama31	VMM ELECTROMAGNETIC FLOW METER, FLOW RATE 0...2801 GPM, NOMINAL DIAMETER, CONNECTION: ANSI B16.5 150# RF, FLANGE MATERIAL: CARBON STEEL, LINING MATERIA
Vmm2ci1111gama31	VMM ELECTROMAGNETIC FLOW METER, FLOW RATE 0...4980 GPM, NOMINAL DIAMETER 8 CONNECTION: ANSI B16.5 150# RF, FLANGE MATERIAL: CARBON STEEL, LINING MATER
Vmm2ci2012gama31	VMM ELECTROMAGNETIC FLOW METER, FLOW RATE 0...4980 GPM, NOMINAL DIAMETER, CONNECTION: ANSI B16.5 150# RF, FLANGE MATERIAL: STAINLESS STEEL, LINING MATE
Tpm225s-U	TP SOLID, MULT-FUNCTION TEMPERATURE CALIBRATOR,RT...225C, +/- 0.2/0.4/0.5C ACCURACY, 90-240 VAC, 50/60HZ
Vmm50i2012gama41	
Vmm80i1022kama21	
Cpa0007	PRECISION, 0.01% FS, RELATIV (PR)(-1)0.7 BAR
Bpa0400	PRECISION, 0.025% FS, RELATIV (PR)0.400 BAR
Bpr0012	PRECISION, 0.025% FS, RELATIV (PR)(-1)0...12 BAR

P60	
Vmm65i1010kama41	
Vmm3li1012gama31	VMM ELECTROMAGNETIC FLOW METER, FLOW RATE 0...2801 GPM, NOMINAL DIAMETER, CONNECTION: ANSI B16.5 150# RF, FLANGE MATERIAL: CARBON STEEL, LINING MATERIA
271510112158a1	
Vmm1ci1022gama31	VMM ELECTROMAGNETIC FLOW METER, FLOW RATE 0...1245 GPM, NOMINAL DIAMETER, CONNECTION: ANSI B16.5 150# RF, FLANGE MATERIAL: CARBON STEEL, LINING MATERIA
R-2000	
Vmm2ci2111gama21	VMM ELECTROMAGNETIC FLOW METER, FLOW RATE 0...4980 GPM, NOMINAL DIAMETER 8 CONNECTION: ANSI B16.5 150# RF, FLANGE MATERIAL: STAINLESS STEEL, LINING MA
Vmmzpr40a0	
Vmm1ci2021kama41	VMM ELECTROMAGNETIC FLOW METER, FLOW RATE 0...1245 GPM, NOMINAL DIAMETER, CONNECTION: ANSI B16.5 150# RF, FLANGE MATERIAL: STAINLESS STEEL, LINING MATE
Vth15k5-11	
Vmm80i1120kama31	
2136	
Vmm80i2110kama31	
Vmm40i2011gama21	
Vmm1ci1020kama41	
Tlk43hvcrr-Sk100-240vac	
Vmm65i1011kama31	
Vmmv3i1120gama31	
Vmm3li1011kama41	VMM ELECTROMAGNETIC FLOW METER, FLOW RATE 0...2801 GPM, NOMINAL DIAMETER, CONNECTION: ANSI B16.5 150# RF, FLANGE MATERIAL: CARBON STEEL, LINING MATERIA
Sikaã174; Geotextile !!	
Vmm3li1021gama21	VMM ELECTROMAGNETIC FLOW METER, FLOW RATE 0...2801 GPM, NOMINAL DIAMETER, CONNECTION: ANSI B16.5 150# RF, FLANGE MATERIAL: CARBON STEEL, LINING MATERIA
Vhs05m1971z21	
Transportcasegkk3600	
Vmm65i2121gama31	
Vmm65i1012kama41	
Vmm2ci2112kama41	VMM ELECTROMAGNETIC FLOW METER, FLOW RATE 0...4980 GPM, NOMINAL DIAMETER 8 CONNECTION: ANSI B16.5 150# RF, FLANGE MATERIAL: STAINLESS STEEL, LINING MA
Vtr 1015	
Vvxbbeg2rrm151e	
	VMM ELECTROMAGNETIC FLOW METER, FLOW RATE 0...4980 GPM,

Vmm2ci2010gama21	NOMINAL DIAMETER, CONNECTION: ANSI B16.5 150# RF, FLANGE MATERIAL: STAINLESS STEEL, LINING MATE
Vmmv3i1122kama41	
Vmm2ci2121gama31	VMM ELECTROMAGNETIC FLOW METER, FLOW RATE 0...4980 GPM, NOMINAL DIAMETER 8 CONNECTION: ANSI B16.5 150# RF, FLANGE MATERIAL: STAINLESS STEEL, LINING MA
Vz-S1gg	
Vmmv3i2011kama41	
Vmmv3i2121kama21	
Vmm3li2020gama41	VMM ELECTROMAGNETIC FLOW METER, FLOW RATE 0...2801 GPM, NOMINAL DIAMETER, CONNECTION: ANSI B16.5 150# RF, FLANGE MATERIAL: STAINLESS STEEL, LINING MATE
Vmm65i2020gama21	
Software	
Sme8c031tk250ki7	
Bpa0007	PRECISION, 0.025% FS, RELATIV (PR)(-1)0.7 BAR
Xvt2053	
Vmm50i1011kama31	
Vmm2ci2020kama41	VMM ELECTROMAGNETIC FLOW METER, FLOW RATE 0...4980 GPM, NOMINAL DIAMETER, CONNECTION: ANSI B16.5 150# RF, FLANGE MATERIAL: STAINLESS STEEL, LINING MATE
Vmm50i2120kama41	
Apa0004	PRECISION, 0.05% FS, RELATIV (PR)(-1)0.4 BAR
Vmm1ci2022gama21	VMM ELECTROMAGNETIC FLOW METER, FLOW RATE 0...1245 GPM, NOMINAL DIAMETER, CONNECTION: ANSI B16.5 150# RF, FLANGE MATERIAL: STAINLESS STEEL, LINING MATE
Vmmv3i2011gama31	
Vmm3li1010gama31	VMM ELECTROMAGNETIC FLOW METER, FLOW RATE 0...2801 GPM, NOMINAL DIAMETER, CONNECTION: ANSI B16.5 150# RF, FLANGE MATERIAL: CARBON STEEL, LINING MATERIA
Vmm2ci1010gama31	VMM ELECTROMAGNETIC FLOW METER, FLOW RATE 0...4980 GPM, NOMINAL DIAMETER, CONNECTION: ANSI B16.5 150# RF, FLANGE MATERIAL: CARBON STEEL, LINING MATERIA
Vmmv3i1111gama31	
Vmm80i1020kama31	
Cpa0012	PRECISION, 0.01% FS, RELATIV (PR)(-1)0...12 BAR
Vmmzew80a0	
Bpa0070	PRECISION, 0.025% FS, RELATIV (PR)0.70 BAR
Vmm50i1122kama41	
Vmmzsc000z0010	
Vmm80i2020gama21	
Vmm50i1010gama31	

Vmm2ci2120kama41	VMM ELECTROMAGNETIC FLOW METER, FLOW RATE 0...4980 GPM, NOMINAL DIAMETER 8 CONNECTION: ANSI B16.5 150# RF, FLANGE MATERIAL: STAINLESS STEEL, LINING MA
Vvxbbeg2rrrp121e	
Vmm40i2110gama31	
Vmm1ci1120gama21	
Vhs00m01181r31	
Vmm80i1111kama31	
Vmm3li1021kama31	VMM ELECTROMAGNETIC FLOW METER, FLOW RATE 0...2801 GPM, NOMINAL DIAMETER, CONNECTION: ANSI B16.5 150# RF, FLANGE MATERIAL: CARBON STEEL, LINING MATERIA
Vhs-05-M - Vks 06	
Vmm3li1011kama21	VMM ELECTROMAGNETIC FLOW METER, FLOW RATE 0...2801 GPM, NOMINAL DIAMETER, CONNECTION: ANSI B16.5 150# RF, FLANGE MATERIAL: CARBON STEEL, LINING MATERIA
Vhs06m	
Apr0020	PRECISION, 0.05% FS, RELATIV (PR)(-1)0.20 BAR
Vmm80i2121gama21	
Vmm1ci1121gama31	
Vmm2ci2010kama31	VMM ELECTROMAGNETIC FLOW METER, FLOW RATE 0...4980 GPM, NOMINAL DIAMETER, CONNECTION: ANSI B16.5 150# RF, FLANGE MATERIAL: STAINLESS STEEL, LINING MATE
Vmm40i1022gama41	
Vmm80i2111kama21	
Tp37165e	TP PREMIUM, DRY BLOCK TEMPERATURE CALIBRATOR,-35C...165C, +/- 0.2C ACCURACY, 100-240 VAC, 50/60HZ
Vmm32i1011gama41	
Vmm3li2122kama41	VMM ELECTROMAGNETIC FLOW METER, FLOW RATE 0...2801 GPM, NOMINAL DIAMETER 6 CONNECTION: ANSI B16.5 150# RF, FLANGE MATERIAL: STAINLESS STEEL, LINING MA
Vmm1ci2012kama21	VMM ELECTROMAGNETIC FLOW METER, FLOW RATE 0...1245 GPM, NOMINAL DIAMETER, CONNECTION: ANSI B16.5 150# RF, FLANGE MATERIAL: STAINLESS STEEL, LINING MATE
Vmm80i1120kama21	
Apr0300	PRECISION, 0.05% FS, RELATIV (PR)0.300 BAR
Vmm80i2121kama31	
Vmm32i1022kama21	
Vmm40i1121kama31	
Bpr0700	PRECISION, 0.025% FS, RELATIV (PR)0.700 BAR
Vmm80i1021gama41	
Vmm2ci2121gama41	VMM ELECTROMAGNETIC FLOW METER, FLOW RATE 0...4980 GPM, NOMINAL DIAMETER 8 CONNECTION: ANSI B16.5 150# RF, FLANGE MATERIAL: STAINLESS STEEL, LINING MA

Vmm32i1111gama41	
Vmm65i1022gama31	
Apa0400	PRECISION, 0.05% FS, RELATIV (PR)0.400 BAR
Vmm32i1122kama31	
Apr0060	PRECISION, 0.05% FS, RELATIV (PR)0...60 BAR
Art. Nr. Ep18850e181000, Type Tp 18850 E	
Vmm3li2011kama31	VMM ELECTROMAGNETIC FLOW METER, FLOW RATE 0...2801 GPM, NOMINAL DIAMETER, CONNECTION: ANSI B16.5 150# RF, FLANGE MATERIAL: STAINLESS STEEL, LINING MATE
Vmm65i2122kama21	
Vh 305	
Vmm1ci1021gama41	
Wkb8210000f	
Vmm2ci2021kama21	VMM ELECTROMAGNETIC FLOW METER, FLOW RATE 0...4980 GPM, NOMINAL DIAMETER, CONNECTION: ANSI B16.5 150# RF, FLANGE MATERIAL: STAINLESS STEEL, LINING MATE
Bpr0400	PRECISION, 0.025% FS, RELATIV (PR)0.400 BAR
Vz-S3gg	
750x500x100	
Vmm3li1122gama21	VMM ELECTROMAGNETIC FLOW METER, FLOW RATE 0...2801 GPM, NOMINAL DIAMETER 6 CONNECTION: ANSI B16.5 150# RF, FLANGE MATERIAL: CARBON STEEL, LINING MATER
Vmm80i2020gama41	
Tp17166s	TP SOLID, MULT-FUNCTION TEMPERATURE CALIBRATOR, -35C...165C, +/- 0.2/0.5C ACCURACY, 100-240 VAC, 50/60HZ
Vmm65i1111kama41	
2226	
Vmm80i2111gama31	
Vmm2ci1112gama31	VMM ELECTROMAGNETIC FLOW METER, FLOW RATE 0...4980 GPM, NOMINAL DIAMETER 8 CONNECTION: ANSI B16.5 150# RF, FLANGE MATERIAL: CARBON STEEL, LINING MATER
Vmm3li1111gama41	
Vmmv3i1110gama31	
Vmm80i2122gama31	
Vmm32i2022gama31	
Cpr1000	PRECISION, 0.01% FS, RELATIV (PR)0.1000 BAR
Vks10m0p19pl21	
Cpr0700	PRECISION, 0.01% FS, RELATIV (PR)0.700 BAR
Vmm50i1110gama31	
Vmm2ci1020kama21	VMM ELECTROMAGNETIC FLOW METER, FLOW RATE 0...4980 GPM, NOMINAL DIAMETER, CONNECTION: ANSI B16.5 150# RF, FLANGE

	MATERIAL: CARBON STEEL, LINING MATERIA
Vmm50i1112kama41	
Vmm80i1121kama21	
Cpa0160	PRECISION, 0.01% FS, RELATIV (PR)0.160 BAR
Vmz08as1peg14cv0	
Vmmv3i2122gama31	
Vmm40i1121gama41	
10.06.0037 (7380024)	
Vmm40i2122kama41	
Vmm1ci1010gama41	
Vmm1ci2012kama31	VMM ELECTROMAGNETIC FLOW METER, FLOW RATE 0....1245 GPM, NOMINAL DIAMETER, CONNECTION: ANSI B16.5 150# RF, FLANGE MATERIAL: STAINLESS STEEL, LINING MATE
Vz0.4gg	
Vvxaaep10000221c	
Vmm3li2122kama21	VMM ELECTROMAGNETIC FLOW METER, FLOW RATE 0....2801 GPM, NOMINAL DIAMETER 6 CONNECTION: ANSI B16.5 150# RF, FLANGE MATERIAL: STAINLESS STEEL, LINING MA
Vmm32i1020gama41	
Vmm1ci1011gama41	
Vmm1ci1120kama31	
Vmm1ci2110kama41	
Vmmv3i2122kama21	
Vmm40i1120gama41	
Bpaa0012	PRECISION, 0.025% FS, RELATIV (PR)(-1)0...12 BAR
Type: 192b	
Vmm2ci1021gama21	VMM ELECTROMAGNETIC FLOW METER, FLOW RATE 0....4980 GPM, NOMINAL DIAMETER, CONNECTION: ANSI B16.5 150# RF, FLANGE MATERIAL: CARBON STEEL, LINING MATERIA
Vmm3li2012gama41	VMM ELECTROMAGNETIC FLOW METER, FLOW RATE 0....2801 GPM, NOMINAL DIAMETER, CONNECTION: ANSI B16.5 150# RF, FLANGE MATERIAL: STAINLESS STEEL, LINING MATE
Vmm1ci1011gama21	
Vhs 00 M Va	
Vz004alv31k00s	
Vt1331	
Transportcasegk3100	
Bpa0030	PRECISION, 0.025% FS, RELATIV (PR)(-1)0.30 BAR
Vz-S0.04gg	
Vmm32i1012gama31	

Vmm2ci2121gama21	VMM ELECTROMAGNETIC FLOW METER, FLOW RATE 0...4980 GPM, NOMINAL DIAMETER 8 CONNECTION: ANSI B16.5 150# RF, FLANGE MATERIAL: STAINLESS STEEL, LINING MA
L-1000	
Vmmv3i2010kama41	
Vmm1ci2020kama31	
Vmm32i11	
Tp17650m	TP BASIC, DRY BLOCK WITH INTERNAL REFERENCE RT...650C, +/- 1C ACCURACY 90.240 VAC, 50/60HZ
Vmm1ci1111gama31	
174-2-10-2-1-100-2-1	
Vmm1ci2111gama41	VMM ELECTROMAGNETIC FLOW METER, FLOW RATE 0...1245 GPM, NOMINAL DIAMETER 4 CONNECTION: ANSI B16.5 150# RF, FLANGE MATERIAL: STAINLESS STEEL, LINING MA
Vmm65i2011gama21	
Vmm2ci2011kama21	VMM ELECTROMAGNETIC FLOW METER, FLOW RATE 0...4980 GPM, NOMINAL DIAMETER, CONNECTION: ANSI B16.5 150# RF, FLANGE MATERIAL: STAINLESS STEEL, LINING MATE
Vmm65i2111kama21	
Vt1541mshns0a406	
Vmm1ci1022gama41	VMM ELECTROMAGNETIC FLOW METER, FLOW RATE 0...1245 GPM, NOMINAL DIAMETER, CONNECTION: ANSI B16.5 150# RF, FLANGE MATERIAL: CARBON STEEL, LINING MATERIA
Vmm1ci2022kama21	VMM ELECTROMAGNETIC FLOW METER, FLOW RATE 0...1245 GPM, NOMINAL DIAMETER, CONNECTION: ANSI B16.5 150# RF, FLANGE MATERIAL: STAINLESS STEEL, LINING MATE
Vt1541ktrump14	
Vmm80i2021kama21	
Apa0300	PRECISION, 0.05% FS, RELATIV (PR)0.300 BAR
Vmm2ci2010gama41	VMM ELECTROMAGNETIC FLOW METER, FLOW RATE 0...4980 GPM, NOMINAL DIAMETER, CONNECTION: ANSI B16.5 150# RF, FLANGE MATERIAL: STAINLESS STEEL, LINING MATE
Vmm80i2022kama41	
Sme8c051tk100ki6	
1c56150365	
Vmm65i2022kama41	
Cpr0100	PRECISION, 0.01% FS, RELATIV (PR)0.100 BAR
Vmm2ci1110gama31	VMM ELECTROMAGNETIC FLOW METER, FLOW RATE 0...4980 GPM, NOMINAL DIAMETER 8 CONNECTION: ANSI B16.5 150# RF, FLANGE MATERIAL: CARBON STEEL, LINING MATER
Vmm32i1111kama21	
Vt2511khutti29	
Vvxb bep20000251e	

780102	
Sikalastic 200w	
Vmm3li2110gama41	VMM ELECTROMAGNETIC FLOW METER, FLOW RATE 0...2801 GPM, NOMINAL DIAMETER 6 CONNECTION: ANSI B16.5 150# RF, FLANGE MATERIAL: STAINLESS STEEL, LINING MA
Vhs 00 M Ms	
Vmmv3i2011gama41	
Vmm2ci2022kama21	VMM ELECTROMAGNETIC FLOW METER, FLOW RATE 0...4980 GPM, NOMINAL DIAMETER, CONNECTION: ANSI B16.5 150# RF, FLANGE MATERIAL: STAINLESS STEEL, LINING MATE
Vhs25m01171i51	
Apa0020	PRECISION, 0.05% FS, RELATIV (PR)(-1)0.20 BAR
Vmm2ci21	VMM ELECTROMAGNETIC FLOW METER, FLOW RATE 0...4980 GPM, NOMINAL DIAMETER 8 CONNECTION: ANSI B16.5 150# RF, FLANGE MATERIAL: STAINLESS STEEL, LINING MA
Vmm40i1110kama41	
Vmm2ci2110gama31	VMM ELECTROMAGNETIC FLOW METER, FLOW RATE 0...4980 GPM, NOMINAL DIAMETER 8 CONNECTION: ANSI B16.5 150# RF, FLANGE MATERIAL: STAINLESS STEEL, LINING MA
Vmz08as1deg14ey0	
Vmm50i2022kama21	
Vmm40i2121gama41	
Vmm2ci2020kama31	VMM ELECTROMAGNETIC FLOW METER, FLOW RATE 0...4980 GPM, NOMINAL DIAMETER, CONNECTION: ANSI B16.5 150# RF, FLANGE MATERIAL: STAINLESS STEEL, LINING MATE
Vmm80i1010gama21	
Vt1540mshns0a406+xvt2053	
Vvxbben2ub00251e	
Vvxaaen1ua00221c	
Vmi0720k7cpt0n3	
Pm40d	
Vmm3li2012kama21	VMM ELECTROMAGNETIC FLOW METER, FLOW RATE 0...2801 GPM, NOMINAL DIAMETER, CONNECTION: ANSI B16.5 150# RF, FLANGE MATERIAL: STAINLESS STEEL, LINING MATE
Vmm32i1022gama21	
Tp281300	TP PREMIUM, DRY BLOCK WITH INTERNAL REFERENCE, 400C...1300C, +/- 2C ACCURACY, 230 VAC, 50/60HZ
Vmm1ci1110gama21	
Apa0012	PRECISION, 0.05% FS, RELATIV (PR)(-1)0...12 BAR
Vmm32i1111kama31	
Vmm40i2112kama41	
Vz020alv31i00s	

D-Ex-3	
Vmmv3i1010kama21	
Vmm2ci11	
Vmm3li1121gama31	VMM ELECTROMAGNETIC FLOW METER, FLOW RATE 0...2801 GPM, NOMINAL DIAMETER 6 CONNECTION: ANSI B16.5 150# RF, FLANGE MATERIAL: CARBON STEEL, LINING MATER
Vmm65i1122gama41	
Vmm32i1021gama31	
Vmm32i2012gama41	
Vmm50i1112kama31	
Vmm1ci1111gama21	
Vmm3li1122gama41	VMM ELECTROMAGNETIC FLOW METER, FLOW RATE 0...2801 GPM, NOMINAL DIAMETER 6 CONNECTION: ANSI B16.5 150# RF, FLANGE MATERIAL: CARBON STEEL, LINING MATER
Vmm65i1120kama31	
Vmm50i2121kama41	
Vmmv3i1021gama31	
Vmm80i1121kama41	
Apr0135	PRECISION, 0.05% FS, RELATIV (PR)0.135 BAR
Vmm40i2022gama21	
Vs2575va0000a5	
Vmm32i2121kama21	
Vmm80i1021kama31	
Vmm2ci1121gama21	VMM ELECTROMAGNETIC FLOW METER, FLOW RATE 0...4980 GPM, NOMINAL DIAMETER 8 CONNECTION: ANSI B16.5 150# RF, FLANGE MATERIAL: CARBON STEEL, LINING MATER
Vmm1ci1010gama31	
Apr0400	PRECISION, 0.05% FS, RELATIV (PR)0.400 BAR
Tp17200	TP BASIC, DRY BLOCK WITH INTERNAL REFERENCE, -55C...200C, +/- 0.4C ACCURACY, 100...240 VAC, 50/60HZ
Vmm80i1121gama31	
Vmm40i2021gama31	
Bpaa0020	PRECISION, 0.025% FS, RELATIV (PR)(-1)0.20 BAR
Vmm65i1021gama21	
Vmm3li2011kama21	VMM ELECTROMAGNETIC FLOW METER, FLOW RATE 0...2801 GPM, NOMINAL DIAMETER, CONNECTION: ANSI B16.5 150# RF, FLANGE MATERIAL: STAINLESS STEEL, LINING MATE
Bpr0010	PRECISION, 0.025% FS, RELATIV (PR)(-1)0.10 BAR
Vmm1ci2021gama31	VMM ELECTROMAGNETIC FLOW METER, FLOW RATE 0...1245 GPM, NOMINAL DIAMETER, CONNECTION: ANSI B16.5 150# RF, FLANGE MATERIAL: STAINLESS STEEL, LINING MATE

Vmm2ci2110kama31	VMM ELECTROMAGNETIC FLOW METER, FLOW RATE 0...4980 GPM, NOMINAL DIAMETER 8 CONNECTION: ANSI B16.5 150# RF, FLANGE MATERIAL: STAINLESS STEEL, LINING MA
Vmm2ci2011gama41	VMM ELECTROMAGNETIC FLOW METER, FLOW RATE 0...4980 GPM, NOMINAL DIAMETER, CONNECTION: ANSI B16.5 150# RF, FLANGE MATERIAL: STAINLESS STEEL, LINING MATE
Vmm40i2012gama21	
Vmmv3i1022kama41	
Vmm3li1022kama21	VMM ELECTROMAGNETIC FLOW METER, FLOW RATE 0...2801 GPM, NOMINAL DIAMETER, CONNECTION: ANSI B16.5 150# RF, FLANGE MATERIAL: CARBON STEEL, LINING MATERIA
Vmm65i2121kama21	
Vmm1ci2012gama31	VMM ELECTROMAGNETIC FLOW METER, FLOW RATE 0...1245 GPM, NOMINAL DIAMETER, CONNECTION: ANSI B16.5 150# RF, FLANGE MATERIAL: STAINLESS STEEL, LINING MATE
Vmm2ci2011kama41	VMM ELECTROMAGNETIC FLOW METER, FLOW RATE 0...4980 GPM, NOMINAL DIAMETER, CONNECTION: ANSI B16.5 150# RF, FLANGE MATERIAL: STAINLESS STEEL, LINING MATE
Vmm65i2012gama21	
P700.2 Obsolete, Replaced By P700.3	
Vhs15m0ipsen02	
P4	
Vmm50i2111gama41	
P1000.1	PRESSURE PUMP,0...14500 PSIG, HYDRAULIC, PUMP WITH, CASE, HOSE, ADAPTORS, SEALS
Tpm165s	TP SOLID, MULT-FUNCTION TEMPERATURE CALIBRATOR, -35C...165C, +/- 0.1/0.3/0.5C ACCURACY, 100-240 VAC, 50/60HZ
Apa0160	PRECISION, 0.05% FS, RELATIV (PR)0.160 BAR
Vmm3li1121kama21	
Vmm32i1122gama31	
P1000.1-Oem	
Vmm50i2121gama31	
Vmm40i1020gama21	
Vmm40i1022kama21	
Vvxbbeg2rrrp151e	
Vvxbben2ubu1221e	
Vmm80i10	
Vs2074va0000a4	
Vk306m2hisen02	
Vmm50i2020kama31	
Vmm2ci1010kama31	VMM ELECTROMAGNETIC FLOW METER, FLOW RATE 0...4980 GPM, NOMINAL DIAMETER, CONNECTION: ANSI B16.5 150# RF, FLANGE

MATERIAL: CARBON STEEL, LINING MATERIA	
Sme8c151tk100ki6	
Wh505m	
Apa0120	PRECISION, 0.05% FS, RELATIV (PR)0.120 BAR
Vvxaaen1ua00151c	
VKS10M0P19PI21	Flow switch VKS 10 M PPE + PS-GF30 Noryl, SP-S3763 Brass pipe section G3 / 8 female thread DN 10, PN 10 Max. Medium temperature 100 ° C Output potential-free contact Appliance plug EN 175301-803-A + LED cable socket
Vmm32i1011kama41	
Din Single Adapter P4/P40.2/P60-Npt 1/4"	
Vmm3li10	
Vmmv3i1022kama21	
Vmm50i1021kama31	
Vmm3li1122kama21	
Apa0020	PRECISION, 0.05% FS, RELATIV (PR)(-1)0.20 BAR
Vzs0.025gg	
Vmm80i1122kama31	
Vmm1ci2112gama31	VMM ELECTROMAGNETIC FLOW METER, FLOW RATE 0...1245 GPM, NOMINAL DIAMETER 4 CONNECTION: ANSI B16.5 150# RF, FLANGE MATERIAL: STAINLESS STEEL, LINING MA
2297	
Vxk15m2warmf01	
Vmm1ci1121kama21	
Vmmv3i2110gama41	
Vmmv3i2022kama21	
Tp17650s	TP SOLID, DRY BLOCK WITH INTERNAL REFERENCE, RT...650C, +/- 0.4C ACCURACY, 90-240 VAC, 50/60HZ
Sme8c031tk250ki6	
Vmm1ci1021gama21	
Vmm50i1110kama31	
E2-1000	
Vmm32i2112gama41	
Bpa0100	PRECISION, 0.025% FS, RELATIV (PR)0.100 BAR
P60 Bar Pump With Complete Kit & 2 Years Warranty	
Vt1541khutti20	
Vmm80i2121kama21	
Cpa0007	PRECISION, 0.01% FS, RELATIV (PR)(-1)0.7 BAR

Vmm65i2112kama31	
Vmm2ci1022kama31	VMM ELECTROMAGNETIC FLOW METER, FLOW RATE 0...4980 GPM, NOMINAL DIAMETER, CONNECTION: ANSI B16.5 150# RF, FLANGE MATERIAL: CARBON STEEL, LINING MATERIA
Apa0200	PRECISION, 0.05% FS, RELATIV (PR)0.200 BAR
Vmm32i2020gama41	
Vmm2ci2012kama41	VMM ELECTROMAGNETIC FLOW METER, FLOW RATE 0...4980 GPM, NOMINAL DIAMETER, CONNECTION: ANSI B16.5 150# RF, FLANGE MATERIAL: STAINLESS STEEL, LINING MATE
Vmm50i1021kama21	
Vmm3li2011kama41	VMM ELECTROMAGNETIC FLOW METER, FLOW RATE 0...2801 GPM, NOMINAL DIAMETER, CONNECTION: ANSI B16.5 150# RF, FLANGE MATERIAL: STAINLESS STEEL, LINING MATE
Vmm40i1122gama31	
Apr0700	PRECISION, 0.05% FS, RELATIV (PR)0.700 BAR
Vvxbbe2rrm251e	
R-5	
Type 26 Bq010	
Vmm2ci1010kama41	VMM ELECTROMAGNETIC FLOW METER, FLOW RATE 0...4980 GPM, NOMINAL DIAMETER, CONNECTION: ANSI B16.5 150# RF, FLANGE MATERIAL: CARBON STEEL, LINING MATERIA
Vmm2ci2120kama31	VMM ELECTROMAGNETIC FLOW METER, FLOW RATE 0...4980 GPM, NOMINAL DIAMETER 8 CONNECTION: ANSI B16.5 150# RF, FLANGE MATERIAL: STAINLESS STEEL, LINING MA
Vmm65i1112kama21	
Apa0012	PRECISION, 0.05% FS, RELATIV (PR)(-1)0...12 BAR
Vmm40i1110gama31	
Vmm1ci2121gama31	VMM ELECTROMAGNETIC FLOW METER, FLOW RATE 0...1245 GPM, NOMINAL DIAMETER 4 CONNECTION: ANSI B16.5 150# RF, FLANGE MATERIAL: STAINLESS STEEL, LINING MA
Vmmv3i2112gama21	
Vmm2ci1021gama41	VMM ELECTROMAGNETIC FLOW METER, FLOW RATE 0...4980 GPM, NOMINAL DIAMETER, CONNECTION: ANSI B16.5 150# RF, FLANGE MATERIAL: CARBON STEEL, LINING MATERIA
Mc50	MULTIFUNCTION CALIBRATORS, PT50 PT100 PT200 PT500 PT1000, ACCURACY +/- 0,017% V.M. +K, RESISTANCE 0.400 O / 0...4000 O, VOLTAGE: 0.100 MV /
Vhs-05-M - Str¼mungsschalter Typ Vhs	
Vmm80i2020gama31	
Vhs25m0regin05 (90261089/De)	
Vmm65i1012gama31	
Vmm50i1020gama31	
Vmm32i2022kama41	

Vmmv3i2020kama21	
Vmm1ci2010gama41	VMM ELECTROMAGNETIC FLOW METER, FLOW RATE 0...1245 GPM, NOMINAL DIAMETER, CONNECTION: ANSI B16.5 150# RF, FLANGE MATERIAL: STAINLESS STEEL, LINING MATE
Vmm65i2021kama31	
Tp17166	TP BASIC, DRY BLOCK WITH INTERNAL REFERENCE -35C...165C, +/- 0.4C ACCURACY ACCURACY 100...240VAC, 50/60 HZ
Bpr0200	PRECISION, 0.025% FS, RELATIV (PR)0.200 BAR
Vmm65i1020kama31	
432064	
Vmm1ci2112gama21	VMM ELECTROMAGNETIC FLOW METER, FLOW RATE 0...1245 GPM, NOMINAL DIAMETER 4 CONNECTION: ANSI B16.5 150# RF, FLANGE MATERIAL: STAINLESS STEEL, LINING MA
Tlk35	
Vmm50i2012kama41	
Tlk94hvrrrrh New Version	
Vmm65i1121gama31	
Vmm80i2112kama31	
Ad3026	
Vmm1ci1112gama41	
Vmm32i2021kama41	
Cpr0135	PRECISION, 0.01% FS, RELATIV (PR)0.135 BAR
Sikaflex -11fc+ Betongrau 600ml	
R-700	
Apa0400	PRECISION, 0.05% FS, RELATIV (PR)0.400 BAR
Vmm3li2012kama31	VMM ELECTROMAGNETIC FLOW METER, FLOW RATE 0...2801 GPM, NOMINAL DIAMETER, CONNECTION: ANSI B16.5 150# RF, FLANGE MATERIAL: STAINLESS STEEL, LINING MATE
Vmm65i1111gama21	
Vmm2ci1120kama21	VMM ELECTROMAGNETIC FLOW METER, FLOW RATE 0...4980 GPM, NOMINAL DIAMETER 8 CONNECTION: ANSI B16.5 150# RF, FLANGE MATERIAL: CARBON STEEL, LINING MATER
Tp37166e	TP PREMIUM, MULTIFUNCTION TEMPERATURE CALIBRATOR, -35C...165C, +/- 0.2/0.5/1C ACCURACY, 100-240 VAC, 50/60HZ
Cpa0120	PRECISION, 0.01% FS, RELATIV (PR)0.120 BAR
Vmm2ci1022kama41	VMM ELECTROMAGNETIC FLOW METER, FLOW RATE 0...4980 GPM, NOMINAL DIAMETER, CONNECTION: ANSI B16.5 150# RF, FLANGE MATERIAL: CARBON STEEL, LINING MATERIA
Pm110pic	
Vmm3li2120gama21	VMM ELECTROMAGNETIC FLOW METER, FLOW RATE 0...2801 GPM, NOMINAL DIAMETER 6 CONNECTION: ANSI B16.5 150# RF, FLANGE MATERIAL: STAINLESS STEEL, LINING MA

Vmm32i1112kama41	
Vmm65i1020kama21	
Vmm2ci1011kama41	VMM ELECTROMAGNETIC FLOW METER, FLOW RATE 0....4980 GPM, NOMINAL DIAMETER, CONNECTION: ANSI B16.5 150# RF, FLANGE MATERIAL: CARBON STEEL, LINING MATERIA
Vmm80i2021gama41	
Vmm1ci2022gama31	VMM ELECTROMAGNETIC FLOW METER, FLOW RATE 0....1245 GPM, NOMINAL DIAMETER, CONNECTION: ANSI B16.5 150# RF, FLANGE MATERIAL: STAINLESS STEEL, LINING MATE
Vmm32i1121gama31	
Vks 10 M Pn10	
Vmm3li1020kama21	
Vmm40i2120kama41	
Apa0700	PRECISION, 0.05% FS, RELATIV (PR)0.700 BAR
Apa0030	PRECISION, 0.05% FS, RELATIV (PR)(-1)0.30 BAR
Cpaa0010	PRECISION, 0.01% FS, RELATIV (PR)(-1)0.10 BAR
Vmm2ci1011kama31	VMM ELECTROMAGNETIC FLOW METER, FLOW RATE 0....4980 GPM, NOMINAL DIAMETER, CONNECTION: ANSI B16.5 150# RF, FLANGE MATERIAL: CARBON STEEL, LINING MATERIA
Vmmv3i1122gama21	
Vmm32i20	
Antisol E-40	
Vmm32i1021gama41	
Vmm2ci2112kama21	VMM ELECTROMAGNETIC FLOW METER, FLOW RATE 0....4980 GPM, NOMINAL DIAMETER 8 CONNECTION: ANSI B16.5 150# RF, FLANGE MATERIAL: STAINLESS STEEL, LINING MA
Vmm3li2110gama31	VMM ELECTROMAGNETIC FLOW METER, FLOW RATE 0....2801 GPM, NOMINAL DIAMETER 6 CONNECTION: ANSI B16.5 150# RF, FLANGE MATERIAL: STAINLESS STEEL, LINING MA
Apa0007	PRECISION, 0.05% FS, RELATIV (PR)(-1)0.7 BAR
Pm040d00000300	
Vmm3li1010gama21	VMM ELECTROMAGNETIC FLOW METER, FLOW RATE 0....2801 GPM, NOMINAL DIAMETER, CONNECTION: ANSI B16.5 150# RF, FLANGE MATERIAL: CARBON STEEL, LINING MATERIA
Vmm80i11	
Vvxbbep2rrm221e	
Vmm3li1022kama31	VMM ELECTROMAGNETIC FLOW METER, FLOW RATE 0....2801 GPM, NOMINAL DIAMETER, CONNECTION: ANSI B16.5 150# RF, FLANGE MATERIAL: CARBON STEEL, LINING MATERIA
Sikament 90 Mf	
Vmm3li1012kama41	VMM ELECTROMAGNETIC FLOW METER, FLOW RATE 0....2801 GPM, NOMINAL DIAMETER, CONNECTION: ANSI B16.5 150# RF, FLANGE MATERIAL: CARBON STEEL, LINING MATERIA
	VMM ELECTROMAGNETIC FLOW METER, FLOW RATE 0....1245 GPM,

Vmm1ci2122gama31	NOMINAL DIAMETER 4 CONNECTION: ANSI B16.5 150# RF, FLANGE MATERIAL: STAINLESS STEEL, LINING MA
Vmm80i1112gama31	
Izai3103	
Vvxbben2ub00151e	
Vmm1ci2022gama41	VMM ELECTROMAGNETIC FLOW METER, FLOW RATE 0...1245 GPM, NOMINAL DIAMETER, CONNECTION: ANSI B16.5 150# RF, FLANGE MATERIAL: STAINLESS STEEL, LINING MATE
Vk350moairb105	
Vmm50i2112kama31	
Vmz081s1peg24310	
Vmm3li2021gama41	VMM ELECTROMAGNETIC FLOW METER, FLOW RATE 0...2801 GPM, NOMINAL DIAMETER, CONNECTION: ANSI B16.5 150# RF, FLANGE MATERIAL: STAINLESS STEEL, LINING MATE
Cpaa0070	PRECISION, 0.01% FS, RELATIV (PR)0.70 BAR
271-2-10-1-1-160-2-1	
Vks15m0arden97	
Vmm40i2112kama21	
Apaa1000	PRECISION, 0.05% FS, RELATIV (PR)0.1000 BAR
Mm Hose For P700.2 Pump	
Vmm1ci1112kama31	
Bpaa0700	PRECISION, 0.025% FS, RELATIV (PR)0.700 BAR
Vvxbbep20000221e	
27221011100	
Apa0135	PRECISION, 0.05% FS, RELATIV (PR)0.135 BAR
Vmm1ci2010gama21	VMM ELECTROMAGNETIC FLOW METER, FLOW RATE 0...1245 GPM, NOMINAL DIAMETER, CONNECTION: ANSI B16.5 150# RF, FLANGE MATERIAL: STAINLESS STEEL, LINING MATE
E2 700	
Apaa0040	PRECISION, 0.05% FS, RELATIV (PR)0.40 BAR
Vmm1ci1121gama41	
Vsappsht	
Vmm2ci2110gama21	VMM ELECTROMAGNETIC FLOW METER, FLOW RATE 0...4980 GPM, NOMINAL DIAMETER 8 CONNECTION: ANSI B16.5 150# RF, FLANGE MATERIAL: STAINLESS STEEL, LINING MA
Cpa0135	PRECISION, 0.01% FS, RELATIV (PR)0.135 BAR
Vmm1ci2011gama21	VMM ELECTROMAGNETIC FLOW METER, FLOW RATE 0...1245 GPM, NOMINAL DIAMETER, CONNECTION: ANSI B16.5 150# RF, FLANGE MATERIAL: STAINLESS STEEL, LINING MATE
Vks20m2leybo79	
Trolleyfortransportcase	

Vhs25	
Vmm80i2021kama31	
Vmm3li1122kama41	
Vmm50i2112kama21	
Vmm2ci1122gama21	VMM ELECTROMAGNETIC FLOW METER, FLOW RATE 0...4980 GPM, NOMINAL DIAMETER 8 CONNECTION: ANSI B16.5 150# RF, FLANGE MATERIAL: CARBON STEEL, LINING MATER
Vmmv3i2110gama31	
Vmm3li1012kama31	VMM ELECTROMAGNETIC FLOW METER, FLOW RATE 0...2801 GPM, NOMINAL DIAMETER, CONNECTION: ANSI B16.5 150# RF, FLANGE MATERIAL: CARBON STEEL, LINING MATERIA
Vmm65i1110gama41	
Vmm80i2011gama41	
Vvxbben2ubu1121e	
Probe Dor Sensor Vhs00m	
Vmm2ci1021kama31	VMM ELECTROMAGNETIC FLOW METER, FLOW RATE 0...4980 GPM, NOMINAL DIAMETER, CONNECTION: ANSI B16.5 150# RF, FLANGE MATERIAL: CARBON STEEL, LINING MATERIA
Vmm3li2020kama31	VMM ELECTROMAGNETIC FLOW METER, FLOW RATE 0...2801 GPM, NOMINAL DIAMETER, CONNECTION: ANSI B16.5 150# RF, FLANGE MATERIAL: STAINLESS STEEL, LINING MATE
Vmm40i1112kama31	
Bpaa0300	PRECISION, 0.025% FS, RELATIV (PR)0.300 BAR
Vmm3li2122gama31	VMM ELECTROMAGNETIC FLOW METER, FLOW RATE 0...2801 GPM, NOMINAL DIAMETER 6 CONNECTION: ANSI B16.5 150# RF, FLANGE MATERIAL: STAINLESS STEEL, LINING MA
Vmm1ci2020gama21	VMM ELECTROMAGNETIC FLOW METER, FLOW RATE 0...1245 GPM, NOMINAL DIAMETER, CONNECTION: ANSI B16.5 150# RF, FLANGE MATERIAL: STAINLESS STEEL, LINING MATE
Vmm40i1020kama31	
Cpaa0700	PRECISION, 0.01% FS, RELATIV (PR)0.700 BAR
Vmm3li2122gama21	VMM ELECTROMAGNETIC FLOW METER, FLOW RATE 0...2801 GPM, NOMINAL DIAMETER 6 CONNECTION: ANSI B16.5 150# RF, FLANGE MATERIAL: STAINLESS STEEL, LINING MA
Vmm40i2120gama21	
Vvxa1snhrrhtr04	
Vmmv3i2011kama31	
Cpa0700	PRECISION, 0.01% FS, RELATIV (PR)0.700 BAR
Vt2511khutti31	
Bpaa0100	PRECISION, 0.025% FS, RELATIV (PR)0.100 BAR
Apr0070	PRECISION, 0.05% FS, RELATIV (PR)0.70 BAR
Vvxaaen1uarn251c	
Vmm65i2122kama41	

Apa1000	PRECISION, 0.05% FS, RELATIV (PR)0.1000 BAR
Vmm2ci2111kama41	VMM ELECTROMAGNETIC FLOW METER, FLOW RATE 0...4980 GPM, NOMINAL DIAMETER 8 CONNECTION: ANSI B16.5 150# RF, FLANGE MATERIAL: STAINLESS STEEL, LINING MA
R-250	
Vmmv3i1120kama41	
Vmm50i1122gama21	
Bpaa0007	PRECISION, 0.025% FS, RELATIV (PR)(-1)0.7 BAR
Apaa0060	PRECISION, 0.05% FS, RELATIV (PR)0...60 BAR
Vmm2ci1122kama21	VMM ELECTROMAGNETIC FLOW METER, FLOW RATE 0...4980 GPM, NOMINAL DIAMETER 8 CONNECTION: ANSI B16.5 150# RF, FLANGE MATERIAL: CARBON STEEL, LINING MATER
Mh3710	
Vmm3li1111kama41	
Vmm2ci2122gama21	VMM ELECTROMAGNETIC FLOW METER, FLOW RATE 0...4980 GPM, NOMINAL DIAMETER 8 CONNECTION: ANSI B16.5 150# RF, FLANGE MATERIAL: STAINLESS STEEL, LINING MA
Vvxbbeg2rrm121e	
D2-700	
Vmm50i1020kama41	
Vmm2ci1122kama41	VMM ELECTROMAGNETIC FLOW METER, FLOW RATE 0...4980 GPM, NOMINAL DIAMETER 8 CONNECTION: ANSI B16.5 150# RF, FLANGE MATERIAL: CARBON STEEL, LINING MATER
Tpm255s	TP SOLID, MULT-FUNCTION TEMPERATURE CALIBRATOR, RT...255C, +/- 0.2/0.4/0.5C ACCURACY, 90-240 VAC, 50/60HZ
Vvxbbep2rrrp251e	
Vvxbben2ubrm121e	
Vmm50i1121gama31	
Vmm50i1010kama31	
Vmm2ci1021gama31	VMM ELECTROMAGNETIC FLOW METER, FLOW RATE 0...4980 GPM, NOMINAL DIAMETER, CONNECTION: ANSI B16.5 150# RF, FLANGE MATERIAL: CARBON STEEL, LINING MATERIA
Vmm32i2011gama31	
Vmm2ci2112gama41	VMM ELECTROMAGNETIC FLOW METER, FLOW RATE 0...4980 GPM, NOMINAL DIAMETER 8 CONNECTION: ANSI B16.5 150# RF, FLANGE MATERIAL: STAINLESS STEEL, LINING MA
Vmm2ci1120kama31	VMM ELECTROMAGNETIC FLOW METER, FLOW RATE 0...4980 GPM, NOMINAL DIAMETER 8 CONNECTION: ANSI B16.5 150# RF, FLANGE MATERIAL: CARBON STEEL, LINING MATER
1012-000878 Sikafleks-11fc+	
Vmm2ci1111kama31	VMM ELECTROMAGNETIC FLOW METER, FLOW RATE 0...4980 GPM, NOMINAL DIAMETER 8 CONNECTION: ANSI B16.5 150# RF, FLANGE MATERIAL: CARBON STEEL, LINING MATER
Vmm65i2012gama41	

Vmm65i1111gama41	
Sikadurã174; 30 !!	
Vmm1ci2020gama41	VMM ELECTROMAGNETIC FLOW METER, FLOW RATE 0...1245 GPM, NOMINAL DIAMETER, CONNECTION: ANSI B16.5 150# RF, FLANGE MATERIAL: STAINLESS STEEL, LINING MATE
Cpa0004	PRECISION, 0.01% FS, RELATIV (PR)(-1)0.4 BAR
Bpr0007	PRECISION, 0.025% FS, RELATIV (PR)(-1)0.7 BAR
Vmmv3i2022gama41	
2294	
Cpaa0060	PRECISION, 0.01% FS, RELATIV (PR)0...60 BAR
Vhs05m-Va	
Cpr0300	PRECISION, 0.01% FS, RELATIV (PR)0.300 BAR
Vmmzpr1ca0	
K110121602311	
Vmm1ci2011gama31	VMM ELECTROMAGNETIC FLOW METER, FLOW RATE 0...1245 GPM, NOMINAL DIAMETER, CONNECTION: ANSI B16.5 150# RF, FLANGE MATERIAL: STAINLESS STEEL, LINING MATE
Vmm2ci2012gama41	VMM ELECTROMAGNETIC FLOW METER, FLOW RATE 0...4980 GPM, NOMINAL DIAMETER, CONNECTION: ANSI B16.5 150# RF, FLANGE MATERIAL: STAINLESS STEEL, LINING MATE
Vmm32i1012kama41	
Vmm1ci2111kama21	
Vmmv3i2022gama31	
Vmm40i2020kama21	
R-350	
Vmm80i2012kama21	
Vk325m0debel71 No.:4sw04143-3 D	
Tlk38-Aer	
Vmm80i2112gama31	
Vmm80i1021kama41	
Vmm32i2010gama21	
Vmm3li1112kama31	
Vhs05m01171r21	
P700 2	
Bpa0012	PRECISION, 0.025% FS, RELATIV (PR)(-1)0...12 BAR
Cpaa0135	PRECISION, 0.01% FS, RELATIV (PR)0.135 BAR
Vmm40i1010gama41	
Vmm2ci1112gama41	VMM ELECTROMAGNETIC FLOW METER, FLOW RATE 0...4980 GPM, NOMINAL DIAMETER 8 CONNECTION: ANSI B16.5 150# RF, FLANGE

	MATERIAL: CARBON STEEL, LINING MATER
Vmm3li2111gama41	VMM ELECTROMAGNETIC FLOW METER, FLOW RATE 0...2801 GPM, NOMINAL DIAMETER 6 CONNECTION: ANSI B16.5 150# RF, FLANGE MATERIAL: STAINLESS STEEL, LINING MA
Vh020i	
Vmm65i2110gama31	
Vmz08as1deg24fz0	
Cpaa0040	PRECISION, 0.01% FS, RELATIV (PR)0.40 BAR
Vmm50i2010gama41	
Vmm3li1110kama41	
Vmm2ci1111kama21	VMM ELECTROMAGNETIC FLOW METER, FLOW RATE 0...4980 GPM, NOMINAL DIAMETER 8 CONNECTION: ANSI B16.5 150# RF, FLANGE MATERIAL: CARBON STEEL, LINING MATER
Vmi1040k7cpt0n3	
Vh305m0111r21	
Tp3m165e	TP PREMIUM, MULTIFUNCTION TEMPERATURE CALIBRATOR, -35C...165C, +/- 0.1/0.3/0.5C ACCURACY, 100-240 VAC, 50/60HZ
Vmm2ci1110kama21	
Vmm80i1010gama31	
Vmm2ci1111gama21	VMM ELECTROMAGNETIC FLOW METER, FLOW RATE 0...4980 GPM, NOMINAL DIAMETER 8 CONNECTION: ANSI B16.5 150# RF, FLANGE MATERIAL: CARBON STEEL, LINING MATER
Vvxaaeg1rrm121c	
Vmmv3i1021gama21	
Vmmv3i1010kama31	
Vmmv3i1110kama21	
Waterbar Ar !!	
Vmm80i2011kama31	
Vmm40i2010kama31	
Vmm80i1022gama31	
Vmm65i1111kama31	
Cpr0007	PRECISION, 0.01% FS, RELATIV (PR)(-1)0.7 BAR
Vt2511meloth01	
Vmm65i2120kama31	
Vh015i	
Bpa0040	PRECISION, 0.025% FS, RELATIV (PR)0.40 BAR
Vmm2ci2011gama31	VMM ELECTROMAGNETIC FLOW METER, FLOW RATE 0...4980 GPM, NOMINAL DIAMETER, CONNECTION: ANSI B16.5 150# RF, FLANGE MATERIAL: STAINLESS STEEL, LINING MATE
Vmm32i1010kama41	

Vmm1ci2122gama21	VMM ELECTROMAGNETIC FLOW METER, FLOW RATE 0...1245 GPM, NOMINAL DIAMETER 4 CONNECTION: ANSI B16.5 150# RF, FLANGE MATERIAL: STAINLESS STEEL, LINING MA
Vhs15m01171i31	
Vt1541mshnp0a4	
Vhs32m0carri03	
Vmm3li2120gama41	VMM ELECTROMAGNETIC FLOW METER, FLOW RATE 0...2801 GPM, NOMINAL DIAMETER 6 CONNECTION: ANSI B16.5 150# RF, FLANGE MATERIAL: STAINLESS STEEL, LINING MA
Vmm80i2010kama31	
Vmm3li2120gama31	VMM ELECTROMAGNETIC FLOW METER, FLOW RATE 0...2801 GPM, NOMINAL DIAMETER 6 CONNECTION: ANSI B16.5 150# RF, FLANGE MATERIAL: STAINLESS STEEL, LINING MA
E2-700	
Vmm80i1110gama21	
2673	
Vmm3li1022gama41	VMM ELECTROMAGNETIC FLOW METER, FLOW RATE 0...2801 GPM, NOMINAL DIAMETER, CONNECTION: ANSI B16.5 150# RF, FLANGE MATERIAL: CARBON STEEL, LINING MATERIA
V1020s01351g4r	
Vmm3li1012kama21	VMM ELECTROMAGNETIC FLOW METER, FLOW RATE 0...2801 GPM, NOMINAL DIAMETER, CONNECTION: ANSI B16.5 150# RF, FLANGE MATERIAL: CARBON STEEL, LINING MATERIA
Vmz08as1peg24dw0	
Vmm32i2110gama31	
Bpa0004	PRECISION, 0.025% FS, RELATIV (PR)(-1)0.4 BAR
Vz1gg	
Vmmv3i2112kama41	
2279	
Apr0040	PRECISION, 0.05% FS, RELATIV (PR)0.40 BAR
Vmm1ci2121kama21	VMM ELECTROMAGNETIC FLOW METER, FLOW RATE 0...1245 GPM, NOMINAL DIAMETER 4 CONNECTION: ANSI B16.5 150# RF, FLANGE MATERIAL: STAINLESS STEEL, LINING MA
Vmm65i2021gama21	
Vmm65i2020kama41	
Vmmv3i2020gama41	
Vmm50i1121gama41	
Vmz08as1deg14cu0	
Vmm40i1112gama21	
Vmm80i2110gama41	
Vmm2ci2012kama21	VMM ELECTROMAGNETIC FLOW METER, FLOW RATE 0...4980 GPM, NOMINAL DIAMETER, CONNECTION: ANSI B16.5 150# RF, FLANGE

MATERIAL: STAINLESS STEEL, LINING MATE	
Vmm50i1111gama41	
Vmz08as1deg14dw0	
Vz0.04va	
Vmm80i1020gama31	
Vmm3li1110kama31	
E2-60	
Vmm80i1110kama21	
Cpaa0012	PRECISION, 0.01% FS, RELATIV (PR)(-1)0...12 BAR
Cpa0060	PRECISION, 0.01% FS, RELATIV (PR)0...60 BAR
Vmm3li2022kama41	VMM ELECTROMAGNETIC FLOW METER, FLOW RATE 0...2801 GPM, NOMINAL DIAMETER, CONNECTION: ANSI B16.5 150# RF, FLANGE MATERIAL: STAINLESS STEEL, LINING MATE
Vmm1ci2010kama31	
Vmm32i1121kama41	
Vmm1ci1122gama41	
Rs232cable	
Vmm65i1112gama21	
Vmm1ci2122kama21	VMM ELECTROMAGNETIC FLOW METER, FLOW RATE 0...1245 GPM, NOMINAL DIAMETER 4 CONNECTION: ANSI B16.5 150# RF, FLANGE MATERIAL: STAINLESS STEEL, LINING MA
Vmm1ci2122gama41	VMM ELECTROMAGNETIC FLOW METER, FLOW RATE 0...1245 GPM, NOMINAL DIAMETER 4 CONNECTION: ANSI B16.5 150# RF, FLANGE MATERIAL: STAINLESS STEEL, LINING MA
85065p53360	
Vmm50i2122gama21	
Vmm50i1012gama21	
Vmm3li2112kama21	VMM ELECTROMAGNETIC FLOW METER, FLOW RATE 0...2801 GPM, NOMINAL DIAMETER 6 CONNECTION: ANSI B16.5 150# RF, FLANGE MATERIAL: STAINLESS STEEL, LINING MA
Vmm3li1020kama41	
Vmmv3i1110kama31	
Vmmv3i1110kama41	
Vmm50i1022gama41	
Vmm80i2022kama31	
Vmm32i2112kama21	
Apa0200	PRECISION, 0.05% FS, RELATIV (PR)0.200 BAR
P-0.5	
Tp17650	TP BASIC, DRY BLOCK WITH INTERNAL REFERENCE RT...650C, +/- 0.8C ACCURACY 90...240VAC, 50/60 HZ

Vmmv3i2112kama21	
Vmm3li2112gama21	VMM ELECTROMAGNETIC FLOW METER, FLOW RATE 0...2801 GPM, NOMINAL DIAMETER 6 CONNECTION: ANSI B16.5 150# RF, FLANGE MATERIAL: STAINLESS STEEL, LINING MA
Vmm1ci2112gama41	VMM ELECTROMAGNETIC FLOW METER, FLOW RATE 0...1245 GPM, NOMINAL DIAMETER 4 CONNECTION: ANSI B16.5 150# RF, FLANGE MATERIAL: STAINLESS STEEL, LINING MA
Vmm3li2012kama41	VMM ELECTROMAGNETIC FLOW METER, FLOW RATE 0...2801 GPM, NOMINAL DIAMETER, CONNECTION: ANSI B16.5 150# RF, FLANGE MATERIAL: STAINLESS STEEL, LINING MATE
Vmm2ci1121kama31	VMM ELECTROMAGNETIC FLOW METER, FLOW RATE 0...4980 GPM, NOMINAL DIAMETER 8 CONNECTION: ANSI B16.5 150# RF, FLANGE MATERIAL: CARBON STEEL, LINING MATER
Vh3/4\	
Vmm40i2120kama31	
Vmm3li2021kama21	VMM ELECTROMAGNETIC FLOW METER, FLOW RATE 0...2801 GPM, NOMINAL DIAMETER, CONNECTION: ANSI B16.5 150# RF, FLANGE MATERIAL: STAINLESS STEEL, LINING MATE
Apa0300	PRECISION, 0.05% FS, RELATIV (PR)0.300 BAR
E2-400	
Vvxbben2ubrp221e	
Sikaflex 290i Dc	
Vmm2ci2022kama41	VMM ELECTROMAGNETIC FLOW METER, FLOW RATE 0...4980 GPM, NOMINAL DIAMETER, CONNECTION: ANSI B16.5 150# RF, FLANGE MATERIAL: STAINLESS STEEL, LINING MATE
Vmm80i1020gama41	
Bpa0120	PRECISION, 0.025% FS, RELATIV (PR)0.120 BAR
Vmm50i2011kama31	
Vmm65i1110kama41	
Vks10m0metsa01	
Vmm1ci1022gama21	VMM ELECTROMAGNETIC FLOW METER, FLOW RATE 0...1245 GPM, NOMINAL DIAMETER, CONNECTION: ANSI B16.5 150# RF, FLANGE MATERIAL: CARBON STEEL, LINING MATERIA
Vmm2ci1021kama41	VMM ELECTROMAGNETIC FLOW METER, FLOW RATE 0...4980 GPM, NOMINAL DIAMETER, CONNECTION: ANSI B16.5 150# RF, FLANGE MATERIAL: CARBON STEEL, LINING MATERIA
Vmm2ci2111gama31	VMM ELECTROMAGNETIC FLOW METER, FLOW RATE 0...4980 GPM, NOMINAL DIAMETER 8 CONNECTION: ANSI B16.5 150# RF, FLANGE MATERIAL: STAINLESS STEEL, LINING MA
Vt1541vadnp0a4	
Vmm40i1111gama31	
Vmm3li2010gama41	VMM ELECTROMAGNETIC FLOW METER, FLOW RATE 0...2801 GPM, NOMINAL DIAMETER, CONNECTION: ANSI B16.5 150# RF, FLANGE MATERIAL: STAINLESS STEEL, LINING MATE
Vmm2ci1121kama41	VMM ELECTROMAGNETIC FLOW METER, FLOW RATE 0...4980 GPM, NOMINAL DIAMETER 8 CONNECTION: ANSI B16.5 150# RF, FLANGE

	MATERIAL: CARBON STEEL, LINING MATER
Vmm2ci2022kama31	VMM ELECTROMAGNETIC FLOW METER, FLOW RATE 0...4980 GPM, NOMINAL DIAMETER, CONNECTION: ANSI B16.5 150# RF, FLANGE MATERIAL: STAINLESS STEEL, LINING MATE
Vmm2ci2122gama31	VMM ELECTROMAGNETIC FLOW METER, FLOW RATE 0...4980 GPM, NOMINAL DIAMETER 8 CONNECTION: ANSI B16.5 150# RF, FLANGE MATERIAL: STAINLESS STEEL, LINING MA
Vmm2ci2120gama21	VMM ELECTROMAGNETIC FLOW METER, FLOW RATE 0...4980 GPM, NOMINAL DIAMETER 8 CONNECTION: ANSI B16.5 150# RF, FLANGE MATERIAL: STAINLESS STEEL, LINING MA
Apa0060	PRECISION, 0.05% FS, RELATIV (PR)0...60 BAR
Cpaa1000	PRECISION, 0.01% FS, RELATIV (PR)0.1000 BAR
Glasfaser Salmaster	
Vmm2ci2120gama41	VMM ELECTROMAGNETIC FLOW METER, FLOW RATE 0...4980 GPM, NOMINAL DIAMETER 8 CONNECTION: ANSI B16.5 150# RF, FLANGE MATERIAL: STAINLESS STEEL, LINING MA
Vmm80i2021gama31	
Vmm2ci1112kama41	VMM ELECTROMAGNETIC FLOW METER, FLOW RATE 0...4980 GPM, NOMINAL DIAMETER 8 CONNECTION: ANSI B16.5 150# RF, FLANGE MATERIAL: CARBON STEEL, LINING MATER
Vmm80i1012gama41	
Vmmv3i1012kama41	
Vhs00moriets11	
Vmmv3i2020gama21	
Vhs20mo1171/41	
Vmm65i1011kama21	
Vmm65i1122kama31	
Vmmzprv3a0	
Vmm2ci1111gama41	VMM ELECTROMAGNETIC FLOW METER, FLOW RATE 0...4980 GPM, NOMINAL DIAMETER 8 CONNECTION: ANSI B16.5 150# RF, FLANGE MATERIAL: CARBON STEEL, LINING MATER
Vmm50i1110kama41	
Vmm50i2022gama41	
Vmm32i10	
Vh010i-MS	
Vmm2ci2120gama31	VMM ELECTROMAGNETIC FLOW METER, FLOW RATE 0...4980 GPM, NOMINAL DIAMETER 8 CONNECTION: ANSI B16.5 150# RF, FLANGE MATERIAL: STAINLESS STEEL, LINING MA
Vmm80i2122gama41	
Vmm32i1012kama21	
Vmm1ci2021gama41	VMM ELECTROMAGNETIC FLOW METER, FLOW RATE 0...1245 GPM, NOMINAL DIAMETER, CONNECTION: ANSI B16.5 150# RF, FLANGE MATERIAL: STAINLESS STEEL, LINING MATE
Vmm50i1020gama21	

Vz-S1va	
Vmm40i1020gama31	
Vmmv3i2110kama31	
Vmm50i2010gama21	
Vmmv3i1020kama31	
Vmm1ci1111gama41	
Vmm2ci1122kama31	VMM ELECTROMAGNETIC FLOW METER, FLOW RATE 0...4980 GPM, NOMINAL DIAMETER 8 CONNECTION: ANSI B16.5 150# RF, FLANGE MATERIAL: CARBON STEEL, LINING MATER
Cpr0040	PRECISION, 0.01% FS, RELATIV (PR)0.40 BAR
Vmm2ci2020kama21	VMM ELECTROMAGNETIC FLOW METER, FLOW RATE 0...4980 GPM, NOMINAL DIAMETER, CONNECTION: ANSI B16.5 150# RF, FLANGE MATERIAL: STAINLESS STEEL, LINING MATE
Vmm32i2012gama21	
Vmm80i2110kama21	
Vmm65i1012kama31	
Bpaa0160	PRECISION, 0.025% FS, RELATIV (PR)0.160 BAR
Vmm32i1010gama41	
Vmm40i2011gama41	
Vmm3li2011gama21	VMM ELECTROMAGNETIC FLOW METER, FLOW RATE 0...2801 GPM, NOMINAL DIAMETER, CONNECTION: ANSI B16.5 150# RF, FLANGE MATERIAL: STAINLESS STEEL, LINING MATE
V3040s01751g7r	
Tp18200e	
Vmm1ci2021kama31	VMM ELECTROMAGNETIC FLOW METER, FLOW RATE 0...1245 GPM, NOMINAL DIAMETER, CONNECTION: ANSI B16.5 150# RF, FLANGE MATERIAL: STAINLESS STEEL, LINING MATE
Vt1541mhwg-08	
Vmm32i2111kama31	
Vmm40i2012gama31	
Vmm80i2112kama21	
Ez999999990004	
Bpa0120	PRECISION, 0.025% FS, RELATIV (PR)0.120 BAR
Vmm3li1111kama31	
Tpm165s-U	TP SOLID, MULT-FUNCTION TEMPERATURE CALIBRATOR, -35C...165C, +/- 0.1/0.3/0.5C ACCURACY, 100-240 VAC, 50/60HZ
432063	
Vmm50i1120kama31	
Vmm32i2112gama31	
Vmm50i2111kama31	

Vmm32i1022gama31	
Vmm1ci2011kama21	VMM ELECTROMAGNETIC FLOW METER, FLOW RATE 0...1245 GPM, NOMINAL DIAMETER, CONNECTION: ANSI B16.5 150# RF, FLANGE MATERIAL: STAINLESS STEEL, LINING MATE
Vmm32i2020kama31	
Vmmv3i20	
Vmmv3i2020kama31	
Sikaflex 1 A	
Vvxbben2ubrp121e	
Bpa0160	PRECISION, 0.025% FS, RELATIV (PR)0.160 BAR
Vmm40i1110kama31	
Cpa0300	PRECISION, 0.01% FS, RELATIV (PR)0.300 BAR
Ed825a50	
Vmm50i1021gama31	
Vhsoomohuba-12	
Vmm2ci2110kama41	VMM ELECTROMAGNETIC FLOW METER, FLOW RATE 0...4980 GPM, NOMINAL DIAMETER 8 CONNECTION: ANSI B16.5 150# RF, FLANGE MATERIAL: STAINLESS STEEL, LINING MA
Apr1000	PRECISION, 0.05% FS, RELATIV (PR)0.1000 BAR
Vmm3li11	
Vhs05m03173r23	
Vmm65i1010gama41	
Vmm80i1121gama41	
Vmm1ci2121kama41	VMM ELECTROMAGNETIC FLOW METER, FLOW RATE 0...1245 GPM, NOMINAL DIAMETER 4 CONNECTION: ANSI B16.5 150# RF, FLANGE MATERIAL: STAINLESS STEEL, LINING MA
Bpa0300	PRECISION, 0.025% FS, RELATIV (PR)0.300 BAR
Vmm80i2112kama41	
Cpa0100	PRECISION, 0.01% FS, RELATIV (PR)0.100 BAR
Vmm40i1012kama31	
Vmm32i1110gama31	
Ad3004	
Vmm2ci1012gama41	VMM ELECTROMAGNETIC FLOW METER, FLOW RATE 0...4980 GPM, NOMINAL DIAMETER, CONNECTION: ANSI B16.5 150# RF, FLANGE MATERIAL: CARBON STEEL, LINING MATERIA
Vvxaaeg10000121c	
Vmm40i2122kama31	
Vmm50i2112gama31	
Vmm65i2120kama41	

Sika Activator	
Apr0007	PRECISION, 0.05% FS, RELATIV (PR)(-1)0.7 BAR
Vmm65i1120gama41	
Vt1541meldec02	
Vmm65i2022kama21	
Bpa0010	PRECISION, 0.025% FS, RELATIV (PR)(-1)0.10 BAR
Vmm2ci1012gama21	VMM ELECTROMAGNETIC FLOW METER, FLOW RATE 0...4980 GPM, NOMINAL DIAMETER, CONNECTION: ANSI B16.5 150# RF, FLANGE MATERIAL: CARBON STEEL, LINING MATERIA
Vh25m01wepa25	
Vmm32i2020kama41	
Vmm3li1120gama41	
Vmm3li1112gama31	VMM ELECTROMAGNETIC FLOW METER, FLOW RATE 0...2801 GPM, NOMINAL DIAMETER 6 CONNECTION: ANSI B16.5 150# RF, FLANGE MATERIAL: CARBON STEEL, LINING MATER
Vmm3li2110kama41	VMM ELECTROMAGNETIC FLOW METER, FLOW RATE 0...2801 GPM, NOMINAL DIAMETER 6 CONNECTION: ANSI B16.5 150# RF, FLANGE MATERIAL: STAINLESS STEEL, LINING MA
Sme8c03a41250is5	
Vmm40i10	
Vmmv3i2012gama41	
Vmm2ci1121gama31	VMM ELECTROMAGNETIC FLOW METER, FLOW RATE 0...4980 GPM, NOMINAL DIAMETER 8 CONNECTION: ANSI B16.5 150# RF, FLANGE MATERIAL: CARBON STEEL, LINING MATER
Vmm2ci1020gama21	VMM ELECTROMAGNETIC FLOW METER, FLOW RATE 0...4980 GPM, NOMINAL DIAMETER, CONNECTION: ANSI B16.5 150# RF, FLANGE MATERIAL: CARBON STEEL, LINING MATERIA
Tpm225s	TP SOLID, MULT-FUNCTION TEMPERATURE CALIBRATOR, RT...225C, +/- 0.2/0.4/0.5C ACCURACY, 90-240 VAC, 50/60HZ
Vmm40i2020kama41	
Apa0040	PRECISION, 0.05% FS, RELATIV (PR)0.40 BAR
Vmm2ci2122gama41	VMM ELECTROMAGNETIC FLOW METER, FLOW RATE 0...4980 GPM, NOMINAL DIAMETER 8 CONNECTION: ANSI B16.5 150# RF, FLANGE MATERIAL: STAINLESS STEEL, LINING MA
Vmm80i1122kama41	
Vmm32i1120kama31	
Vt151ktrump14	
Vmm50i2122gama31	
Vmm80i2122kama21	
Vmm50i2122kama31	
Vmm32i2111gama41	

Vmm32i2110kama41	
Vmm80i21	
2137	
Vmm3li2010gama21	VMM ELECTROMAGNETIC FLOW METER, FLOW RATE 0...2801 GPM, NOMINAL DIAMETER, CONNECTION: ANSI B16.5 150# RF, FLANGE MATERIAL: STAINLESS STEEL, LINING MATE
Vmm40i1120kama31	
Vmm1ci1020gama31	
Vmm32i2121gama21	
Vmm1ci2012gama21	VMM ELECTROMAGNETIC FLOW METER, FLOW RATE 0...1245 GPM, NOMINAL DIAMETER, CONNECTION: ANSI B16.5 150# RF, FLANGE MATERIAL: STAINLESS STEEL, LINING MATE
Pm040d00053000	
Vt1541kmatts01	
Vmm80i2021gama21	
Vmm1ci1110gama31	
Vmm32i1012kama31	
Apa0120	PRECISION, 0.05% FS, RELATIV (PR)0.120 BAR
Vmm3li2121gama41	VMM ELECTROMAGNETIC FLOW METER, FLOW RATE 0...2801 GPM, NOMINAL DIAMETER 6 CONNECTION: ANSI B16.5 150# RF, FLANGE MATERIAL: STAINLESS STEEL, LINING MA
Vmm3li2110gama21	VMM ELECTROMAGNETIC FLOW METER, FLOW RATE 0...2801 GPM, NOMINAL DIAMETER 6 CONNECTION: ANSI B16.5 150# RF, FLANGE MATERIAL: STAINLESS STEEL, LINING MA
Vmm65i2122gama31	
Vmm40i2122gama31	
Vmm3li2121gama21	VMM ELECTROMAGNETIC FLOW METER, FLOW RATE 0...2801 GPM, NOMINAL DIAMETER 6 CONNECTION: ANSI B16.5 150# RF, FLANGE MATERIAL: STAINLESS STEEL, LINING MA
Vhs10m01171i21	
Cpr0200	PRECISION, 0.01% FS, RELATIV (PR)0.200 BAR
Vmm1ci2112kama31	VMM ELECTROMAGNETIC FLOW METER, FLOW RATE 0...1245 GPM, NOMINAL DIAMETER 4 CONNECTION: ANSI B16.5 150# RF, FLANGE MATERIAL: STAINLESS STEEL, LINING MA
Mbps2504bs1	
Vmm2ci2011gama21	VMM ELECTROMAGNETIC FLOW METER, FLOW RATE 0...4980 GPM, NOMINAL DIAMETER, CONNECTION: ANSI B16.5 150# RF, FLANGE MATERIAL: STAINLESS STEEL, LINING MATE
Vmm32i2011kama21	
Vth 15 K5-41	
Vmm3li1020gama41	VMM ELECTROMAGNETIC FLOW METER, FLOW RATE 0...2801 GPM, NOMINAL DIAMETER, CONNECTION: ANSI B16.5 150# RF, FLANGE MATERIAL: CARBON STEEL, LINING MATERIA
Vvxbben2ubu1151e	

Vmm40i1121gama31	
Vmm32i2011gama41	
R-50	
3355	
Vmm65i1112kama41	
Vmm40i1010kama41	
Vmm40i1010gama31	
Vmm2ci2111gama41	VMM ELECTROMAGNETIC FLOW METER, FLOW RATE 0...4980 GPM, NOMINAL DIAMETER 8 CONNECTION: ANSI B16.5 150# RF, FLANGE MATERIAL: STAINLESS STEEL, LINING MA
Vmm3li2120kama21	VMM ELECTROMAGNETIC FLOW METER, FLOW RATE 0...2801 GPM, NOMINAL DIAMETER 6 CONNECTION: ANSI B16.5 150# RF, FLANGE MATERIAL: STAINLESS STEEL, LINING MA
Cpr0004	PRECISION, 0.01% FS, RELATIV (PR)(-1)0.4 BAR
Vmm1ci1012gama31	VMM ELECTROMAGNETIC FLOW METER, FLOW RATE 0...1245 GPM, NOMINAL DIAMETER, CONNECTION: ANSI B16.5 150# RF, FLANGE MATERIAL: CARBON STEEL, LINING MATERIA
Tp17166s-U	TP SOLID, MULT-FUNCTION TEMPERATURE CALIBRATOR, -35C...165C, +/- 0.2/0.5/1C ACCURACY, 100-240 VAC, 50/60HZ
Vmm2ci1112kama31	VMM ELECTROMAGNETIC FLOW METER, FLOW RATE 0...4980 GPM, NOMINAL DIAMETER 8 CONNECTION: ANSI B16.5 150# RF, FLANGE MATERIAL: CARBON STEEL, LINING MATER
Vmm3li2022kama21	VMM ELECTROMAGNETIC FLOW METER, FLOW RATE 0...2801 GPM, NOMINAL DIAMETER, CONNECTION: ANSI B16.5 150# RF, FLANGE MATERIAL: STAINLESS STEEL, LINING MATE
Xvt2009	
Vmm3li2112gama41	VMM ELECTROMAGNETIC FLOW METER, FLOW RATE 0...2801 GPM, NOMINAL DIAMETER 6 CONNECTION: ANSI B16.5 150# RF, FLANGE MATERIAL: STAINLESS STEEL, LINING MA
Vmm3li2111gama21	VMM ELECTROMAGNETIC FLOW METER, FLOW RATE 0...2801 GPM, NOMINAL DIAMETER 6 CONNECTION: ANSI B16.5 150# RF, FLANGE MATERIAL: STAINLESS STEEL, LINING MA
Apr0010	PRECISION, 0.05% FS, RELATIV (PR)(-1)0.10 BAR
Vmm80i2120kama21	
Vmm65i21	
Vks32m2leybo84	
Vmm32i2012kama31	
Vmm1ci2022kama31	VMM ELECTROMAGNETIC FLOW METER, FLOW RATE 0...1245 GPM, NOMINAL DIAMETER, CONNECTION: ANSI B16.5 150# RF, FLANGE MATERIAL: STAINLESS STEEL, LINING MATE
Vmm80i2020kama31	
Vmm2ci2021gama21	VMM ELECTROMAGNETIC FLOW METER, FLOW RATE 0...4980 GPM, NOMINAL DIAMETER, CONNECTION: ANSI B16.5 150# RF, FLANGE MATERIAL: STAINLESS STEEL, LINING MATE

Vmm3li1010kama31	
Bpaa0200	PRECISION, 0.025% FS, RELATIV (PR)0.200 BAR
Vmm65i2111kama41	
Vmm40i2012kama21	
Vmm50i2010kama31	
Vmmv3i2111gama41	
Vmmv3i2111gama21	
Vmm1ci1012gama21	VMM ELECTROMAGNETIC FLOW METER, FLOW RATE 0...1245 GPM, NOMINAL DIAMETER, CONNECTION: ANSI B16.5 150# RF, FLANGE MATERIAL: CARBON STEEL, LINING MATERIA
Vmm50i2011gama41	
Vmm40i2120gama31	
Vmm80i2010gama21	
100092596	
Bpr0060	PRECISION, 0.025% FS, RELATIV (PR)0...60 BAR
Vmm3li2011gama41	VMM ELECTROMAGNETIC FLOW METER, FLOW RATE 0...2801 GPM, NOMINAL DIAMETER, CONNECTION: ANSI B16.5 150# RF, FLANGE MATERIAL: STAINLESS STEEL, LINING MATE
Vmm3li1022gama21	VMM ELECTROMAGNETIC FLOW METER, FLOW RATE 0...2801 GPM, NOMINAL DIAMETER, CONNECTION: ANSI B16.5 150# RF, FLANGE MATERIAL: CARBON STEEL, LINING MATERIA
Vmm40i2121gama21	
Vmm50i1110gama41	
Vmm1ci1122kama31	
Vmm2ci2021gama31	VMM ELECTROMAGNETIC FLOW METER, FLOW RATE 0...4980 GPM, NOMINAL DIAMETER, CONNECTION: ANSI B16.5 150# RF, FLANGE MATERIAL: STAINLESS STEEL, LINING MATE
Vmm80i1112kama31	
Vmm50i2120kama31	
Vt1541trupm14	
Vmm3li2110kama21	VMM ELECTROMAGNETIC FLOW METER, FLOW RATE 0...2801 GPM, NOMINAL DIAMETER 6 CONNECTION: ANSI B16.5 150# RF, FLANGE MATERIAL: STAINLESS STEEL, LINING MA
Cpaa0200	PRECISION, 0.01% FS, RELATIV (PR)0.200 BAR
700704	
Cpr0030	PRECISION, 0.01% FS, RELATIV (PR)(-1)0.30 BAR
622820-0809	
Vmm32i1111gama31	
Vmm3li2121kama31	VMM ELECTROMAGNETIC FLOW METER, FLOW RATE 0...2801 GPM, NOMINAL DIAMETER 6 CONNECTION: ANSI B16.5 150# RF, FLANGE MATERIAL: STAINLESS STEEL, LINING MA
Vmmv3i2112kama31	

Vmm3li2012gama21	VMM ELECTROMAGNETIC FLOW METER, FLOW RATE 0....2801 GPM, NOMINAL DIAMETER, CONNECTION: ANSI B16.5 150# RF, FLANGE MATERIAL: STAINLESS STEEL, LINING MATE
Vmm40i2120gama41	
Vvxbben2ubrp151e	
Vmm40i1012kama21	
Vmm65i2022gama41	
Vmm40i2110kama31	
Vmm1ci1121kama41	
Vmm40i2022gama41	
Vti 15ms-41	
Bpr0100	PRECISION, 0.025% FS, RELATIV (PR)0.100 BAR
Vmm2ci2112gama21	VMM ELECTROMAGNETIC FLOW METER, FLOW RATE 0....4980 GPM, NOMINAL DIAMETER 8 CONNECTION: ANSI B16.5 150# RF, FLANGE MATERIAL: STAINLESS STEEL, LINING MA
Vmz08as1peg14fz0	
Vmm32i1011gama21	
Vmmv3i1020gama41	
Vmm2ci1110gama41	VMM ELECTROMAGNETIC FLOW METER, FLOW RATE 0....4980 GPM, NOMINAL DIAMETER 8 CONNECTION: ANSI B16.5 150# RF, FLANGE MATERIAL: CARBON STEEL, LINING MATER
Vmm3li2112kama41	VMM ELECTROMAGNETIC FLOW METER, FLOW RATE 0....2801 GPM, NOMINAL DIAMETER 6 CONNECTION: ANSI B16.5 150# RF, FLANGE MATERIAL: STAINLESS STEEL, LINING MA
Vmm3li2121kama21	VMM ELECTROMAGNETIC FLOW METER, FLOW RATE 0....2801 GPM, NOMINAL DIAMETER 6 CONNECTION: ANSI B16.5 150# RF, FLANGE MATERIAL: STAINLESS STEEL, LINING MA
Cpaa0120	PRECISION, 0.01% FS, RELATIV (PR)0.120 BAR
Cpa0010	PRECISION, 0.01% FS, RELATIV (PR)(-1)0.10 BAR
Vmm50i1011gama41	
Vmm50i2121gama41	
Vmm3li2022gama31	VMM ELECTROMAGNETIC FLOW METER, FLOW RATE 0....2801 GPM, NOMINAL DIAMETER, CONNECTION: ANSI B16.5 150# RF, FLANGE MATERIAL: STAINLESS STEEL, LINING MATE
Vmm65i2121gama41	
D-Ex-30	
Tp17zero	TP SOLID, DRY BLOCK WITH INTERNAL REFERENCE, -10C...100C, +/- 0.05C ACCURACY, 100-240 VAC, 50/60HZ
Vmm2ci2112kama31	VMM ELECTROMAGNETIC FLOW METER, FLOW RATE 0....4980 GPM, NOMINAL DIAMETER 8 CONNECTION: ANSI B16.5 150# RF, FLANGE MATERIAL: STAINLESS STEEL, LINING MA
Transportcase	
Vmm65i2011gama41	

Vmm3li1112gama21	VMM ELECTROMAGNETIC FLOW METER, FLOW RATE 0...2801 GPM, NOMINAL DIAMETER 6 CONNECTION: ANSI B16.5 150# RF, FLANGE MATERIAL: CARBON STEEL, LINING MATER
Vmm2ci2122kama31	VMM ELECTROMAGNETIC FLOW METER, FLOW RATE 0...4980 GPM, NOMINAL DIAMETER 8 CONNECTION: ANSI B16.5 150# RF, FLANGE MATERIAL: STAINLESS STEEL, LINING MA
D-Ex-60	
Apr0100	PRECISION, 0.05% FS, RELATIV (PR)0.100 BAR
Vmm40i1020kama41	
Vmm2ci2021kama31	VMM ELECTROMAGNETIC FLOW METER, FLOW RATE 0...4980 GPM, NOMINAL DIAMETER, CONNECTION: ANSI B16.5 150# RF, FLANGE MATERIAL: STAINLESS STEEL, LINING MATE
Vhs-01m0-1-17-1-D1-1	
Vmm80i1121gama21	
Cpaa0020	PRECISION, 0.01% FS, RELATIV (PR)(-1)0.20 BAR
Vmmzew3la0	
Vmm1ci2111gama31	VMM ELECTROMAGNETIC FLOW METER, FLOW RATE 0...1245 GPM, NOMINAL DIAMETER 4 CONNECTION: ANSI B16.5 150# RF, FLANGE MATERIAL: STAINLESS STEEL, LINING MA
Vmm65i1121gama21	
Vhs15m0c0nas02	
Vmm3li21	VMM ELECTROMAGNETIC FLOW METER, FLOW RATE 0...2801 GPM, NOMINAL DIAMETER 6 CONNECTION: ANSI B16.5 150# RF, FLANGE MATERIAL: STAINLESS STEEL, LINING MA
Vmz08as1deg24ex0	
Vhs 00 M-Va	
Vmm3li1120kama41	
Vmm3li2020gama21	VMM ELECTROMAGNETIC FLOW METER, FLOW RATE 0...2801 GPM, NOMINAL DIAMETER, CONNECTION: ANSI B16.5 150# RF, FLANGE MATERIAL: STAINLESS STEEL, LINING MATE
Vmm40i2012gama41	
Vmm1ci2120kama21	
Bpr0004	PRECISION, 0.025% FS, RELATIV (PR)(-1)0.4 BAR
Vmm40i2112kama31	
Vmm40i1112kama21	
Vmm80i1120gama21	
Xvvx018	
Vmm3li2110kama31	VMM ELECTROMAGNETIC FLOW METER, FLOW RATE 0...2801 GPM, NOMINAL DIAMETER 6 CONNECTION: ANSI B16.5 150# RF, FLANGE MATERIAL: STAINLESS STEEL, LINING MA
Vmm65i1011kama41	
Vmm1ci2112kama41	VMM ELECTROMAGNETIC FLOW METER, FLOW RATE 0...1245 GPM, NOMINAL DIAMETER 4 CONNECTION: ANSI B16.5 150# RF, FLANGE

MATERIAL : STAINLESS STEEL, LINING MA	
Vmm1ci1011kama31	
W 173p53100238305	
Wh58m-0020	
Vhs 00 M-Ms	
Vhs25m	
Vmm40i2121gama31	
Vmmv3i2022kama31	
Vmm1ci2120kama31	
Vmm2ci2022gama41	VMM ELECTROMAGNETIC FLOW METER, FLOW RATE 0...4980 GPM, NOMINAL DIAMETER, CONNECTION: ANSI B16.5 150# RF, FLANGE MATERIAL: STAINLESS STEEL, LINING MATE
Vmm2ci2020gama21	VMM ELECTROMAGNETIC FLOW METER, FLOW RATE 0...4980 GPM, NOMINAL DIAMETER, CONNECTION: ANSI B16.5 150# RF, FLANGE MATERIAL: STAINLESS STEEL, LINING MATE
Vmmv3i2010gama31	
Vmmv3i2112gama41	
Vmm1ci2021kama21	VMM ELECTROMAGNETIC FLOW METER, FLOW RATE 0...1245 GPM, NOMINAL DIAMETER, CONNECTION: ANSI B16.5 150# RF, FLANGE MATERIAL: STAINLESS STEEL, LINING MATE
Vmm40i2011kama31	
Vmm65i2010gama41	
Vvxaaen1uarp151c	
Vt1541msins0a4	
Vmm40i1120kama21	
Vmm80i1122gama31	
Cleaner 205	
Ed825r50	
Vmm2ci1012kama31	VMM ELECTROMAGNETIC FLOW METER, FLOW RATE 0...4980 GPM, NOMINAL DIAMETER, CONNECTION: ANSI B16.5 150# RF, FLANGE MATERIAL: CARBON STEEL, LINING MATERIA
Vhs 05 M	
Vmm32i2110kama31	
Vmmv3i2011kama21	
Vmm65i2011kama31	
Cpr0020	PRECISION, 0.01% FS, RELATIV (PR)(-1)0.20 BAR
Vmm2ci1110kama41	
Vmm2ci1120gama41	VMM ELECTROMAGNETIC FLOW METER, FLOW RATE 0...4980 GPM, NOMINAL DIAMETER 8 CONNECTION: ANSI B16.5 150# RF, FLANGE MATERIAL: CARBON STEEL, LINING MATER
	VMM ELECTROMAGNETIC FLOW METER, FLOW RATE 0...2801 GPM,

Vmm3li2111kama21	NOMINAL DIAMETER 6 CONNECTION: ANSI B16.5 150# RF, FLANGE MATERIAL: STAINLESS STEEL, LINING MA
Vmm65i1011gama21	
Vmm40i2011kama21	
Vmm3li2120kama41	VMM ELECTROMAGNETIC FLOW METER, FLOW RATE 0...2801 GPM, NOMINAL DIAMETER 6 CONNECTION: ANSI B16.5 150# RF, FLANGE MATERIAL: STAINLESS STEEL, LINING MA
Bpr0160	PRECISION, 0.025% FS, RELATIV (PR)0.160 BAR
Vks05m0carri05	
Vmm3li1021kama21	VMM ELECTROMAGNETIC FLOW METER, FLOW RATE 0...2801 GPM, NOMINAL DIAMETER, CONNECTION: ANSI B16.5 150# RF, FLANGE MATERIAL: CARBON STEEL, LINING MATERIA
D-Ex-300	
Apa0135	PRECISION, 0.05% FS, RELATIV (PR)0.135 BAR
Vmm65i1110kama31	
Vmm1ci2020gama31	VMM ELECTROMAGNETIC FLOW METER, FLOW RATE 0...1245 GPM, NOMINAL DIAMETER, CONNECTION: ANSI B16.5 150# RF, FLANGE MATERIAL: STAINLESS STEEL, LINING MATE
Vmm40i1022gama21	
Vmmv3i2021gama41	
Vmm1ci1122kama21	
Vhso5m-Messing	
Vmm50i1020gama41	
Sikadurã174; 31 !!	
Vz3va	
Apa0100	PRECISION, 0.05% FS, RELATIV (PR)0.100 BAR
E2-40	
Xvvx017	
Uctc	
Vmm65i1110gama21	
Vmm3li1011gama31	VMM ELECTROMAGNETIC FLOW METER, FLOW RATE 0...2801 GPM, NOMINAL DIAMETER, CONNECTION: ANSI B16.5 150# RF, FLANGE MATERIAL: CARBON STEEL, LINING MATERIA
Vmm80i20	
Vmmv3i2012kama31	
Vmm32i2112kama41	
Tp37200e	TP PREMIUM, DRY BLOCK TEMPERATURE CALIBRATOR, -55C...200C, +/- 0.2C ACCURACY, 100-240 VAC, 50/60HZ
Ec25	MULTIFUNCTION CALIBRATORS, PT100 PT200 PT500 PT1000, ACCURACY +/- 0,02% OF RDG. +K, RESISTANCE 0.400 O / 0...4000 O / 0...40000 O, VOLTAGE: 0.1
Vmz08as1peg24ex0	

Vmm40i2022gama31	
Vmmv3i1111gama41	
Vmm32i1020gama21	
Vmm3li1121gama41	VMM ELECTROMAGNETIC FLOW METER, FLOW RATE 0...2801 GPM, NOMINAL DIAMETER 6 CONNECTION: ANSI B16.5 150# RF, FLANGE MATERIAL: CARBON STEEL, LINING MATER
Vmm3li1111gama21	
Vmm80i2022kama21	
Cpaa0100	PRECISION, 0.01% FS, RELATIV (PR)0.100 BAR
Vmm2ci1012gama31	VMM ELECTROMAGNETIC FLOW METER, FLOW RATE 0...4980 GPM, NOMINAL DIAMETER, CONNECTION: ANSI B16.5 150# RF, FLANGE MATERIAL: CARBON STEEL, LINING MATERIA
Apaa0030	PRECISION, 0.05% FS, RELATIV (PR)(-1)0.30 BAR
Vmm50i2010kama41	
Vmm65i2112kama21	
Vmm50i2111kama41	
Apaa0700	PRECISION, 0.05% FS, RELATIV (PR)0.700 BAR
Vmmv3i2121kama31	
Vmm1ci2120gama41	
Vt1540k5ips0a4+xvt2053	
Vmm1ci2110gama41	
Sikadur 42 He	
Vmm80i2021kama41	
Dsp341a3h126	
Vmm32i2022kama21	
Vmm3li2020gama31	VMM ELECTROMAGNETIC FLOW METER, FLOW RATE 0...2801 GPM, NOMINAL DIAMETER, CONNECTION: ANSI B16.5 150# RF, FLANGE MATERIAL: STAINLESS STEEL, LINING MATE
Bpaa0040	PRECISION, 0.025% FS, RELATIV (PR)0.40 BAR
Vmm50i2120gama31	
Vmm3li2010kama21	VMM ELECTROMAGNETIC FLOW METER, FLOW RATE 0...2801 GPM, NOMINAL DIAMETER, CONNECTION: ANSI B16.5 150# RF, FLANGE MATERIAL: STAINLESS STEEL, LINING MATE
Vmm1ci1022kama41	
Vmm2ci1011gama31	VMM ELECTROMAGNETIC FLOW METER, FLOW RATE 0...4980 GPM, NOMINAL DIAMETER, CONNECTION: ANSI B16.5 150# RF, FLANGE MATERIAL: CARBON STEEL, LINING MATERIA
Vmm1ci1012kama31	
Vmm2ci1122gama31	VMM ELECTROMAGNETIC FLOW METER, FLOW RATE 0...4980 GPM, NOMINAL DIAMETER 8 CONNECTION: ANSI B16.5 150# RF, FLANGE MATERIAL: CARBON STEEL, LINING MATER

Vmm40i2110kama41	
Vmm65i1022kama21	
Drum Of Sikament-163n	
Vmm2ci1010gama21	VMM ELECTROMAGNETIC FLOW METER, FLOW RATE 0...4980 GPM, NOMINAL DIAMETER, CONNECTION: ANSI B16.5 150# RF, FLANGE MATERIAL: CARBON STEEL, LINING MATERIA
Vmm65i1120kama21	
Vmmv3i1020gama21	
Vmmv3i2012gama21	
R-1500	
Vmm3li2022gama21	VMM ELECTROMAGNETIC FLOW METER, FLOW RATE 0...2801 GPM, NOMINAL DIAMETER, CONNECTION: ANSI B16.5 150# RF, FLANGE MATERIAL: STAINLESS STEEL, LINING MATE
Vmm40i2021kama31	
Vmm2ci1020gama41	VMM ELECTROMAGNETIC FLOW METER, FLOW RATE 0...4980 GPM, NOMINAL DIAMETER, CONNECTION: ANSI B16.5 150# RF, FLANGE MATERIAL: CARBON STEEL, LINING MATERIA
Vmm32i2010gama41	
Vmm1ci1022kama31	
Vmm3li2010kama31	VMM ELECTROMAGNETIC FLOW METER, FLOW RATE 0...2801 GPM, NOMINAL DIAMETER, CONNECTION: ANSI B16.5 150# RF, FLANGE MATERIAL: STAINLESS STEEL, LINING MATE
Vmm65i1021gama31	
Vmm50i2122kama41	
Connector Dor Sensor Vhs00m	
Vmm80i1120gama31	
Vmm32i1110kama41	
Vmm65i2010gama31	
Vmm80i2022gama31	
Vmm3li1021kama41	VMM ELECTROMAGNETIC FLOW METER, FLOW RATE 0...2801 GPM, NOMINAL DIAMETER, CONNECTION: ANSI B16.5 150# RF, FLANGE MATERIAL: CARBON STEEL, LINING MATERIA
Vmm32i2110kama21	
Bpa0070	PRECISION, 0.025% FS, RELATIV (PR)0.70 BAR
Vmm40i1120gama31	
Vmm2ci2020gama31	VMM ELECTROMAGNETIC FLOW METER, FLOW RATE 0...4980 GPM, NOMINAL DIAMETER, CONNECTION: ANSI B16.5 150# RF, FLANGE MATERIAL: STAINLESS STEEL, LINING MATE
Vmmv3i1121gama31	
Vmm80i1111kama41	
Vmm3li2120kama31	VMM ELECTROMAGNETIC FLOW METER, FLOW RATE 0...2801 GPM, NOMINAL DIAMETER 6 CONNECTION: ANSI B16.5 150# RF, FLANGE

MATERIAL: STAINLESS STEEL, LINING MA	
Vhs 00 M / Vhs00m01171r31	
Vmm2ci2111kama31	VMM ELECTROMAGNETIC FLOW METER, FLOW RATE 0...4980 GPM, NOMINAL DIAMETER 8 CONNECTION: ANSI B16.5 150# RF, FLANGE MATERIAL: STAINLESS STEEL, LINING MA
Swivel - Rotary Unit For P4/P40.2/P60	
Vk340m2sanhe03	
Vmm80i2012kama41	
Vmm3li1120gama21	
Vmm2ci1121kama21	VMM ELECTROMAGNETIC FLOW METER, FLOW RATE 0...4980 GPM, NOMINAL DIAMETER 8 CONNECTION: ANSI B16.5 150# RF, FLANGE MATERIAL: CARBON STEEL, LINING MATER
Vmmv3i2122kama41	
Vmm32i1022kama31	
Vmm1ci1012gama41	VMM ELECTROMAGNETIC FLOW METER, FLOW RATE 0...1245 GPM, NOMINAL DIAMETER, CONNECTION: ANSI B16.5 150# RF, FLANGE MATERIAL: CARBON STEEL, LINING MATERIA
Vmm2ci1111kama41	VMM ELECTROMAGNETIC FLOW METER, FLOW RATE 0...4980 GPM, NOMINAL DIAMETER 8 CONNECTION: ANSI B16.5 150# RF, FLANGE MATERIAL: CARBON STEEL, LINING MATER
Vmm2ci1011gama41	VMM ELECTROMAGNETIC FLOW METER, FLOW RATE 0...4980 GPM, NOMINAL DIAMETER, CONNECTION: ANSI B16.5 150# RF, FLANGE MATERIAL: CARBON STEEL, LINING MATERIA
Vmm40i2122gama21	
Vmm40i1112gama41	
2824	
Vmm40i1122kama31	
Vmm3li1012gama21	VMM ELECTROMAGNETIC FLOW METER, FLOW RATE 0...2801 GPM, NOMINAL DIAMETER, CONNECTION: ANSI B16.5 150# RF, FLANGE MATERIAL: CARBON STEEL, LINING MATERIA
Bpaa0030	PRECISION, 0.025% FS, RELATIV (PR)(-1)0.30 BAR
Vmm65i2022gama31	
Vmm65i1112gama41	
Vmm3li1112kama41	
Vhs 05-M / Str¼mungsschalter Typ Vhs	
Vmm80i1111gama31	
Vmm1ci2121gama41	VMM ELECTROMAGNETIC FLOW METER, FLOW RATE 0...1245 GPM, NOMINAL DIAMETER 4 CONNECTION: ANSI B16.5 150# RF, FLANGE MATERIAL: STAINLESS STEEL, LINING MA
Vmm32i2010kama21	
Vmm50i2021gama21	
Vmm40i1020kama21	

Bpr0030	PRECISION, 0.025% FS, RELATIV (PR)(-1)0.30 BAR
Vmm50i1110kama21	
Vmm2ci2121kama31	VMM ELECTROMAGNETIC FLOW METER, FLOW RATE 0...4980 GPM, NOMINAL DIAMETER 8 CONNECTION: ANSI B16.5 150# RF, FLANGE MATERIAL: STAINLESS STEEL, LINING MA
Vvxbben2ubrn221e	
Vt1541mshns0a406 (Ex. Vt1540mmieba01)	
Vmm32i1022kama41	
Vmm80i2112gama21	
Vmz08as1peg14cu0	
Vmm50i1121gama21	
Vmm50i2020gama31	
Sikaflex Pro 11 Fc	
Vmm32i1110kama21	
Vmm3li2111gama31	VMM ELECTROMAGNETIC FLOW METER, FLOW RATE 0...2801 GPM, NOMINAL DIAMETER 6 CONNECTION: ANSI B16.5 150# RF, FLANGE MATERIAL: STAINLESS STEEL, LINING MA
R-2.5	
Vmm1ci2011kama31	VMM ELECTROMAGNETIC FLOW METER, FLOW RATE 0...1245 GPM, NOMINAL DIAMETER, CONNECTION: ANSI B16.5 150# RF, FLANGE MATERIAL: STAINLESS STEEL, LINING MATE
Vmm2ci2021gama41	VMM ELECTROMAGNETIC FLOW METER, FLOW RATE 0...4980 GPM, NOMINAL DIAMETER, CONNECTION: ANSI B16.5 150# RF, FLANGE MATERIAL: STAINLESS STEEL, LINING MATE
Vmmv3i1011gama41	
Tp 18850	
Cpa1000	PRECISION, 0.01% FS, RELATIV (PR)0.1000 BAR
Vmm2ci1122gama41	VMM ELECTROMAGNETIC FLOW METER, FLOW RATE 0...4980 GPM, NOMINAL DIAMETER 8 CONNECTION: ANSI B16.5 150# RF, FLANGE MATERIAL: CARBON STEEL, LINING MATER
Vmm1ci2112kama21	VMM ELECTROMAGNETIC FLOW METER, FLOW RATE 0...1245 GPM, NOMINAL DIAMETER 4 CONNECTION: ANSI B16.5 150# RF, FLANGE MATERIAL: STAINLESS STEEL, LINING MA
Cpr0060	PRECISION, 0.01% FS, RELATIV (PR)0...60 BAR
Vmm2ci2122kama21	VMM ELECTROMAGNETIC FLOW METER, FLOW RATE 0...4980 GPM, NOMINAL DIAMETER 8 CONNECTION: ANSI B16.5 150# RF, FLANGE MATERIAL: STAINLESS STEEL, LINING MA
Vmm50i2020gama21	
Vmm2ci2110kama21	VMM ELECTROMAGNETIC FLOW METER, FLOW RATE 0...4980 GPM, NOMINAL DIAMETER 8 CONNECTION: ANSI B16.5 150# RF, FLANGE MATERIAL: STAINLESS STEEL, LINING MA
Vmm50i1112gama31	
Bpr0120	PRECISION, 0.025% FS, RELATIV (PR)0.120 BAR

Bpaa0060	PRECISION, 0.025% FS, RELATIV (PR)0...60 BAR
Eu705520000006	
272b	
Cpr0070	PRECISION, 0.01% FS, RELATIV (PR)0.70 BAR
Vmm65i2122kama31	
Vmm80i2012gama31	
Vmm2ci2010kama21	VMM ELECTROMAGNETIC FLOW METER, FLOW RATE 0...4980 GPM, NOMINAL DIAMETER, CONNECTION: ANSI B16.5 150# RF, FLANGE MATERIAL: STAINLESS STEEL, LINING MATE
Bpa1000	PRECISION, 0.025% FS, RELATIV (PR)0.1000 BAR
Vt1541vaipn0a4	
Vmz08as1peg14ey0	
Vmm2ci2110gama41	VMM ELECTROMAGNETIC FLOW METER, FLOW RATE 0...4980 GPM, NOMINAL DIAMETER 8 CONNECTION: ANSI B16.5 150# RF, FLANGE MATERIAL: STAINLESS STEEL, LINING MA
Vmm2ci1012kama21	VMM ELECTROMAGNETIC FLOW METER, FLOW RATE 0...4980 GPM, NOMINAL DIAMETER, CONNECTION: ANSI B16.5 150# RF, FLANGE MATERIAL: CARBON STEEL, LINING MATERIA
Vmm80i1112kama41	
Vz-S3va	
296 Or Sika Trak Go	
Vmm32i2021gama41	
Vks15m0p19pi31	
Vmm80i1020kama21	
Vmm2ci1020kama41	VMM ELECTROMAGNETIC FLOW METER, FLOW RATE 0...4980 GPM, NOMINAL DIAMETER, CONNECTION: ANSI B16.5 150# RF, FLANGE MATERIAL: CARBON STEEL, LINING MATERIA
271-2-10-11-100-2-1	
Vmm2ci1020gama31	VMM ELECTROMAGNETIC FLOW METER, FLOW RATE 0...4980 GPM, NOMINAL DIAMETER, CONNECTION: ANSI B16.5 150# RF, FLANGE MATERIAL: CARBON STEEL, LINING MATERIA
Apa0070	PRECISION, 0.05% FS, RELATIV (PR)0.70 BAR
Vmm2ci2120kama21	VMM ELECTROMAGNETIC FLOW METER, FLOW RATE 0...4980 GPM, NOMINAL DIAMETER 8 CONNECTION: ANSI B16.5 150# RF, FLANGE MATERIAL: STAINLESS STEEL, LINING MA
Vmm2ci2121kama21	VMM ELECTROMAGNETIC FLOW METER, FLOW RATE 0...4980 GPM, NOMINAL DIAMETER 8 CONNECTION: ANSI B16.5 150# RF, FLANGE MATERIAL: STAINLESS STEEL, LINING MA
Vmm1ci2022kama41	VMM ELECTROMAGNETIC FLOW METER, FLOW RATE 0...1245 GPM, NOMINAL DIAMETER, CONNECTION: ANSI B16.5 150# RF, FLANGE MATERIAL: STAINLESS STEEL, LINING MATE
Vmm80i1012kama41	
Vmm3li2122gama41	VMM ELECTROMAGNETIC FLOW METER, FLOW RATE 0...2801 GPM, NOMINAL DIAMETER 6 CONNECTION: ANSI B16.5 150# RF, FLANGE MATERIAL: STAINLESS STEEL, LINING MA

Vmm80i1111gama41	
Vmm2ci2011kama31	VMM ELECTROMAGNETIC FLOW METER, FLOW RATE 0...4980 GPM, NOMINAL DIAMETER, CONNECTION: ANSI B16.5 150# RF, FLANGE MATERIAL: STAINLESS STEEL, LINING MATE
Vmm1ci2011kama41	VMM ELECTROMAGNETIC FLOW METER, FLOW RATE 0...1245 GPM, NOMINAL DIAMETER, CONNECTION: ANSI B16.5 150# RF, FLANGE MATERIAL: STAINLESS STEEL, LINING MATE
Vmm65i1022kama41	
0-50 C / 0-120 F	
Vmm80i2010gama41	
Apa0160	PRECISION, 0.05% FS, RELATIV (PR)0.160 BAR
Sme8c031tk100ki6	
Vmm3li2121kama41	VMM ELECTROMAGNETIC FLOW METER, FLOW RATE 0...2801 GPM, NOMINAL DIAMETER 6 CONNECTION: ANSI B16.5 150# RF, FLANGE MATERIAL: STAINLESS STEEL, LINING MA
Vmm1ci2122kama31	VMM ELECTROMAGNETIC FLOW METER, FLOW RATE 0...1245 GPM, NOMINAL DIAMETER 4 CONNECTION: ANSI B16.5 150# RF, FLANGE MATERIAL: STAINLESS STEEL, LINING MA
Vhs-08-M	
V1020s01351g4r Pressure: Pn16, Din 20, Max Medium Temp: 100 Deg C, Output Potential Free Contact	
Vmm1ci1010kama21	
Bpr1000	PRECISION, 0.025% FS, RELATIV (PR)0.1000 BAR
R-500	
Vmm3li2020kama21	VMM ELECTROMAGNETIC FLOW METER, FLOW RATE 0...2801 GPM, NOMINAL DIAMETER, CONNECTION: ANSI B16.5 150# RF, FLANGE MATERIAL: STAINLESS STEEL, LINING MATE
Vmm80i1021kama21	
Cpr0120	PRECISION, 0.01% FS, RELATIV (PR)0.120 BAR
157433 , Sikafloor-264 (??) (30 Kg Pack)	
Vmm32i21	
Vmm65i1111gama31	
Vmm1ci2122kama41	VMM ELECTROMAGNETIC FLOW METER, FLOW RATE 0...1245 GPM, NOMINAL DIAMETER 4 CONNECTION: ANSI B16.5 150# RF, FLANGE MATERIAL: STAINLESS STEEL, LINING MA
Vmm50i1012kama41	
Sikaplanã174; Wp 1100-20hl !!	
Cpr0160	PRECISION, 0.01% FS, RELATIV (PR)0.160 BAR
Vvxaaen1uarn121c	
P4-Oem	
L-20	

Vmm3li2021kama41	VMM ELECTROMAGNETIC FLOW METER, FLOW RATE 0...2801 GPM, NOMINAL DIAMETER, CONNECTION: ANSI B16.5 150# RF, FLANGE MATERIAL: STAINLESS STEEL, LINING MATE
Vmmv3i1122gama31	
Vmm2ci1112kama21	VMM ELECTROMAGNETIC FLOW METER, FLOW RATE 0...4980 GPM, NOMINAL DIAMETER 8 CONNECTION: ANSI B16.5 150# RF, FLANGE MATERIAL: CARBON STEEL, LINING MATER
Vmm65i1010gama31	
Vmm3li1020gama31	VMM ELECTROMAGNETIC FLOW METER, FLOW RATE 0...2801 GPM, NOMINAL DIAMETER, CONNECTION: ANSI B16.5 150# RF, FLANGE MATERIAL: CARBON STEEL, LINING MATERIA
Bpr0300	PRECISION, 0.025% FS, RELATIV (PR)0.300 BAR
175-2-10-2-1-063-2-1	
Vmm40i2020gama41	
Vmmv3i1012gama41	
Vmm1ci1110kama21	
Bpr0135	PRECISION, 0.025% FS, RELATIV (PR)0.135 BAR
Vmm32i2120gama41	
V3025s01751g5r	
Vhs05m	
Vmmv3i1012gama31	
2712101116021	
Cpaa0160	PRECISION, 0.01% FS, RELATIV (PR)0.160 BAR
Bpaa1000	PRECISION, 0.025% FS, RELATIV (PR)0.1000 BAR
Gtf401	
Vmm2ci2020gama41	VMM ELECTROMAGNETIC FLOW METER, FLOW RATE 0...4980 GPM, NOMINAL DIAMETER, CONNECTION: ANSI B16.5 150# RF, FLANGE MATERIAL: STAINLESS STEEL, LINING MATE
Vmm80i2111kama31	
Vmm40i2111gama41	
Vmm2ci1021kama21	VMM ELECTROMAGNETIC FLOW METER, FLOW RATE 0...4980 GPM, NOMINAL DIAMETER, CONNECTION: ANSI B16.5 150# RF, FLANGE MATERIAL: CARBON STEEL, LINING MATERIA
Vmm3li1021gama41	VMM ELECTROMAGNETIC FLOW METER, FLOW RATE 0...2801 GPM, NOMINAL DIAMETER, CONNECTION: ANSI B16.5 150# RF, FLANGE MATERIAL: CARBON STEEL, LINING MATERIA
Vmm65i2022gama21	
Vmm40i2121kama21	
Vmm50i2010gama31	
Vhs05m0117-1r21	
Vmm1ci2121gama21	VMM ELECTROMAGNETIC FLOW METER, FLOW RATE 0...1245 GPM, NOMINAL DIAMETER 4 CONNECTION: ANSI B16.5 150# RF, FLANGE MATERIAL: STAINLESS STEEL, LINING MA

Izah3102	
Vispp-Ht	
Vmm3li1020gama21	VMM ELECTROMAGNETIC FLOW METER, FLOW RATE 0...2801 GPM, NOMINAL DIAMETER, CONNECTION: ANSI B16.5 150# RF, FLANGE MATERIAL: CARBON STEEL, LINING MATERIA
Vvxbbeg20000121e	
Vmm3li1021gama31	VMM ELECTROMAGNETIC FLOW METER, FLOW RATE 0...2801 GPM, NOMINAL DIAMETER, CONNECTION: ANSI B16.5 150# RF, FLANGE MATERIAL: CARBON STEEL, LINING MATERIA
Vmm50i2020kama41	
Vmm3li1121gama21	VMM ELECTROMAGNETIC FLOW METER, FLOW RATE 0...2801 GPM, NOMINAL DIAMETER 6 CONNECTION: ANSI B16.5 150# RF, FLANGE MATERIAL: CARBON STEEL, LINING MATER
Vmm80i2121kama41	
Vmm65i1121kama31	
Vmm2ci2112gama31	VMM ELECTROMAGNETIC FLOW METER, FLOW RATE 0...4980 GPM, NOMINAL DIAMETER 8 CONNECTION: ANSI B16.5 150# RF, FLANGE MATERIAL: STAINLESS STEEL, LINING MA
Vt1541khutt122	
Vmm1ci2020kama41	
Vmm50i1111gama31	
Vmm1ci2011gama41	VMM ELECTROMAGNETIC FLOW METER, FLOW RATE 0...1245 GPM, NOMINAL DIAMETER, CONNECTION: ANSI B16.5 150# RF, FLANGE MATERIAL: STAINLESS STEEL, LINING MATE
Vmm65i2121kama41	
Apr0160	PRECISION, 0.05% FS, RELATIV (PR)0.160 BAR
Vmm50i1010gama21	
Vmm32i2010gama31	
Vmm40i2110gama21	
Bpaa0400	PRECISION, 0.025% FS, RELATIV (PR)0.400 BAR
Cpa0040	PRECISION, 0.01% FS, RELATIV (PR)0.40 BAR
432059	
Plastiment Bv 40	
Vmm50i2011gama21	
Tlk43hvccr-Sk	
Tp17165	TP BASIC, DRY BLOCK WITH INTERNAL REFERENCE, -35C...165C, +/- 0.4C ACCURACY, 100...240 VAC, 50/60HZ
Vmm32i2021kama31	
Vmm2ci1010gama41	VMM ELECTROMAGNETIC FLOW METER, FLOW RATE 0...4980 GPM, NOMINAL DIAMETER, CONNECTION: ANSI B16.5 150# RF, FLANGE MATERIAL: CARBON STEEL, LINING MATERIA
Vmm40i1121kama41	

Servicebag	
Vmm1ci1021kama31	
Vmm3li1022kama41	VMM ELECTROMAGNETIC FLOW METER, FLOW RATE 0...2801 GPM, NOMINAL DIAMETER, CONNECTION: ANSI B16.5 150# RF, FLANGE MATERIAL: CARBON STEEL, LINING MATERIA
Vmi2011k7gpt0n5	
Sikadur-Combiflexã174; Sg System !!	
Vmmv3i2110kama41	
Vmm80i1011kama31	
Vmm1ci11	
Vz-S5gg	
Vmm40i1021kama31	
Vmmv3i1022kama31	
Vz0.025va	
Vmm3li2011gama31	VMM ELECTROMAGNETIC FLOW METER, FLOW RATE 0...2801 GPM, NOMINAL DIAMETER, CONNECTION: ANSI B16.5 150# RF, FLANGE MATERIAL: STAINLESS STEEL, LINING MATE
R-1000	
Bpaa0010	PRECISION, 0.025% FS, RELATIV (PR)(-1)0.10 BAR
Vmm65i2120kama21	
Vmm65i2020kama21	
Cpa0070	PRECISION, 0.01% FS, RELATIV (PR)0.70 BAR
Vmm1ci2012kama41	VMM ELECTROMAGNETIC FLOW METER, FLOW RATE 0...1245 GPM, NOMINAL DIAMETER, CONNECTION: ANSI B16.5 150# RF, FLANGE MATERIAL: STAINLESS STEEL, LINING MATE
Vhs00m01171r31	
Vmm65i2110gama21	
Sme8c031tk100ki7	
Vvxaaeg1rrm151c	
Vmm65i2021gama31	
Vmm32i1021kama31	
Vmm32i2121gama31	
Bpr0020	PRECISION, 0.025% FS, RELATIV (PR)(-1)0.20 BAR
Vz0.2va	
Vmm80i1110kama41	
Cpaa0400	PRECISION, 0.01% FS, RELATIV (PR)0.400 BAR
Vth 15ms-41ve	
W083p310902302	

Vmm32i2120kama41	
174989 , Sikafloor-169 (Ab) (10 Kg Pack)	
Vmmv3i2120kama31	
Vmm3li1011gama41	VMM ELECTROMAGNETIC FLOW METER, FLOW RATE 0...2801 GPM, NOMINAL DIAMETER, CONNECTION: ANSI B16.5 150# RF, FLANGE MATERIAL: CARBON STEEL, LINING MATERIA
Vmm2ci2122kama41	VMM ELECTROMAGNETIC FLOW METER, FLOW RATE 0...4980 GPM, NOMINAL DIAMETER 8 CONNECTION: ANSI B16.5 150# RF, FLANGE MATERIAL: STAINLESS STEEL, LINING MA
Vmm1ci1010kama31	
Vmm3li2121gama31	VMM ELECTROMAGNETIC FLOW METER, FLOW RATE 0...2801 GPM, NOMINAL DIAMETER 6 CONNECTION: ANSI B16.5 150# RF, FLANGE MATERIAL: STAINLESS STEEL, LINING MA
Vvxaaen1uau1221c	
700104	
Vmm50i2020kama21	
Vmm3li1011gama21	VMM ELECTROMAGNETIC FLOW METER, FLOW RATE 0...2801 GPM, NOMINAL DIAMETER, CONNECTION: ANSI B16.5 150# RF, FLANGE MATERIAL: CARBON STEEL, LINING MATERIA
Vmm50i2121kama31	
Vhs25m0regin05	
Vmm80i1111kama21	
Vmm2ci2010kama41	VMM ELECTROMAGNETIC FLOW METER, FLOW RATE 0...4980 GPM, NOMINAL DIAMETER, CONNECTION: ANSI B16.5 150# RF, FLANGE MATERIAL: STAINLESS STEEL, LINING MATE
Vmmv3i2111kama21	
Vmm2ci2012gama21	VMM ELECTROMAGNETIC FLOW METER, FLOW RATE 0...4980 GPM, NOMINAL DIAMETER, CONNECTION: ANSI B16.5 150# RF, FLANGE MATERIAL: STAINLESS STEEL, LINING MATE
Vmm80i2110gama21	
Vhs10m	
Vmm65i1122gama21	
Vmm40i1120gama21	
Vmm32i2112kama31	
Cpr0400	PRECISION, 0.01% FS, RELATIV (PR)0.400 BAR
Vmm32i2022kama31	
Vz004alv31i00s	
Vmm65i2112gama21	
Ucmav	
Vmmv3i1011kama21	
Vmmv3i1112gama21	