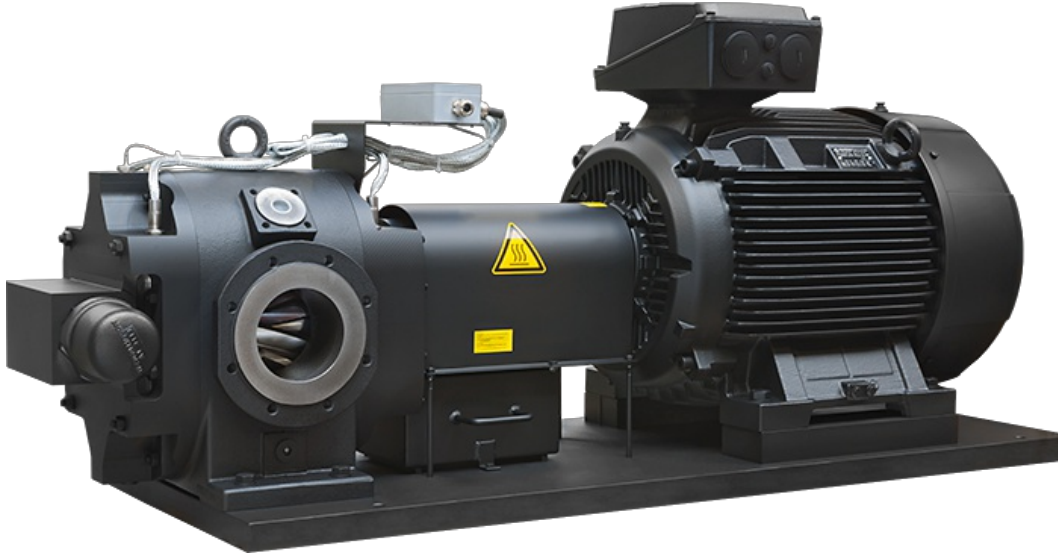


Steimel

Garanti: 12 ay
Bu rne ait Trkiye ii kapı teslim fiyat ve teslim sresi ieren teklifimizi almak iin info@yursat.com.tr e-posta adresine baŐvuru yapabilir ya da ayrıntılı bilgi iin +90 224 240 03 04 numaralı telefonumuzdan bizlere ulaŐabilirsiniz. **Steimel** Markası, tedarik sresi iin ltfen bizimle iletiŐime geiniz.

Firmamız Steimel Trkiye Distribtr veya temsilcisi deĐildir. Firmamız sipariŐ durumunda, belirtilen rnlerde sadece Orjinal ve yeni rn teklifi sunmaktadır. Bu sitede gsterilen zel marka adları ve ticari markalar ilgili sahiplerinin mlkiyetindedir, talep durumunda kaldırılmaktadır.



rn	Aıklama
TF4/70 SERİ NR: 1PU111689-3	
SF6/132RD	BZP056132RD--151R SF6/132RD, gear pump FKM, 2-16 bar, SAE 2 1/2 Gear pump: SF 6/132 RD Article no. : BZP056132RD--151R Dimension sheet: DMB056D-01R Spare parts list: DET056132RD--150R Suction and pressure connection: SAE 2 ½ Housing parts: EN-GJL-250 (GG 25) Waves: 16 Mn Cr S 5, egh. Gears: EN-GJS-400-15 (GGG-40), ionitrated, helical toothed Storage: Multi-layer MD Shaft seal: Radial shaft seal ring Elastomers: FKM Pumped medium: Lubricating oil Viscosity: 50-5000 cSt. Temperature: 10-60°C Flow rate: approx. 185 l/min. Pressure: 5 bar Speed: 1450 rpm. Pressure relief valve: Opening pressure 8 bar Direction of rotation: clockwise Trial run: yes, with HLPD 46 Paint finish: primed RAL6011 (HDO058) with free wave end Type plate: ETY924-DE--PE01
RAJA-LOVEJOY---A19.19H7-N1 ALU	COUPLING
RAJA-LOVEJOY---A19.19H7-14H7 ALU	COUPLING
RAJA-LOVEJOY---A24/32.28-24 ALU	COUPLING
	Gear pump: SF 3/32 R Article no. : BZP053032R --- 150L

SF 3/32 R	Dimension sheet: DMB053-02 Spare parts list: DET053032R --- 150L Suction and Pressure connection: SAE 1 ½ Material design: Housing parts: EN-GJL-250 (GG-25) Pinion shafts: 16MnCrS5, hardened helically toothed, flank ground Storage: multilayer MD Shaft sealing: radial shaft sealing ring Elastomers: FKM Pumped medium: lubricating oil Viscosity: 50-5000 cSt. Delivery data Q: 50 l / min. p: 5 bar -- n: 1450 rpm Test run: Yes Direction of rotation: left Painting: primed RAL6011 (HDO058) Type plate: ETY924-D-E - PE01 with free shaft end
ASF2-10RD-190140R	A-SF2 / 10RD-VLFM, pump unit, 2-20 bar 0.75 kW, 1000, 220 / 380V, 50Hz, IP55, F, B5, IE3 Gear pump unit: SF 2/10 RD - VLFM Article no. : ASF2-10RD-190140R Dimensional drawing: DPA052D-090LFM-R31 Spare parts list: DET052010RD - 050R Suction and pressure connection: G ¾ Pressure relief valve: 6 bar opening pressure Material design: Housing parts: EN-GJL-250 (GG-25) Pinion shafts: case-hardening steel 16MnCrS5 helical teeth, flank ground Shaft sealing: radial shaft sealing ring Elastomers: NBR Storage: multilayer MD Pumped medium: lubricating oil Viscosity: 50-150 cSt. Temperature: 10-60 ° C. Delivery rate: approx. 10 l / min Pressure: 5 bar Speed: 950 rpm
SF2/8RD	BZP052008FLE-150R Gear pump FKM, 2-20 bar, G 1 / SAE1 Gear pump: SF 2/8 RD Article no. : BZP052008FLE-150R Dimension sheet: DMB052D-FLE01R Spare parts list: DET052008RD - 150R Suction and pressure connection: G 1 - SAE 1 Housing parts: EN-GJL-250 (GG-25) Pinion shafts: 16MnCrS5, egh., Helical cut. Storage: multilayer MD Shaft sealing: radial shaft sealing ring Elastomers: FKM Pumped medium: lubricating oil Viscosity: 50-5000 cSt Temperature: 10-60 ° C Delivery rate: approx. 12 l / min. Pressure: 5 bar Speed: 1450 rpm. Pressure relief valve Opening pressure: 8 bar Setting range: 2-20 bar Direction of rotation: right Test run: yes, with HLPD 46 Painting: primed (HDO058, green) with free shaft end. Type plate: ETY924-D-E - PE01 as supplied under 93-754 statistical commodity number: 84136039 Weight: approx. 7 kg country of origin: Germany
SF 2/20 RD-VLFM	
ASF3-50RD-170039R	A-SF3 / 50RD-VLFM, pump unit, 2-18 bar 4.0 kW, 1500, 230 / 400V, 50Hz, IP55, F, IE3, B5 Gear pump unit: SF 3/50 RD - VLFM Article no. : ASF3-50RD-170039R Dimension sheet: DPA053D-112LFM-R31 Spare parts list: DET053050RD - 165R Suction and pressure connection: SAE 1 1/2 Housing parts: EN-GJL-250 (GG-25) Pinion shafts, noise opti. : 16MnCrS5, egh., Helical teeth Storage: multi-shift Shaft sealing: radial shaft sealing ring Elastomers: FKM Pumped medium: lubricating oil Viscosity: 50-5000 cSt Temperature: 10-60 ° C Delivery rate: approx. 70.8 / 84.9 l / min Pressure: 5 bar Speed: 1450/1740 rpm Pressure relief valve Setting range: 2-18 bar Opening pressure: 8 bar Direction of rotation: right Test run: yes, with HLPD 46 Coupling: BKUA055-1928-301 Pump bracket with foot: BLF053250128LA21 Three-phase motor: LDM112-04-903 (Birkenbeul) Motor data: Power 1/2: 4.0 / 4.6 kW Speed 1/2: 1500/1800 rpm Voltage 1: 230/400 volts at 50 Hz Voltage 2: 265/460 volts at 60 Hz Efficiency class: IE3 Additional label (without IE3) for: Voltage: 220-240 / 380-420 volts at 50/60 Hz : 250-280 / 440-480 volts at 60 Hz Protection class: IP 55 Insulation class: F Design: B 5 Aggregate painting: primed HDO058 - green Type plate: ETY924-D-E - PE02
5AP90S - 4	8APE90S-4 IE3 (Nachfolgetyp!)

MZT190	KZT-203L
KZT-203L	
BZP053032R---150R	<p>SF3/32R, gear pumpFKMGear pump : SF 3/32 RItem No. : BZP053032R---150RDimension sheet : DMB053-02Spare parts list : DET053032R---150Suction and pressure connection : SAE 1 ½Material design:Housing parts : EN-GJL-250(GG-25)Pinion shafts : 16MnCrS5,hardenedhelical geared,flank groundBearing : Multi-layer MDShaft seal : Radial shaft seal ringElastomers : FKMPumped liquid : Lubricating oilViscosity : 50-5000 cSt.Delivery dataQ : 11 l/min.p : 4 barn : 313 l/minTest run . yesDirection of rotation : rightPainting : primed RAL6011 (HDO058)Type plate : ETY924-D-E--PE01with free shaft end</p>
BDV-G1/2--10-005	<p>Pressure relief valve G 1/2NBR, 1-10 bar with disc springs + lock nutPressure relief valve : G ½Article no. : BDV-G1/2--10-005Sectional drawing : DSZ-DV-05Spare parts list : DET-DV-G1/2-005Connections : G 1/2Body : EN-GJL-250(GG-25)Valve plug : 16MnCrS5Elastomers : NBRActuation by means of : disc springsPressure range (adjustable) : 1-10 barOpening pressure : 3 ±0,2 barTest : Adjustment and function testPaint : Primed (HDO058, green)Nameplate : ETY924-DBV--PE01</p>
ASF6-132RD200118R	<p>A-SF6/132RD-VLFM, pump unit, 2-16 bar 7.5kW, 1500, 400/690V, 50Hz, IP55, B5, IE3, AT 50°C Gear pump unit : SF 6/132 RD - VLFM Article no. : ASF6-132RD200118R Dimension drawing : DPA056D-132LFM-R31 Parts List : DET056132RD--165R Suction and pressure connection: SAE 2 ½ Housing parts : EN-GJL-250 (GG-25) Shafts : 16 Mn Cr S 5, hardened gears, noise-optimized : EN-GJS-400-15 (GGG-40) helical and ionitrided Shaft seal : Radial shaft seal Elastomers : FKM Storage : Multilayer MD Pumping medium : lubricating oil Viscosity : 50 - 5000 cSt. // Temperature : 10 - 60°C Flow rate : 185 l/min. Pressure : 5 bars // Speed : 1450 rpm. pressure relief valve Opening pressure : 8 bar Setting range : 2-16 bar Direction of rotation : right Trial run : yes, with HLPD 46 Coupling : BKUA065-2438-301 Bellhousing with foot : BLF056300168LA21 Three-phase motor : LDM132-04-106 Power : 7.5 kW Speed : 1500 rpm. Voltage / Frequency : 400/690 volts at 50 Hz Efficiency class : IE3 Degree of protection: IP 55 Insulation class : F Ambient temperature : 50°C Design: B 5 Aggregate paint : PRIMED Nameplate : ETY924-D/E--PE02 Gesamtgewicht ca. 100kg Abmessung 120x80 cm</p>
ASF4-80RD-162584R	<p>A-SF4/80RD-VLFM, pump unit, 2-16 bar 5.5 kW, 1500, 400/690V, IE3, 50Hz, IP55, Iso.F 1) 8 weeks Gear pump unit : SF 4/80 RD - VLFM Article no. : ASF4-80RD-162584R Dimension sheet : DPA054D-132LFM-R31 Parts List : DET054080RD--165R Suction and pressure connection: SAE 2 Housing parts : EN-GJL-250 (GG-25) Waves : 16 Mn Cr S 5, egh. Gears : EN-GJS-400-15 (GGG-40), ionitrid, helical gears Gearing : noise-optimized Storage : Multilayer MD Shaft seal : Radial shaft seal Elastomers : FKM Pumping medium : lubricating oil Viscosity : 50 - 5000 cSt. Temperature : 10 - 60°C Flow rate: 104.7 / 125.6 l/min. Pressure : 5 bars Speed : 1450 / 1740 rpm. pressure relief valve Opening pressure : 8 bar Setting range : 2-16 bar Direction of rotation : right Trial run : yes, with HLPD 46 Coupling : BKUA065-2438-301 Bellhousing with foot : BLF054300168LA21 Three-phase motor : LDM132-04-904 (Birkenbeul) Engine data: Power 1/2 : 5.5 / 6.3 kW Speed 1/2 : 1500 / 1800 rpm. Voltage / Frequency 1 : 400/690 volts at 50 Hz Voltage / Frequency 2 : 460 volts at 60 Hz Efficiency class : IE3 with additional label (without IE3) for</p>

	<p>Voltage / Frequency : 380-420/660-720 V at 50/60 Hz 440-480 volts - triangle at 60 Hz Degree of protection: IP 55 Insulation class : F Design: B 5 Coating : primed Nameplate : ETY924-D-E--PE02</p>
SF 4/80 RD - LFM	<p>ASF4-80RD-130695R Article no. : ASF4-80RD dimension sheet : DPA054D-130695R Parts List : DET054080RD--165R Suction and pressure connection: SAE 2 Housing parts : EN-GJL-250 (GG-25) Waves : 16 Mn Cr S 5, egh. gears, noise-optimized : EN-GJS-400-15 (GGG-40), ionitrid, helical gears Storage : Multilayer MD Shaft seal : Radial shaft seal Elastomers : FKM Pumping medium : lubricating oil ISO VG320 Viscosity : 50-5000 cSt. Temperature : 10-60°C Flow rate: approx. 104.7 l/min. Pressure : 5 bars Speed : 1450 rpm. pressure relief valve Opening pressure : 6 bar Setting range : 2-16 bar Direction of rotation : right Trial run : yes, with HLPD 46 Coupling : BKUA055-2428-301 Bellhousing/foot (IJN250) : BLF054250138LA11 Three-phase motor : BLDM112-04- (Birkenbeul) Engine data: Power : 4 kW Speed : 1500 rpm. Voltage / Frequency : 220/380 volts at 50 Hz Efficiency class: IE3 (in the standardized range) with additional label (without IE3) for Power: 3.8 kW (at 1750 m above sea level) Voltage : 380 V - Star -15%/+10% Frequency : 50Hz +/-3% Installation altitude: 1750 m above sea level. NN Degree of protection: IP 65 Special feature: increased air humidity, 100% at 40°C (30-60 g water per m³ air) (C19) Insulation class : F Design: B 5 Coating : primed RAL6011 (HDO058, green) Nameplate : ETY924-D/E--PE02</p>
A-SF3/50RD-VLFM, SERI NO:1.PU161851	
SF2/13RD-VLFM, SERI NO:1.PU152842-1	
MODEL: A-SF3/50R	SERI NO:1.PU161851 (5FD)
SF2/13RD-VLFM	SERI NO:1.PU152842-1 (5FD SEP.)
BZP053050RD--165R	<p>SF3/50RD-O, gear pump FKM, 2-18 bar, noise-optimized Gear pump : SF 3/50 RD-O Article no. : BZP053050RD--165R Dimension sheet : DMB053D-02R Parts List : DET053050RD--165R Suction and pressure connection: SAE 1 ½ (40) Housing parts : EN-GJL-250 (GG-25) Pinion shafts, noise-optimized: 16MnCrS5, egh., helical teeth, flank ground Storage : Multilayer MD Shaft seal : Radial shaft seal Elastomers : FKM Pumping medium : lubricating oil Viscosity : 50-5000 cSt. Temperature : 10-60°C Flow rate: approx. 70.8 l/min. Pressure : 5 bars Speed : 1450 rpm. Pressure relief valve: 8 bar opening pressure (setting range 2 - 18 bar) Direction of rotation : right Trial run : yes, with HLPD 46 Coating : primed (HDO058, green) with free shaft end. Nameplate : ETY924-D-E--PE01</p>
ASF2-13RD-170140R	<p>A-SF2/13RD-VLFM, pump unit, 2-20 bar 1.1kW, 1500, 400/690V, 50Hz, IP55, Iso.F, B5, IE3, PTC Gear pump unit : SF 2-13 RD - VLFM Article no. : ASF2-13RD-170140R Dimension sheet : DPA052D-090LFM-R33 Parts List : DET052013RD--165R Suction and pressure connection: G 1 / SAE 1 Housing parts : EN-GJL-250 (GG-25) Pinion shafts, noise-optimized. : 16MnCrS5, etc., helical Storage : multi-layer Shaft seal : Radial shaft seal Elastomers : FKM Pumping medium : lubricating oil Viscosity : 50-5000 cSt. Temperature : 10-60°C Flow rate : 19 l/min. Pressure : 5 bars Speed : 1450 rpm. pressure relief valve Setting range : 2-20 bar Opening pressure : 8 bar Direction of rotation : right Trial run : yes, with HLPD 46 Coupling : BKUA040-1424-301 Bellhousing with foot : BLF052200110LA21 Three-phase motor : LDM090-04-197 Make : Siemens Power : 1.1 kW Speed : 1500 rpm Voltage :</p>

	<p>400 /690 volts Frequency : 50Hz Efficiency class : IE3 Degree of protection: IP 55 Motor protection : 1 PTC thermistor for shutdown Insulation class : F Special feature : Additional sign for Voltage tolerance \pm 10% Design: B 5 Aggregate painting : Primer HDO058 - green Nameplate : ETY924-D-E--PE02</p>
BZP052013RD--165R	<p>SF2/13RD-O, gear pump FKM, 2-20 bar noise-optimized Gear pump : SF 2/13 RD STEIMEL item no. : BZP052013RD--165R Dimension sheet : DMB052D-04R Parts List : DET052013RD--165R Suction and pressure connection: G 1 / SAE 1 Housing parts : EN-GJL-250 (GG-25) Pinion shafts, noise-optimized. : 16MnCrS5, egh., beveled Storage : Multilayer MD Shaft seal : Radial shaft seal Elastomers : FKM Pumping medium : lubricating oil Viscosity : 50-5000 cSt. Temperature : 10-60°C Flow rate: approx. 18.5 / 22 l/min. Pressure : 5 bars Speed : 1450 / 1740 rpm. pressure relief valve Opening pressure : 8 bar Setting range : 2-20 bar Direction of rotation : right Trial run : yes, with HLPD 46 Aggregate painting : Primer HDO058 Nameplate : ETY924-D-E--PE01 * Net weight: approx. 6 kg. Customs tariff number: 84 13 60 39</p>
ASF2-8RD--190127R	<p>A-SF2/8RD-VLMF, pump unit, 2-20 bar Gear pump unit : SF 2/8 RD - VLMF Article no. : ASF2-8RD--190127R Dimension sheet : DPA052D-080LMF-R31 Parts List : DET052008RD--150R Suction and pressure connection: G ¾ Housing parts : EN-GJL-250 (GG-25) Pinion shafts: 16MnCrS5, egh., Storage : multi-layer Shaft seal : Radial shaft seal Elastomers : FKM Pumping medium : lubricating oil Viscosity : 50-5000 cSt Temperature : 10-60°C Flow rate: approx. 11 / 13.2 l/min. Pressure : 5 bars Speed : 1450 / 1750 rpm. pressure relief valve Opening pressure : 6 bar Setting range : 2-20 bar Direction of rotation : right 0.55/0.66 kW, 1500/1800, 50/60Hz, IP55, F, B3/B5 Test run : yes, with HLPD Coupling : BKUA040-1419-301 Bellhousing : BLA052200100LA21 Three-phase motor : LDM080-04-158 (Birkenbeul) Engine data: Power : 0.55 / 0.66 kW Speed : 1500 / 1800 rpm. Voltage : 230/400 volts at 50 Hz 460 volts at 60 Hz Efficiency class : IE2 Degree of protection: IP 55 Insulation class : F Design: B 3 / B 5 Aggregate paint : primed Nameplate : ETY924-D/E--PE02</p>
ASF6-132RD200118	<p>A-SF6/132RD-VLFM, pump unit, 2-16 bar 7.5kW, 1500, 400/690V, 50Hz, IP55, B5, IE3, AT 50°C Gear pump unit : SF 6/132 RD - VLFM Article no. : ASF6-132RD200118R Dimension drawing : DPA056D-132LFM-R31 Parts List : DET056132RD--165R Suction and pressure connection: SAE 2 ½ Housing parts : EN-GJL-250 (GG-25) Shafts : 16 Mn Cr S 5, hardened gears, noise-optimized : EN-GJS-400-15 (GGG-40) helical and ionitrided Shaft seal : Radial shaft seal Elastomers : FKM Storage : Multilayer MD Pumping medium : lubricating oil Viscosity : 50 - 5000 cSt. Temperature : 10 - 60°C Flow rate : 185 l/min. Pressure : 5 bars Speed : 1450 rpm. pressure relief valve Opening pressure : 8 bar Setting range : 2-16 bar Direction of rotation : right Trial run : yes, with HLPD 46 Coupling : BKUA065-2438-301 Bellhousing with foot : BLF056300168LA21 Three-phase motor : LDM132-04-106 Power : 7.5 kW Speed : 1500 rpm. Voltage / Frequency : 400/690 volts at 50 Hz Efficiency class : IE3 Degree of protection: IP 55 Insulation class : F Ambient temperature : 50°C Design: B 5 Aggregate paint : PRIMED Nameplate : ETY924-D/E--PE02</p>
P/F GEAR OIL PUMP	<p>TYPE.TFL8-170 GDG-VLFM NOTE:AUXILLARY OIL PUMP IS USED ON LUBRICATED OIL SYSTEM OF OFF GAS COMPRESSOR</p>

	COMPRESSOR MODEL: BX-45-80/63-4S2 SUPPLIER:STEIMEL GMBH CO (GERMANY) PUMP COMPLETE
ASF6-120GD220530R	A-SF6/120GD-VLFM, pump unit, 2-16 bar 5.5kW, 1500, 400/690V, IE3, 50Hz, IP55, F, B5 Gear pump unit : SF 6/120 GD-VLFM Article no. : ASF6-120GD220530R Dimension drawing : DPA056D-132LFM-R31 Parts List : DET056120GD--150R suction and Pressure connection : SAE 2 ½ Material finish: Housing parts : EN-GJL-250 (GG 25) Shafts : 16 Mn Cr S 5, case hardened Gears : EN-GJS-400-15 (GGG-40), helical and ionitrided Shaft seal: mechanical seal M 2/25+V+R Elastomers : FKM Storage : Multilayer MD Pumping medium : lubricating oil Viscosity : 50-2000 cSt. Temperature : 10-60° C Flow rate: approx. 175 l/min. Pressure : 2 bars Speed : 1450 rpm Direction of rotation : right Pressure relief valve: 4 bar opening pressure Bellhousing with foot : BLF056300168LA21 Coupling : BKUA065-2438-301 Three-phase standard motor: IEC 132 Item No. : LDM132-04-904 engine data Power : 5.5 kW Speed : 1450 rpm Voltage : 400/690 volts Efficiency class : IE3 Frequency : 50Hz Degree of protection: IP 55 Insulation class : F Design: B 5 Aggregate paint : primed Nameplate : ETY924-D-E--PE02
Neue Pumpe	Max. Disch. press : 8bar Fluid: Bitumen Capacity: 880Kg/m3 Temp: 190 C Lubrication: oil Head: 50m Seal: Mechanical seal (Motor) 3PH 380V-50HZ IP55 or54
SF3/50R-L	
SF4/63R-L	
ASF6-132RD200118R	A-SF6/132RD-VLFM, pump unit, 2-16 bar 7.5kW, 1500, 400/690V, 50Hz, IP55, B5, IE3, AT 50°C Gear pump unit : SF 6/132 RD - VLFM Article no. : ASF6-132RD200118R Dimension drawing : DPA056D-132LFM-R31 Parts List : DET056132RD--165R Suction and pressure connection: SAE 2 ½ Housing parts : EN-GJL-250 (GG-25) Shafts : 16 Mn Cr S 5, hardened gears, noise-optimized : EN-GJS-400-15 (GGG-40) helical and ionitrided Shaft seal : Radial shaft seal Elastomers : FKM Storage : Multilayer MD Pumping medium : lubricating oil Viscosity : 50 - 5000 cSt. Temperature : 10 - 60°C Flow rate : 185 l/min. Pressure : 5 bars Speed : 1450 rpm. pressure relief valve Opening pressure : 8 bar Setting range : 2-16 bar Direction of rotation : right Trial run : yes, with HLPD 46 Coupling : BKUA065-2438-301 Bellhousing with foot : BLF056300168LA21 Three-phase motor : LDM132-04-106 Power : 7.5 kW Speed : 1500 rpm. Voltage / Frequency : 400/690 volts at 50 Hz Efficiency class : IE3 Degree of protection: IP 55 Insulation class : F Ambient temperature : 50°C Design: B 5 Aggregate paint : PRIMED Nameplate : ETY924-D/E--PE02 + SAE screw-in flange with hole and Plug SAE 21/2 A= G 21/2 FKM
Gear pump Steimel SF 4/80 RD-VLFM	
PSF4/80RD-121921R	P-SF4/80RD-VLF, gear pump, 2-16 bar FKM, noise-optimized, LF 300x168 for IEC 132 Gear pump : SF 4/80 RD - VLF Article no. : PSF4/80RD-121921R Dimension sheet : DPA054D-132LFM-R31 Parts List : DET054080RD-165R Suction and pressure connection: SAE 2 Housing parts : EN-GJL-250 (GG-25) Waves : 16 Mn Cr S 5, egh. gears, noise-optimized : EN-GJS-400-15 (GGG-40), ionitrid, helical gears Storage : Multilayer MD Shaft seal : Radial shaft seal Elastomers : FKM Pumping medium : lubricating oil Viscosity : 50-5000 cSt. Temperature : 10-60°C Flow rate 1 / 2: approx. 70 / 107 l/min. Pressure : 5 bars Speed 1 / 2: 950 / 1450 rpm. Opening pressure : 8 bar Setting range : 2-16 bar Direction of

	rotation : right Trial run : yes, with HLPD 46 Coupling : BKUA065-2438-301 Bellhousing with foot : BLF054300168LA21 suitable for three-phase motor Design / size: B 5 / 132 Coating : without Nameplate : ETY924-D/E--PE01 Motor mounting screws : 4 x IBO12X040VZ, loose in Pump carrier screwed in
SF 3/50 RD-VLFM	
SF 8/300 RD-VLF	
SF 2/13 RD-VLFM	
PSFE10/1000-064700L	SFE10/1000PD Z-Pumpe 3-8 bar GD,EC-HA,MP,2x630W,400V,PT100,Buramex SF, counterclockwise rotation Gear pump : SFE10/1000 PD Article no. (pump only) : PSFE10/1000-064700L Parts List (pump only) : DET410E-064700 Dimension sheet (pump only) : DPP410E-02 Suction and discharge connection : SAE 5 Pressure relief valve: 4 bar opening pressure Material finish: Housing parts : EN-GJL-250 (EN-JL 1040) Lantern with foot : EN-GJS-400-15 (EN-JS 1030) Shafts : 16MnCrS5 , case hardened Gears : EN-GJS-400-15 (EN-JS 1030), helically cut and ionitrided Shaft sealing : Buramex SF packing Bearing bushes : Multilayer MD with electrical housing heating 2 cartridge heaters, each 630 watts, 400 volts, 50 Hz. cartridge heaters (silicone encapsulated) , with temperature sensor PT100 in the sealing area, wired in the common terminal box Switch-on temperature: 115 ° C Switch-off temperature: 130 ° C (on-site control) Delivery medium : pure bitumen Viscosity : 200 cSt.. Temperature : 130 degrees C. Flow rate: approx. 960 l/min. Pressure : 3 bars Speed : 1000 rpm. Trial run : yes Direction of rotation: right and left Main direction of rotation: l i n k s Painting : primed RAL9005 (HDO060) black Nameplate : ETY924-D-E-PE01 with free shaft end
SF6-132RD-VLFM	50030426-1000 pump
IDP136,12X3,53T	O-Ring 136,12 x 3,53 mm, Teflon (PTFE)
PSF8-300RD160659R	P-SF8/300RD-VLF, gear pump, 2-16 bar FKM, LF 350x228 for motor IEC 180, B5
SF3 /50 RD-VL	
ASF3-50RD-182413R	A-SF3/50RD-VLFM, pump unit, 2-18 bar 4.0 kW, 1500, 230/400V, 50Hz, IP55, F, B5, IE3, steel base
ASF3-50RD-170039R	A-SF3/50RD-VLFM, Pumpenaggregat, 2-18 bar 4,0 kW, 1500, 230/400V, 50Hz, IP55, F, IE3, B5
SF 6/132RDVLFM	
BZP056132RD--151R	SF6/132RD, Gear pump FKM, 2-16 bar, SAE 2 1/2
IQR3646	Packing ring 6335 Buramex SF 36 x 46 x 5 mm, straight cut, silicone-free, pre-pressed
IDP053,64X2,62V	O-Ring 70/80 Grad Shore 53,64 x 2,62 mm Viton
IDP125X5V	O-Ring 70/80 Grad Shore 125 x 5 mm Viton
IDP024X2V	O-Ring 70/80 Grad Shore 24 x 2 mm Viton
IDP022X2V	O-Ring 70/80 Grad Shore 22x2 mm Viton

IQR5163	Packing ring 6335 Buramex SF 51 x 63 x 6 mm, straight cut, silicone-free, pre-pressed
IDP032X2V	O-Ring 70/80 Grad Shore 32x2 mm Viton
LOW PRESSURE PUMP-COUPLED	Low pressure gear pump ,type TFL 8/140 ,delivery 342 lt/min. at 2,5 bar pressure supplied with relief valve adjusted to 8 bar direct coupled with
HYDRAULIC PUMP GEAR SF6/132RD	
PSF8/212RD121829R	P-SF8/212RD-VL, gear pump, 2-16 bar FKM, LA 350x228 for motor IEC 180, V1 or B3/B5 Material number: 000.001.158.973 Gear pump: SF 8/212 RD - VL Article number: PSF8/212RD121829R Dimension sheet: DPA058D-180LM-R31 Spare parts list: DET058212RD--150R Suction and pressure connection: SAE 3 Housing parts: EN-GJL-250 (GG-25) Shafts: 16 Mn Cr S 5, hardened Gears: EN-GJS-400-15 (GGG-40) helical gears and ion-nitrided Shaft seal: radial shaft seal Elastomers: FKM Bearing: multi-layer MD Conveying medium: lubricating oil Viscosity: 50-5000 cSt. Temperature: 10-60°C Flow rate: approx. 300 l/min Pressure: 10 bar Speed: 1450 1/min. Pressure relief valve: 12 bar opening pressure Adjustment range: 2-16 bar Direction of rotation: right Test run: yes, with HLPD 46 Pump support: BLA058350228LA01 Coupling: BKUA095-2848-301 suitable for three-phase standard motor: Design / size: V1 or B3 / B5 / IEC 180 Paint: primed Nameplate: ETY924-D-E--PE01 Incl. motor mounting screws: 4 x IBO16x040/10.9VZ
SF3/32RD-LFM	
BZP053050RD--165R	SF3/50RD-O, gear pump FKM, 2-18 bar, noise-optimized
TYPE: SKKM4-0500P	Circulation Pump
EFZ304-----EC01	Guide pinion
EKO324-0500-XO06	Rotary piston
EAW324-0500PXE01	Drive shaft
EGW324-0500PXE01	Counter shaft
IDB33109CY	Conic roller bearing
SF 3/50 RD - VLFM	
9010.020.0415	GEAR PUMP BRAND:GEBR STEIMEL TYPE:SF 3 / 50 RD
PTFL8-12RD151176R	TFL8-120RDG gear pump FKM,GD,EC-HA,angled,MD,6 -15 bar, noise optimized length 360.00 width 250.00 height 340.00 Gear pump: TFL 8-120 RDG Article number: PTFL8-12RD151176R Dimension sheet: DMB00XFL-01 Spare parts list: DET008FL120RD155R Suction and pressure connection: DN 80, PN 16 Material design: Housing parts: EN-GJL-250 (GG-25) Shafts: 16MnCrS5, egh. Gears, noise-optimized: EN-GJS-400-15 (GGG-40) helical gears and ionitrided Shaft seal: radial seal Elastomers: FKM Storage: Multi-layer MD Pumped medium: lubricating oil Viscosity: 50-5000 cSt Temperature: 10-60°C Delivery rate: approx. 280 / 336 l/min. Pressure: 5 bar Speed: 950 / 1150 rpm Pressure relief valve: opening pressure 12 bar Direction of rotation: right Test run: yes, with HLPD 46 Coating: primed (HDO058, green) With free shaft end. Type plate: ETY924-DE--

	PE01
SF / RD-O	
EDI008FL-100IA01	Seal TFL 8 A4 AFM 30 / Uni Blue
IDI040X055X06V	Radial shaft seal BABSL 40x55x6mm Mat. 75 FKM 595 Original Freudenberg
PSF6/180RD121883R	P-SF6/180RD-VL, gear pump, 2-16 bar FKM, LA 350x188 according to VDMA for motor IEC 160, V1 Gear pumps: SF 6/180 RD - VL Article no. : PSF6/180RD121883R Dimension sheet: DPA056D-160LM-R32 Spare parts list: DET056180RD--165R Suction and pressure connection: SAE 2 ½ Housing parts: EN-GJL-250 (GG-25) Shafts: 16MnCrS5, egh. Gears, noise-optimized: EN-GJS-400-15 (GGG-40), ionitrided, helical toothed Storage: Multi-layer MD Shaft seal: Radial shaft seal Elastomers: FKM Pumped medium: lubricating oil Viscosity: 50-5000 cSt Temperature: 10-60°C Delivery rate: approx. 125 / 165 l/min. Pressure: 5 bar Speed: 715 / 950 1/min. pressure relief valve Opening pressure: 12 bar Adjustment range: 2-16 bar Direction of rotation: right Test run: yes, with HLPD 46 Clutch: BKUA095-2442-301 pump housing: BLA056350188LA21 suitable for three-phase motor Motor size and design: IEC 160, B 5 or V1 Coating: Primer HDO058 Type plate: ETY924-DE--PE01 Engine mounting screws: 4 pieces IBO16x035/10.9VZ loosely fitted into the pump housing. * weight net / each ; approx. 35kgs.
ASF2-8RD--171407L	A-SF2/8RD-VLFM, pump unit, 2-20 bar 0.75 kW, 1500, 230/400V, 50Hz, IP55, IE3, B5, KK print page
SF4/80RD-VLFM	
BZP010FL210RD051L	TFL10-210RDG gear pump NBR, GD, EC-HA, MP 3-8 bar Gear pump: TFL 10-210 RDG Article no.: BZP010FL210RD051L Dimension sheet: DMB010FL-01 Spare parts list: DET010FL210RD051 Suction and pressure connection: DN 150 Pressure relief valve: 8 bar opening pressure Material design: Housing parts: GG-25 Shafts: 16MnCrS5 Gears: GGG-40, helical gears and ionitrided Shaft seal: radial seal Elastomers: NBR Storage: Multi-layer MD Pumping medium: lubricating oil Delivery rate: 1000 rpm. Pressure: 2.5 bar Speed: 1170 rpm. Direction of rotation: left Paint: primed RAL6011 (HDO058) Nameplate: ETY924-DE--PE01
ABML2-36R-171017U	A-BML2-36R, gear pump unit 1.1 kW, 1500, 230/400V, 50Hz, IP55, Iso.F, B5, IE3 Gear pump unit: BML 2-36 R Article No.: ABML2-36R-171017U Dimension sheet: DPA042--090BML--32 Spare parts list: DET042-36R---001 Suction and pressure connection: G ¾ Housing parts: EN-GJL-250(GG-25) Pinion shafts: 42CrMo4V, nitrided straight toothed Storage: Multi-layer MD Shaft seal: radial shaft seal Elastomers: NBR Pumping medium: lubricating oil Cold start temperature: 15° C Operating temperature: max. 60° C Viscosity: 50- max 3300 cSt. Flow rate: approx. 22 l/min Pressure: 5 bar Speed: 1450 rpm Direction of rotation: right and left Test run: yes, with HLPD46 Clutch: BKUP069-1624-001 Pump support with foot: BLF043200126GD01 with three-phase motor: LDM090-04-903 Power: 1.1 kW Speed: 1500 rpm Voltage: 230/400 Volts Frequency: 50 Hz Protection class: IP 55 Insulation class: F Efficiency class: IE3 Design: B 5 Aggregate paint: primed HDO058 green Nameplate: ETY924-DE--PE02

PSF8/300RD122137R	P-SF8/300RD-VLF, gear pump, 2-16 bar FKM, LA 350x228 for motor IEC 180, B5
PSF3/50RD-122458R	P-SF3/50RD-VL, gear pump, 2-18 bar suitable for motor IEC 132, B5 or V1, noise-optimized
PUMP SF 3/50 RD - VLFM	
ASF2-8RD--170044L	A-SF2/8RD-VLFM, pump unit, 2-20 bar 0.75kW, 1500, 230/400V, 50Hz, IP55, F, IE3, B5
BZP053050RD--151R	SF3/50RD, gear pump FKM, 2-18 bar
Asf2/20rd-113826l	
Bzp052020rd-151r, Sf2/20rd	
Asf4/63rd-121809r	
Sf2-16rd	
Ldm132m/4-B5-Vf1	
A-Bmf1-10gd	
Sf-4/112-Rd-Vl	
Idp100x4v	
Seal Kit For Sf 8 212 Rd-Vl	
Pump Mzt 190	
000.001.159.636	
Pzz	
Bdv-G11 /2-25-007 Nbr	
Asf3/50gd-123484l	
279001-6342	
Asf6-120rd133272r	
Pump T	
Pump T10	
5ao90l-6	
Bioa027v	
Bzp052020rd-051r Sf 2/20 Rd	
Asf3/50rd-112451r Dpa053d-112lfm-R31 Sf 3/50 Rd - Vlfm	
Sf4/63rd-Vlfm	
Pump Sf	
F5958 , Size : 4 , (Sf 2/20 Rd - Vlfm)	

8ape132s-4-Ie3
Asf3/40rd-111737l
Bzp054112rd--151r
:Gr90-Smt168-1500l-Rf3 Aluminum
Sf2-13rd
Pu140332 Bzp054080rd--165r
Tfls6/110g/Lms
Asf2/13rd-111677r
Tf 10-180 Rdg
Sf 3/50 Rd - Vlfm
Sf6-120r-Vlf
Asf3/40rd-130990l
Sf 8/212 Rd-Vl
Pump Gear F 5958 Size 10 (Sf6/180 Rd - Vlf)
Af 4/112 Rd-Vl
Sf 6-160 Rd-Vlfm
Itw15x16
Bzp053050rd-R Dmb053d-01r Sf 3/50 Rd
Asf2/16rd-113474l
Sf2-8rd
5ap132s 4(7aa) By 8ape132s-4-Ie3
Sf3/32rd-Vlfm
Asf2/20rd-111548r 000.001.153.223
Bzp052008rd--051r
Asf4/80rd-111959r
Idi025x047x06v
Asf3/25gd-123485r
Bzp056180rd-151
Sf 2/8 Rd-Vfm F 5958 For 7135c
Ear053032045ec55
1152452
A-SF2 / 8RD-VLFM, pump set, 2-20 bar 0.62kW , 1500, 230 /

Asf2-8rd--170161r	400V, 50Hz, IP55, Iso.F, UT 60 ° C Gear pump unit: SF 2/8 RD - VLFM Article no. : ASF2-8RD - 170161R Dimension sheet: DPA052D-080LFM-R32 Spare parts list: DET052008RD - 165R Suction u. Pressure connection: G 1 / SAE 1 Housing parts: EN-GJL-250 (GG-25) Pinion shafts, noise optimized. : 16MnCrS5, egh., Oblique. Storage: multi-layer Shaft seal: Radial shaft seal Elastomers: FKM Fluid: Lubricating oil Viscosity: 50-5000 cSt. Temperature: 10-60 ° C Flow rate: approx. 10.9 l / min. Pressure: 5 bar Speed: 1450 1 / min. Pressure relief valve Adjustment range: 2-20 bar Opening pressure: 8 bar Direction of rotation: right Trial run: yes, with HLPD 46 Coupling: BKUA040-1419-301 Pump carrier m. Foot: BLF052200100--03, walk in welded version Three-phase motor: LDM080-04-134 (birch bark) Engine data: Power 1/2: 0.75 / 0.8 kW Speed 1/2: 1500/1800 1 / min. Voltage / Frequency 1: 230/400 Volt at 50 Hz Voltage /
Bms24/24hrd,Sn.801134011	
Asf2/8rd-112775r	
Ldm090-04-901	
Pump Hkk	
Idi045x065x07v	
A-SF2/20RD-VLFM	pompa-motor
Asf6-120rd133272r (Ex. Sf6-132rd-Vlfm)	
Asf6/180rd062188	
Sf6/180 Rd-Vlfm, No.10, Mill G	
Pump Gmb	
Pump Tm	
Sf6-132rd	
Asf4-112rd171601r	A-SF4 / 112RD-LFM, pump set, 2-16 bar 7.5 kW, 1500, 400 / 690V, 50Hz, IP55, F, B5, IE3 Gear pump unit: SF 4/112 RD - LFM Article no. : ASF4-112RD171601R Dimension sheet: DPA054D-161948R Spare parts list: DET054112RD - 150R Suction u. Pressure connection: SAE 2 Housing parts: EN-GJL-250 (GG-25) Waves: 16MnCrS5 Gears: EN-GJS-400-15 (GGG-40) ionitriert, schr¼gverzahnt Storage: MD multilayer Shaft seal: Radial shaft seal Elastomers: FKM Fluid: Lubricating oil Viscosity: 50-5000 cSt Flow rate: 150 l / min Pressure: 5 bar Speed: 1450 1 / min Pressure relief valve Adjustment range: 2-16 bar Opening pressure: 8 bar Direction of rotation: right Coupling: BKUA065-2438-301 Bellhousings with feet: BLF054300168--01 Three-phase motor: LDM132-04-903 (BB) Power: 7.5 kW Speed: 1500 1 / min Voltage: 400/690 V Premium efficiency class: IE3 Frequency: 50 Hz Protection class: IP 55 Insulation class: F Design: B 5 Aggregate paint: Primer HDO058 - green Nameplate: ETY924-
Drehstrommotor 8ape132s-4-Ie3	8APE1325-4 NR.1108433 Power: 5.5 kW Speed: 1500 1 / min Voltage: 400/690 volts Frequency: 50 Hz Degree of protection: IP 55 Design: IM B5 / 300mm Thermal class "F" Nameplate stamping IE3: - 400/690 volts 50 Hz - 5.5 kW - 460 volts 60 Hz - 6.3 kW Motor with neutral additional rating plate without CE and IE3 marking: - 380-420 / 660-720 volts at 50/60 Hz - 440-480 volts at 60 Hz

Sf2/13 Gd-Vlfm
Bzpo52013rd-165r
000.000.850.184 , Asf6/180rd062188
Sf-2/13 Rd-Vlfm
Egr053032045ec55
Tfl 8/100 Rdg/Lfm-H
Bml 3- 40 R
Asf3/32rd-112158r
Gr45-Smt16b-Rf2-Aluminum
252825md01
24e2363var08
Sf2/8 Rd-Vlfm
Pump Kzt 170
Bzp053040r-165 Sf3/40r-O
Edi010---100ia03
Asf6/180rd Neu Mit Ie3
Asf2/20rd-123498r
Abmf2-10gd 123486r (Eba30342)
Edi010---030ia01
81184771 P1 Ban 1004 Cl10 B01
Pump Skk
Elb-222525md01
Bzp056180rd--165r, Sf6/180rd-O
Tfl6/110/Rdg/Lmfv
Bzp053050rd--165r
B2-36r
Pump Te
5ap90l-4, 1420 Rpm
Bz-36r
Tm10-240pddm-Gkgm
6ape80m-4 Ie2 (Ex. 5ap80-4)
Bml2-24rd

Bms2-36rd	
F5958 Size 3(Sf 2/13 Rd-Vlfm)	
Pump Kzt 203	
Sf 2/8 Rd*Vlfm F 5958	
5??80-4s 50/60	
Evk053-Vb01	
95/2764/2 Type Sf2/3r	
Idp050x2v	
Inw63-63	
Asf2/6rd-121942l	
Dp100x2,5v	
Kzt 160-1l	
Sf 2/13 Rd-Vlfm + Motor	Steimel Pump with motor Serial nr. : 1.PU 11 30 91 Motor power : 1,1KW 1440 R/min (pump and motor will be coupled)
Evf92216x100fa01	
Sf2/8rd-O	BZP052008FLE-165R gear pump FKM, 2-20 bar, G 1 / SAE1, noise-optimized -- Gear pump: SF 2/8 RD Article no. : BZP052008FLE-165R -- Dimension sheet: DMB052D-FLE01R Spare parts list: DET052008RD - 165R Suction and pressure connection: G 1 / SAE 1 Material Design: Housing parts: EN-GJL-250 (GG-25) Pinion shafts: 16MnCrS5 helical teeth Gearing: noise-optimized Storage: MD multilayer Shaft seal: Radial shaft seal Elastomers: FKM -- Fluid: Lubricating oil Viscosity: 50-5000 cSt -- Flow rate: 10.9 / 13.1 l / min Pressure: 5 bar -- Speed: 1450/1750 min-1 Pressure relief valve Adjustment range: 2-20 bar Opening pressure: 8 bar Direction of rotation: right Test run: yes, with HLPD46 Painting: primed Nameplate: ETY924-D / E-PE01 with free shaft end
Sf 2-20 Rd	